

GOVERNMENT CORNER RESTORATION FORM

Township 28S Range 5W Sec. 26 County DOUGLAS

State OR Date 8/12/92 No. _____

Corner Designation

S27 | S26
S34 | S35

Condition Report Only
Not Found
 Renewed
Unrecorded
Surveyed In
Referenced Out

Previous Renewals #27, #119, 1988 BLM

Monument(s) Found: (Condition and Source)

MONUMENT DETAIL

3/4" BLM BRASS CAP O.N.A 2 1/2"
O.D. IRON PIPE, PROTRUDES 7"
ABOVE GROUND. (1988 BLM)

U.S. DEPT. OF THE INTERIOR

T28S R5W

2 1/2" DCSO BRASS CAP O.N.A 1 1/2"
O.D. IRON PIPE, PROTRUDES 16"
ABOVE GROUND (REN #119)

S27 | S26

S34 | S35

COUNTY SURVEYORS OFFICE
T28S R5W

1988

BUR. OF LAND MANAGEMENT

S27 | S26

S34 | S35

1961

A 1" X 2 FT LONG IRON BAR FO OUT
OF GROUND ALONG EAST EDGE OF DCSO BC/IP (REN #27)
Accessories Found:

REG. DIST FROM 1988 BLM BC/IP

10" NOW 10" DIA 2 FT HIGH OAK STUMP WITH A CHOPPED OUT
BLAZE, BEAR N 37 1/2° E, 329.7 FT (REN #27) BT WAS TO
ERRONIOUS CORNER POSITION ESTABLISHED BY J. MARKHAM

13" NOW 18" DIA NW TRUNK OF A MULYI TRUNK W. OAK WITH
A FULLY HEALED DOUBLE BLAZE, BEARS N 69 1/2° E, 233.8 FT
TO CENTER OF NW TRUNK (REN #27) BT WAS TO ERRONIOUS CORNER
POSITION ESTABLISHED BY J. MARKHAM
1988 BT TAG " N 61 1/4° E, 352 LKS

12" NOW 24" DIA. D. FIR WITH A FULLY HEALED BLAZE,
BEARS N 86 3/4° W, 267.2 FT (REN #119) BT WAS TO
TO ERRONIOUS CORNER POSITION RENEWED BY DCSO IN 1961.
1988 BT TAG " N 86 3/4° W, 407 LKS "

DCSO BC/IP. FROM REN #119 BEARS N 36 3/4° E, 26.1 FT
(AGREES WELL WITH REG. FROM 1988 BLM SURVEY)

222

158

C

Monument Set (Procedure and Description)

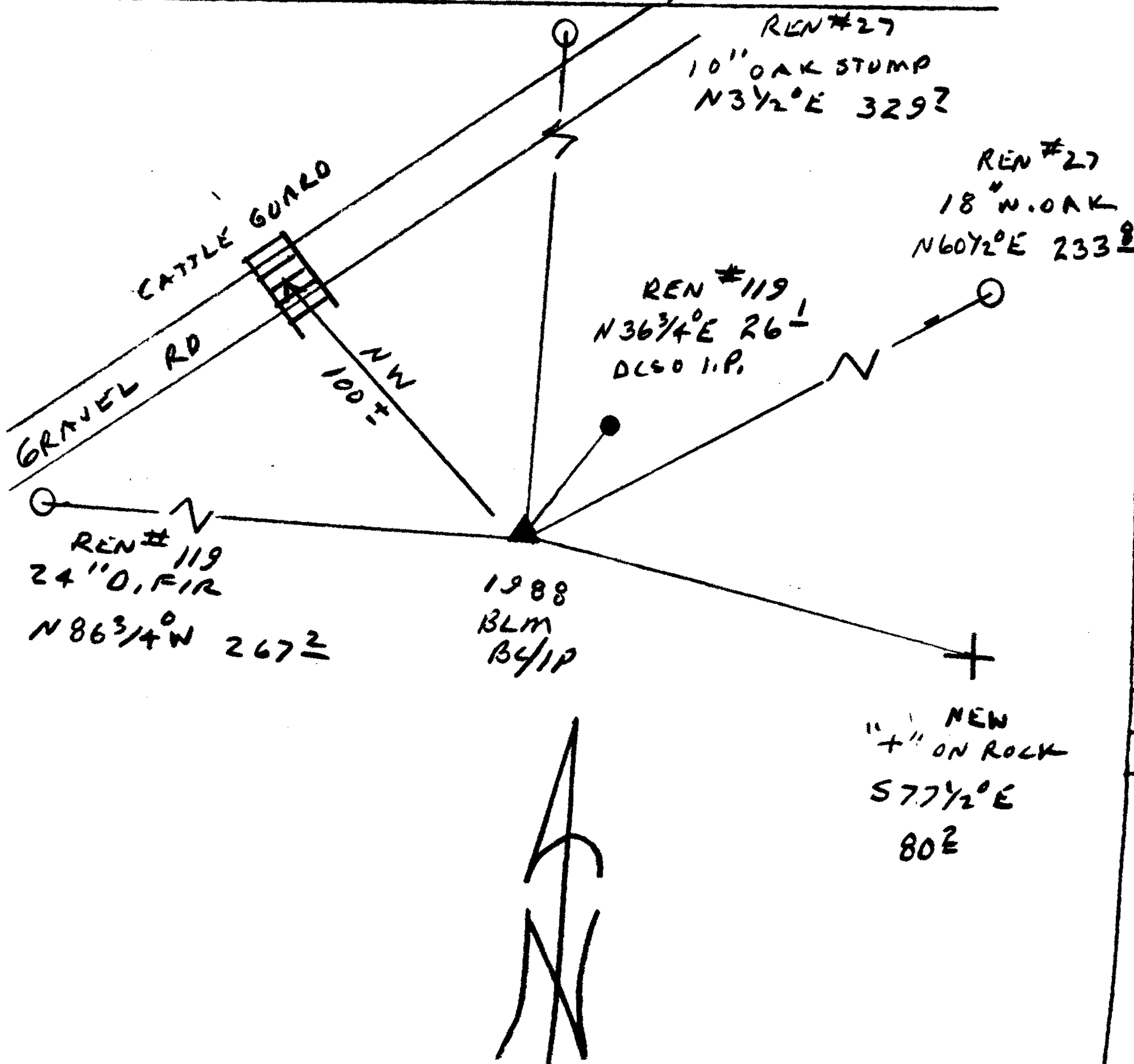
BRASS CAP ON DCSO B41P IS
 SAWED OFF I.P. NOW PROTRUDES 7"
 ABOVE GROUND. YELLOW DCSO PLASTIC
 CAP IS SET ON TOP OF I.P. MARKED
 "DOUG. CO. SURVEYOR".
 POSITION OF CORNER DETERMINED IN
 RENEWAL # 27 AND RENEWED IN
 RENEWAL # 119 IS AT AN ERRONIOUS
 POSITION SEE 1988 BLM D. RESURVEY

N/A

New Accessories

6' X 12' X 2' HIGH ROCK OUTCROP A 3" + IS CHISELED ON FLAT
 SURFACE NEAR NORTHWEST CORNER, + BEARS $S77\frac{1}{2}^{\circ}E$ 80.2 FT.

Sketch of Monument, Accessories, and General Area



Location & Comments

A METAL FENCE POST IS
 SET ALONG NORTH EDGE
 OF BLM B41P

CORNER IS SOUTHEAST
 OF A METAL CATTLE GUARD
 OVER GRAVEL ROAD APPROX.
 100 FT

Comp. Declin. $17\frac{3}{4}^{\circ}E$
 Agency DCSO
 Party Chief RANDALL W SMITH
 Notekeeper Randall W Smith
 Witnesses STEPHEN J FLAUSK

Address

Surveyor's Seal

REGISTERED
 PROFESSIONAL
 LAND SURVEYOR

Randall W Smith

OREGON
 JULY 25, 1990
 RANDALL W. SMITH
 2469