

GOVERNMENT CORNER RESTORATION FORM

FILED

JUL 23 1992

Township 24S Range 9W Sec. 31 County DOUGLAS

State OR Date 7/15/92 No. \_\_\_\_\_

Corner Designation T24-10 T24-9

S 36 | S 31

S 1 | S 6

T25-10 T25-9

COUNTY SURVEYOR  
DOUGLAS COUNTY, ORE.

- \_\_\_\_\_ Condition Report Only
- \_\_\_\_\_ Not Found
- Renewed
- \_\_\_\_\_ Unrecorded
- \_\_\_\_\_ Surveyed In
- \_\_\_\_\_ Referenced Out

MONUMENT DETAIL

Previous Renewals NONE ON REC.

Monument(s) Found: (Condition and Source)

1" O. D. IRON PIPE PROTRUDING  
16" ABOVE GROUND (UNRECORDED)

N/A

Accessories Found:

32" NOW 42" DIA 2 1/2 FT HIGH D. FIR STUMP, NO BLAZES  
OR SCRIBING VISIBLE, BEARS N 67° E, 53.3 FT  
(REC N 67° E 50.8 FT) ORIG BT

24" NOW 30" DIA 2 FT HIGH D. FIR STUMP, NO BLAZES  
OR SCRIBING VISIBLE, BT TAG AND "W" ON STUMP,  
BEARS S 42° E, 22.7 FT (AGREES WITH REC)  
ORIG BT

24" DIA 3 FT HIGH FIR STUMP WITH BT TAG  
AND "W" NAIL IN NOTCH, NAIL BEARS S 19° W,  
20.6 FT (AGREES WITH BT TAG), WC. UNRECORDED REN.

SW AND NW ORIG BT'S GONE

#16 T24-9X  
#14 T25-9X

69/26-19

Monument Set (Procedure and Description)

Monument Detail

NONE

N/A

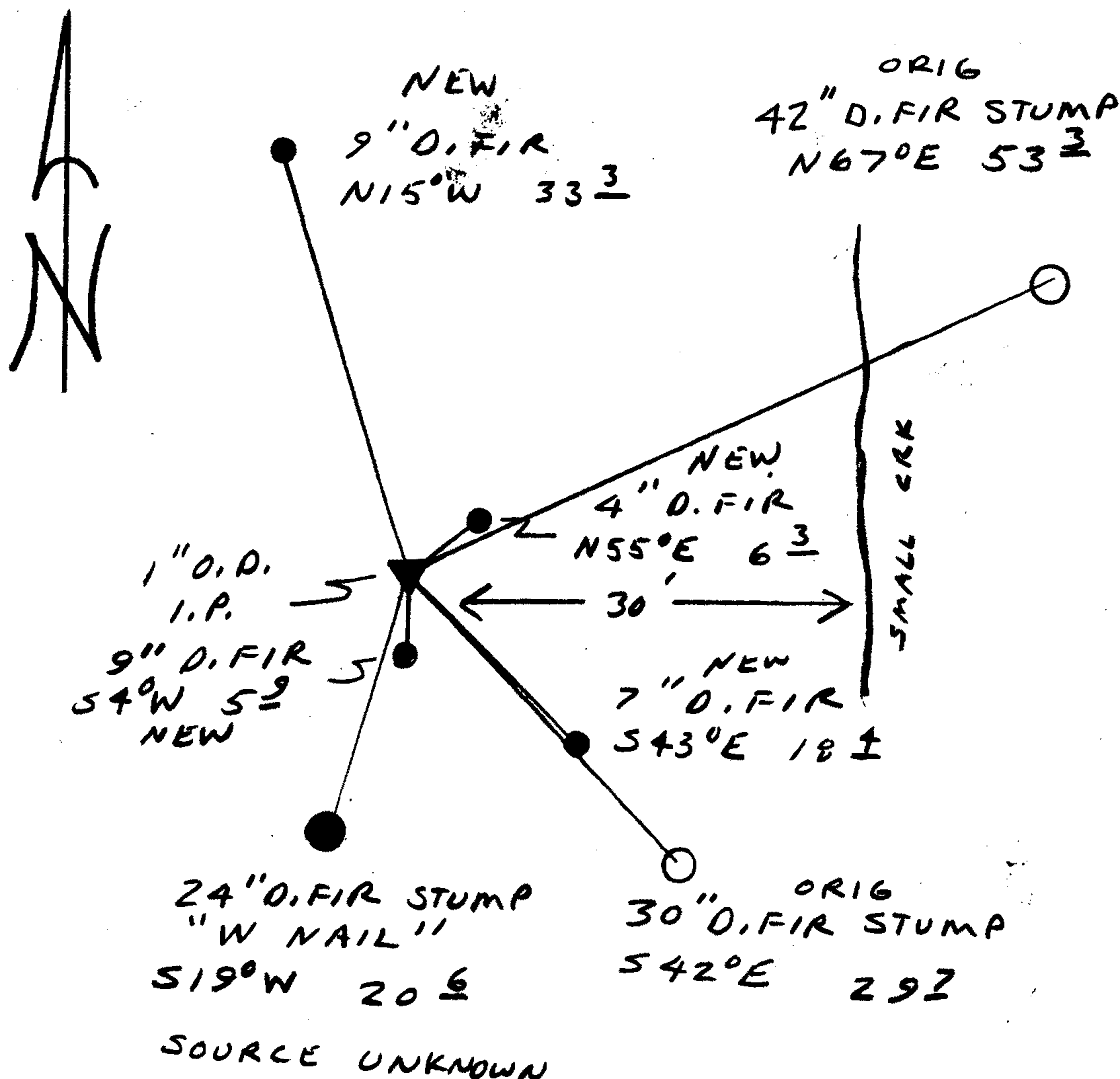
New Accessories

- 4" D.FIR DOUBLE BLAZED AND SCRIBED " X BT" BEARS N55°E, 6.3 FT
- 9" DIA. D.FIR DOUBLE BLAZED AND SCRIBED " T255 R10W S1'CS BT" BEARS S40°W, 5.9 FT.
- 7" DIA D.FIR DOUBLE BLAZED AND SCRIBED " T255 R9W S6 CS BT" BEARS S43°E, 18.4 FT.
- 9" DIA. D.FIR DOUBLE BLAZED AND SCRIBED " T245 R10W S36 CS BT" BEARS N15°W, 33.3 FT.

Sketch of Monument, Accessories, and General Area

Location & Comments

CORNER IS APPROX. 30 FT WEST OF A SMALL CREEK.



Comp. Declin. 18°E  
 Agency DCSO  
 Party Chief RANDALL W. SMITH  
 Notekeeper [Signature]  
 Witnesses STEPHEN J. FLAUSE

Address

Surveyor's Seal

REGISTERED PROFESSIONAL LAND SURVEYOR

*Randall W. Smith*

OREGON  
 JULY 25, 1990  
 RANDALL W. SMITH  
 2459