

Monument Set (Procedure and Description)

Monument Detail

NONE

N/A

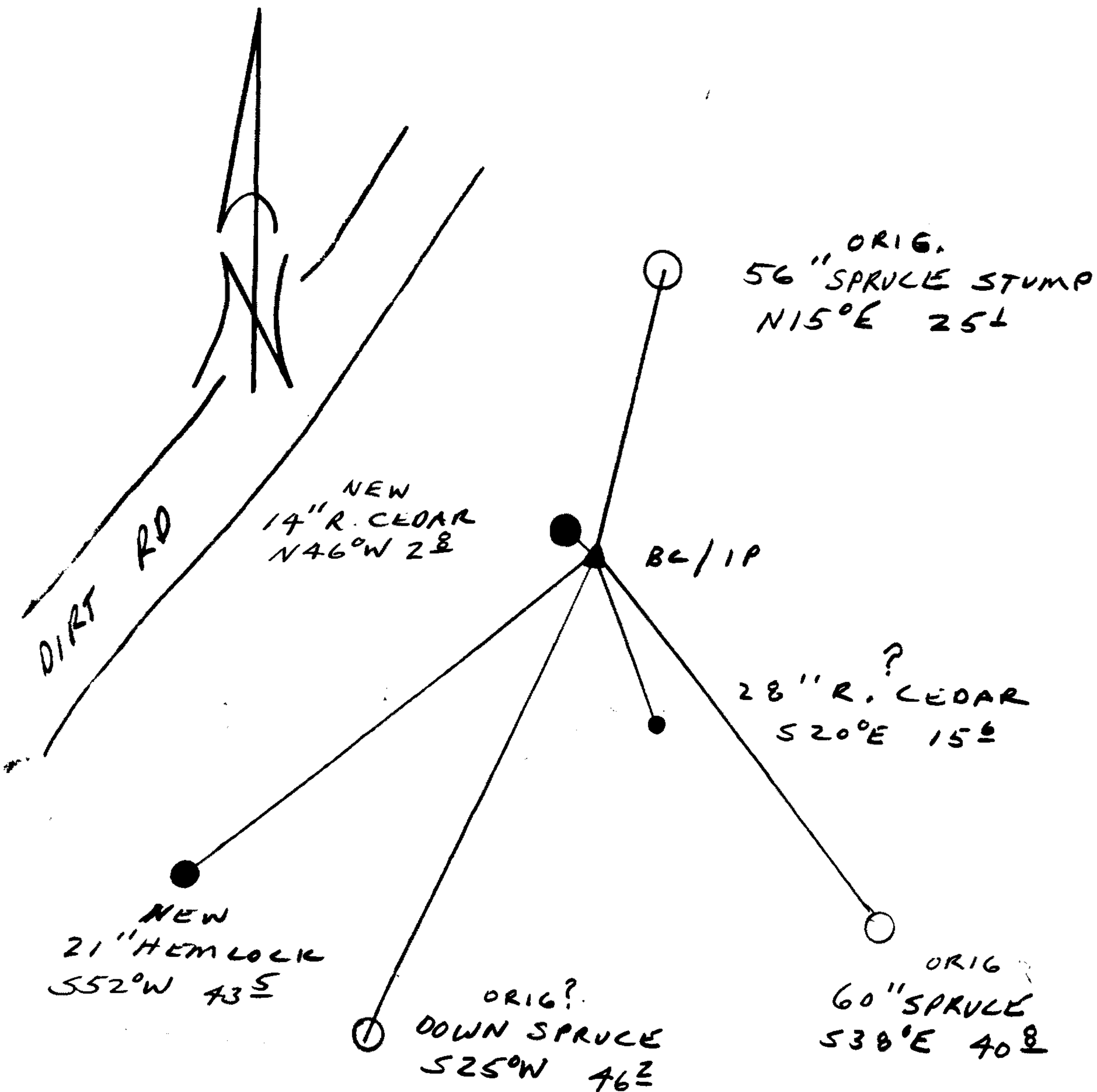
New Accessories

14" DIA. R. CEDAR, DOUBLE BLAZED AND SCRIBED "T205 R12W S24CS BT" BEARS N46°W, 2.8 FT.

21" DIA. HEMLOCK DOUBLE BLAZED AND SCRIBED "T205 R12W S25CS BT" BEARS S52°W, 43.5 FT.

Sketch of Monument, Accessories, and General Area

Location & Comments



Comp. Declin. 18°E
 Agency DLSD
 Party Chief RANDALL W. SMITH
 Notekeeper Randall W. Smith
 Witnesses STEPHEN J. FLAUSE

Address

REGISTRAR'S Seal
 PROFESSIONAL LAND SURVEYOR
Randall W. Smith
 OREGON
 JULY 25, 1990
 RANDALL W. SMITH
 2469