

GOVERNMENT CORNER RESTORATION FORM

FILED JP

Township 26 S Range 2 W Sec. 17 County DOUGLAS

JUN 11 1992

State OR Date 6/8/92 No. _____

Corner Designation

REGISTERED SURVEYOR
C. S. ...

C $\frac{E 1/16}{S 17}$ C

- Condition Report Only
- Not Found
- Renewed
- Unrecorded
- Surveyed In
- Referenced Out

Previous Renewals

MONUMENT DETAIL

Monument(s) Found: (Condition and Source)

3" BLM BRASS CAP ON A 2 1/2" O.D.
 IRON PIPE PROTRUDING 2" ABOVE
 A 2 FT DIA MOUND OF STONE.
 1959 BLM SURVEY

U.S. CADASTRAL SURVEY

C $\frac{E 1/16}{S 17}$ C

1959

BUREAU OF LAND MANAGEMENT

Accessories Found:

11" NOW 16" DIA. D. FIR WITH A FULLY HEALED SINGLE BLAZE,
 BEARS N 80 1/2° W, 22.9 FT (REC N 80 1/2° W 23.8 FT TO CENTER
 OF TRUNK) 1959 SURVEY

11" NOW 17" DIA. 3 FT HIGH D. FIR STUMP WITH A FULLY HEALED
 SINGLE BLAZE, BEARS S 2 1/4° E, 13.2 FT (AGRES WITH REC)
 1959 SURVEY.

REN # 143

C.S. No. 64/26-14

RENEWAL

Monument Set (Procedure and Description)

Monument Detail

NONE

N/A

New Accessories

7" DIA. D. FIR DOUBLE BLAZED AND SCRIBED "CE Y16 S17 CS BT"
BEARS S 46° W, 7.4 FT

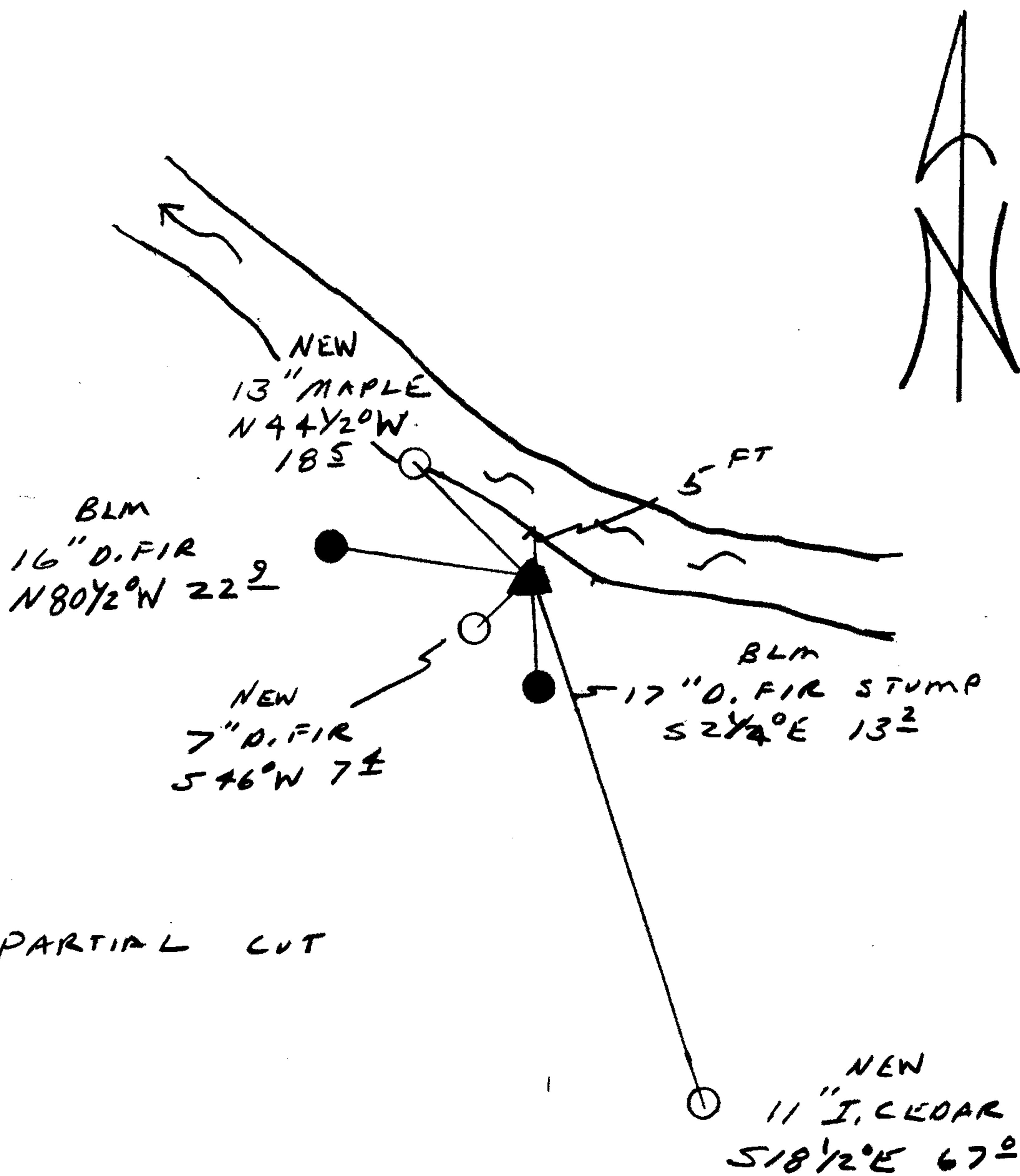
13" DIA MAPLE DOUBLE BLAZED AND SCRIBED "CE Y16 S17 CS BT"
BEARS N 44 1/2° W, 18.5 FT CENTER OF TRUNK

11" DIA J CEDAR DOUBLE BLAZED AND SCRIBED "CE Y16 S17 CS BT"
BEARS S 18 1/2° E, 67.0 FT.

Sketch of Monument, Accessories, and General Area

Location & Comments

CORNER LIES 5 FT
SOUTH OF CREEK BANK



Comp. Declin. 18° E
Agency DCSO
Party Chief RANDALL W SMITH
Notekeeper Randall W Smith
Witnesses STEPHEN J FLAUSE

Address

Surveyor's Seal

REGISTERED
PROFESSIONAL
LAND SURVEYOR

Randall W Smith

OREGON
JULY 25, 1990
RANDALL W. SMITH
2469