

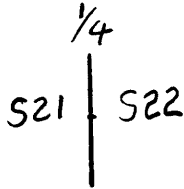
GOVERNMENT CORNER RESTORATION FORM

Township 21S Range 9W Sec. 21 County DOUGLAS

State OREGON Date MAY 20, 1992 No. _____

Corner Designation

FILED



JUN 4 1992

COUNTY SURVEYOR
DOUGLAS COUNTY, ORE.

- _____ Condition Report Only
- _____ Not Found
- Renewed
- _____ Unrecorded
- _____ Surveyed In
- _____ Referenced Out

Previous Renewals RENEWAL # 45

MONUMENT DETAIL

Monument(s) Found: (Condition and Source)

FROM RENEWAL # 45 A
A 2 1/2 INCH DIAMETER BRASS CAP (MARKED AS AT RIGHT) ON A 1 1/2 INCH O.D. IRON PIPE IS FIRMLY SET AND PROTRUDES APPROXIMATELY 3 INCHES ABOVE GROUND. A 1/2 INCH DIAMETER 36 INCH LONG STEEL REBAR POST (WITH YELLOW BOUNDARY SIGN IS LOOSELY SET AT NORTH EDGE OF FOUND BRASS CAP MONUMENT. (SIGN AND POST ARE TEMPORARILY REMOVED FROM MONUMENT VICINITY TO RELIEVE MAGNETIC INFLUENCE ON COMPASS BEARINGS BELOW)

T205 R 9W

1/4

21 | 22

1983

PLS 1039

Accessories Found:

EVIDENCE OF TWO ORIGINAL BEARING TREES FOUND.
A CEDAR, 8 INS. DIAM. NOW A 2 1/2 FOOT TALL 24 INCH DIAMETER ROTTEN CEDAR STUMP WITH NO SCRIBING VISIBLE BEARS N 79° E, 17 1/2 FEET DISTANT (RECORD N 71 1/2° E, 17 1/2 FT DIST.).

A FIR 16 INS. DIAM. NOW A FALLEN AND ROTTEN 18 INCH DIAMETER FIR WITH A PREVIOUSLY OPENED BLAZE SHOWING THE SCRIBING "1/4 S" THE BASE AND ROOT HOLE OF WHICH BEARS N 10° W, 26 1/2 FEET DISTANT AS PER RECORD.

EVIDENCE OF AN ORIGINAL LINE TREE IS ALSO FOUND.
A CEDAR 48 INS. DIAM. NOW A ROTTEN AND BROKEN 42 INCH P.B.H. 20 FT. TALL CEDAR SNAG WITH 2 NOTCHES ON THE NORTH EDGE AND 3 NOTCHES ON THE SOUTH EDGE OF ITS TRUNK, BEARS NORTH, 31 1/2 FEET DISTANT (AS PER RECORD).

EVIDENCE OF TWO BEARING TREES FROM RENEWAL # 45 IS ALSO FOUND. BOTH TREES HAVE BRASS WASHERS IN LOWER BLAZE (SEE REN # 45)
A 29" HEMLOCK NOW A 31 INCH DIAMETER 5 FOOT TALL HEMLOCK STUMP WITH A PARTIALLY HEALED DOUBLE BLAZE REVEALING THE SCRIBING "1/4 S 22 BT" BEARS N 68 1/4° E, 47 1/2 FEET DISTANT (RECORD N 70° E, 47 1/2 FT.)

A 56" CEDAR NOW A 58 INCH P.B.H. CEDAR WITH A PARTIALLY HEALED DOUBLE BLAZE REVEALING THE SCRIBING "E 1/4 S 21" BEARS SOUTH, 12 1/2 FEET DISTANT (RECORD S 6° W, 12 1/2 FT; BEARING TO PLS BRASS WASHER IS S 04° E)

REN # 59
LX

CS. File No. 64/26-11
C

Monument Set (Procedure and Description)

Monument Detail

TOWNSHIP DESIGNATION ON FOUND BRASS CAP SHOULD READ T215 NOT T205. BRASS CAP MARKINGS ARE CHANGED TO READ AS AT RIGHT

T215 R9W

1/4

21 | 22

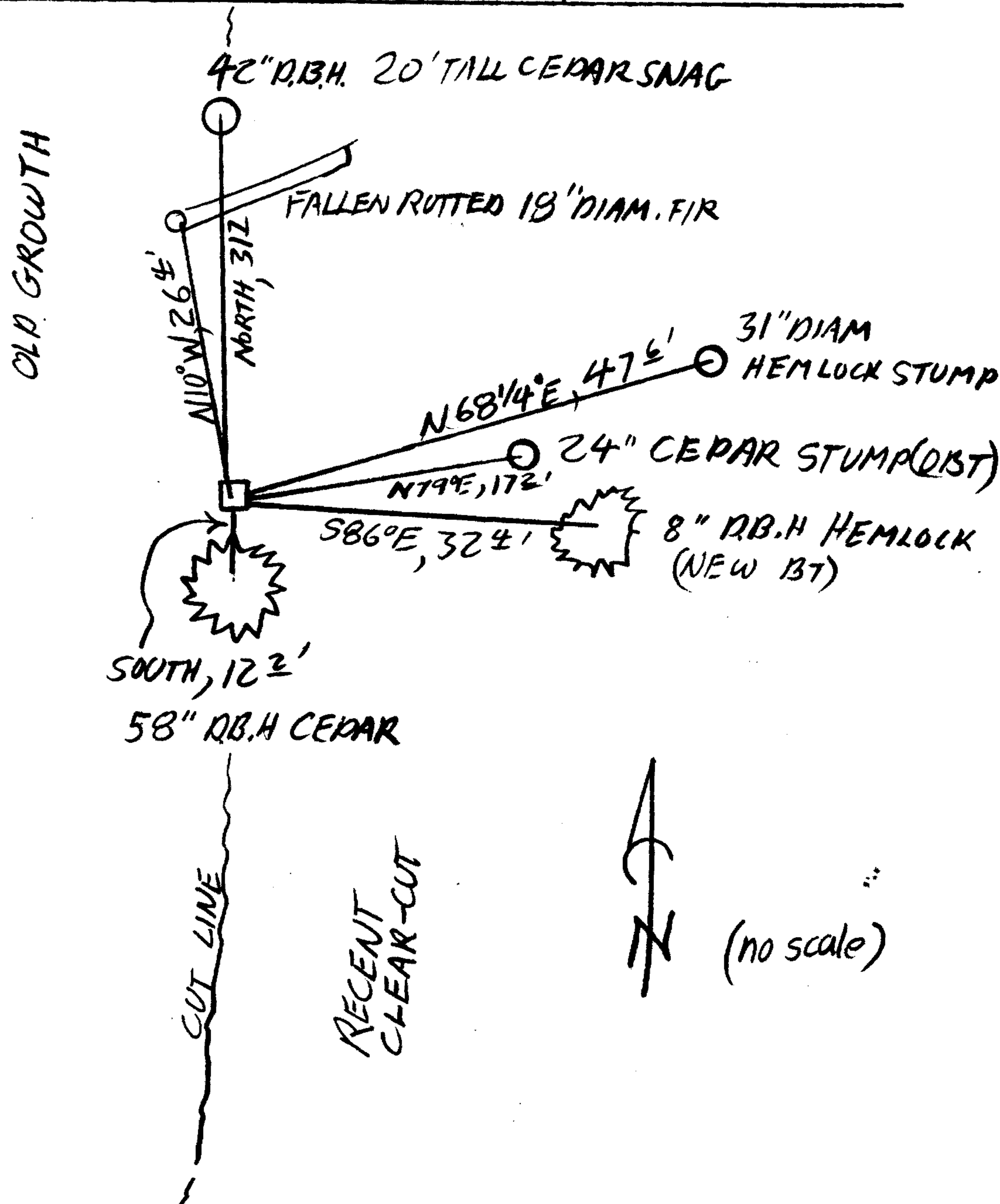
1983

PLS 1039

New Accessories

AN 8 INCH D.B.H. HEMLOCK DOUBLE BLAZEN AND SCRIBED "1/4 S22 CS BT" BEARS S86°E, 32 1/2 FT. DISTANT REBAR AND ATTACHED SIGN ARE RETURNED TO POSITION AT NORTH EDGE OF B.C. MONUMENT.

Sketch of Monument, Accessories, and General Area



Location & Comments

MONUMENT IS ON A NORTH SOUTH CUTTING LINE ON STEEP NNE SLOPE MONUMENT IS APPROXIMATELY 500 FT. WEST-ERLY FROM A LOGGING RD. RUNNING IN A NORTHERLY DIRECTION.

Comp. Declin. 18°E
Agency DCSO
Party Chief R.W. SMITH
Notekeeper Stephen John House
Witnesses J. PIKE

Address

REGISTERED Surveyor's Seal
PROFESSIONAL LAND SURVEYOR

Randall W. Smith
OREGON
JULY 25, 1990
RANDALL W. SMITH
2469