

Township 215 Range 7W Sec. 14 County DOUGLAS

State OR Date 4/14/92 No. _____

APR 15 1992

Corner Designation

S15 | S14
S22 | S23

COUNTY SURVEYOR
DOUGLAS COUNTY, ORE.

- Condition Report Only
- Not Found
- Renewed
- Unrecorded
- Surveyed In
- Referenced Out

Previous Renewals #7 #87

Monument(s) Found: (Condition and Source)

A 2 1/2" DIA DCSO BRASS CAP
ON A 1 1/2" O.D. IRON PIPE
PROTRUDING 13" ABOVE GROUND,
REN #87

HAINES "T" IRON PROTRUDES 17"
ABOVE GROUND, REN #7
"T" IRON BEARS S25°E, 2.0 FT.
FROM DCSO BC/IP, CAGREES
WITH REC).

Accessories Found:

BBG'S DIST FROM DCSO BC/IP

20" NOW 36" 10 FT HIGH D. FIR STUMP WITH GAL. CAP
ON TOP. NO SCRIBING VISIBLE IN A PREVIOUSLY OPENED BLAZE,
BT BEARS N25°W 18.5 FT (REC. N25°W 19.8 FT)
ORIG. BT.

24" NOW 26" DIA 7 FT HIGH D. FIR STUMP WITH A FULLY
HEALED DOUBLE BLAZE, BEARS N81°W, 12.7 FT
(CAGREES WITH REC.) #87

30" NOW 36" D. FIR WITH A FULLY HEALED DOUBLE BLAZE,
BEARS S78°E, 32.2 FT CAGREES WITH REC) #87

10" NOW 15" DIA. HEMLOCK WITH A FULLY HEALED
DOUBLE BLAZE, BEARS N58°E, 13.4 FT (REC N62°E
13.4 FT ERROR IN COMPASS READING) #87

COUNTY SURVEYORS OFFICE

T 215

S15 | S14
S22 | S23

R 7W

1987

#119 X

C

Monument Set (Procedure and Description)

Monument Detail

NONE

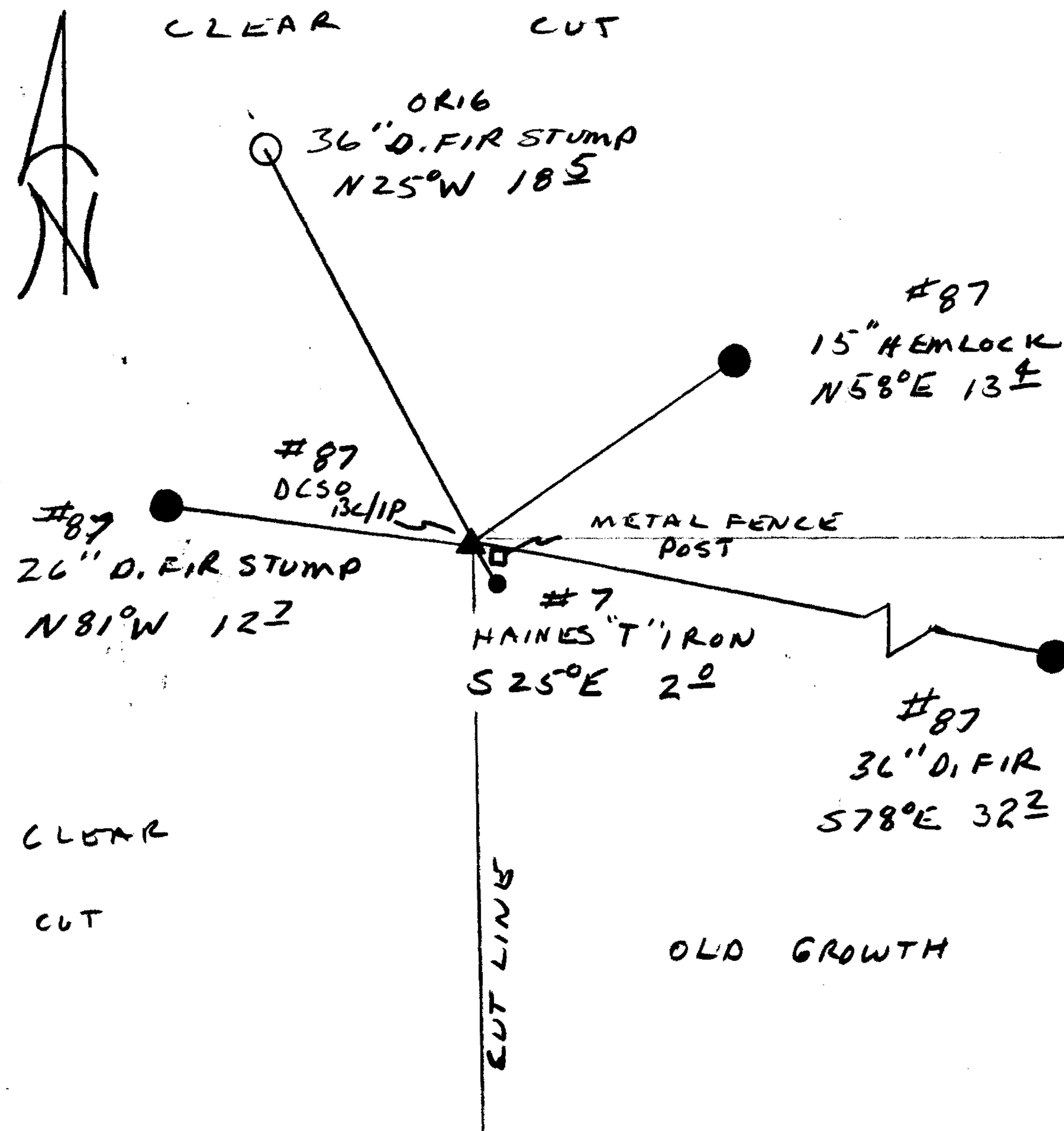
N/A

New Accessories

NONE NO TREES TO THE WEST
STUMP ARE IN GOOD SHAPE

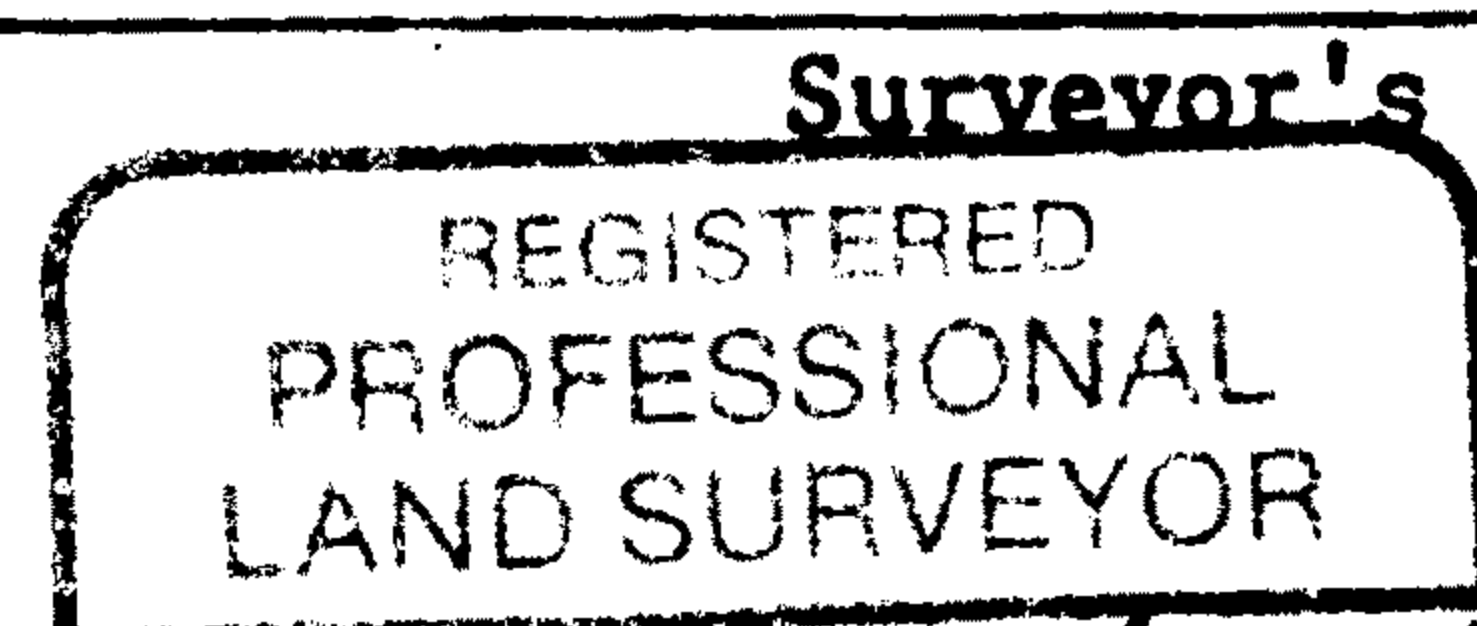
Sketch of Monument, Accessories, and General Area

Location & Comments



Comp. Declin. 18°E
 Agency DCSO
 Party Chief RANDALL W. SMITH
 Notekeeper Randall W. Smith
 Witnesses _____

Address



Randall W. Smith

