

GOVERNMENT CORNER RESTORATION FORM

FILED

zh

Township 30S Range 5W Sec. 21 County DOUGLAS

MAR 18 1992

State OR Date 3/16/92 No. \_\_\_\_\_

COUNTY SURVEYOR  
DOUGLAS COUNTY, ORE.

Corner Designation

DLC  
51

- Condition Report Only
- Not Found
- Renewed
- Unrecorded
- Surveyed In
- Referenced Out

Previous Renewals #44 #108 #267

MONUMENT DETAIL

Monument(s) Found: (Condition and Source)

1" I.D. IRON PIPE 1" BELOW  
GROUND IN GRAVEL TURN OUT. #44

DCSO 2 1/2" DIA. DCSO BRASS  
CAP ON A 1 1/4" O.D. IRON PIPE,  
PROTRUDING 3" ABOVE GROUND,  
REN #267

DOUGLAS CO. SURVEYOR  
T30S R5W  
WITNESS COR.  
NW  
COR.

N47°15'24"E DLC  
51

XXXXXXXXXX 60.26 FT.  
TO TRUE COR.  
1976

Accessories Found:

BRGS + DIST. TAKEN FROM COR. I.P.  
TO "NOW 46" DIA B.OAK WITH A FULLY HEALED DOUBLE  
BLAZE, BEARS N 54 1/2° W, 125.4 FT (AGREE'S WITH REC) #44

DCSO B.I.P WITH COR, BEARS S 47 1/4° W, 60.26 FT  
(AGREE'S WITH REC) #267

3234

RENEWAL

Monument Set (Procedure and Description)

Monument Detail

NONE

N/A

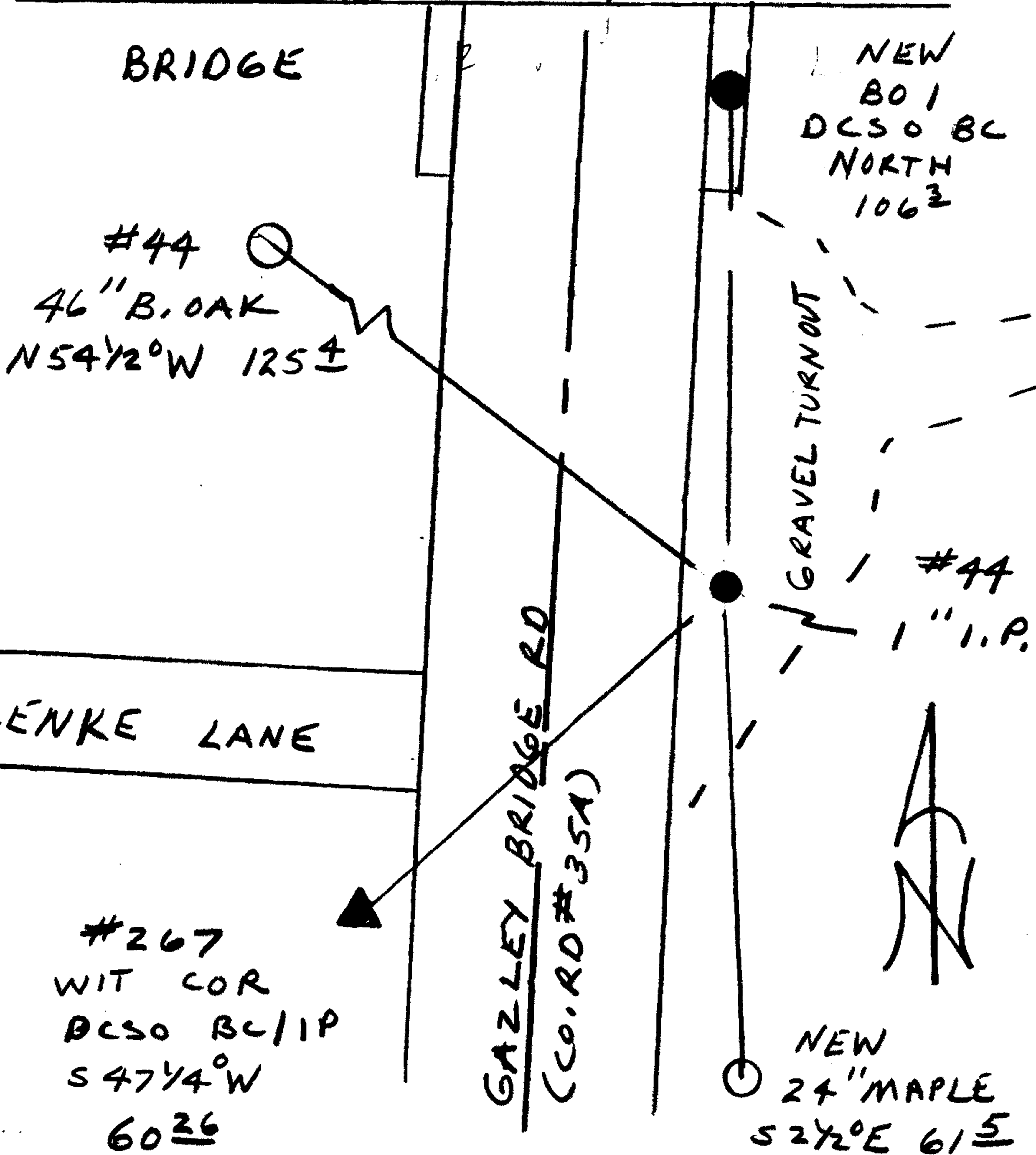
New Accessories

3" DIA DCSO DRILL CAP IN SE COR OF CONCRETE BRIDGE,  
STAMPED "B01 1992", BEARS NORTH, 106.3 FT

24" DIA. MAPLE DOUBLE BLAZED AND SCRIBED "NW DLCS BC BT"  
BEARS S 2 1/2° E, 61.5 FT

Sketch of Monument, Accessories, and General Area

Location & Comments



Comp. Declin. 18° E  
 Agency DCS  
 Party Chief RANDALL W SMITH  
 Notekeeper Randall W Smith  
 Witnesses STEPHEN J FLAUSE

Address \_\_\_\_\_

Surveyor's Seal

REGISTERED  
PROFESSIONAL  
LAND SURVEYOR

*Randall W Smith*

OREGON  
JULY 25, 1990  
RANDALL W. SMITH  
2469