

Township 22S Range 11W Sec. 36 County DOUGLAS

State OR Date 3/3/92 No. \_\_\_\_\_

MAR 18 1992

Corner Designation

1/4 36 \*  
ONLY

COUNTY SURVEYOR  
DOUGLAS COUNTY, ORE.

- Condition Report Only
- Not Found
- Renewed
- Unrecorded
- Surveyed In
- Referenced Out

Previous Renewals (#58 T22-10) (#117 T22-11)

Monument(s) Found: (Condition and Source)

3" OSBF BRASS CAP ON A  
IRON PIPE FOUND 5" BELOW  
GROUND. #58

OREGON STATE BOARD

1/4 S36 |

1971  
OF FORESTRY 359

Accessories Found:

ORIG NE RT IS GONE

39" NOW 36" DIA. 1 1/2' HIGH D. FIR STUMP WITH A  
FULLY HEALED SINGLE BLAZE, BEARS N53°W, 31.7 FT  
(REC N53°W 31.0 FT. DIST. IS A FACE MEASUREMENT) #58

32" NOW 36" DIA 5' HIGH D. FIR STUMP WITH A  
FULLY HEALED SINGLE BLAZE, BEARS S54 1/2°W  
87.8 FT (REC S54 1/2°W 86.8 FT DIST IS A FACE  
MEASUREMENT) #58

#174 T22-11 \*

#113 T22-10 \*

C.S. File No. 64/24-8

C

RENEWAL

Monument Set (Procedure and Description)

Monument Detail

NONE

N/A

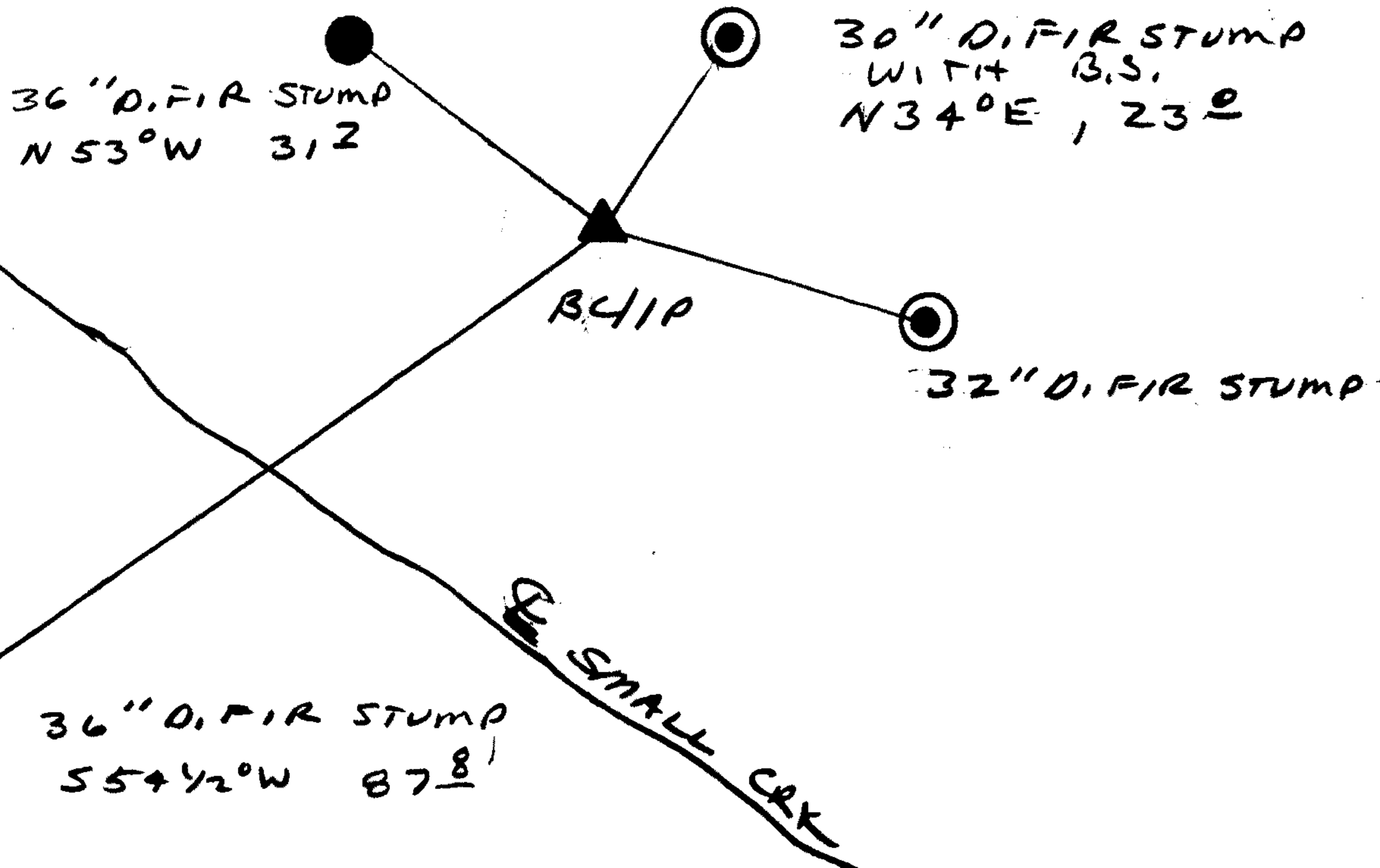
New Accessories

30" DIA 4 FT HIGH D. FIR STUMP WITH BOAT SPIKE THROUGH BT TAG SET ON TOP OF STUMP NEAR CENTER, BS STAMPED "B01". BS BEARS N34°E, 23.0 FT.

32" DIA 5 FT HIGH D. FIR STUMP WITH BOAT SPIKE THROUGH BT TAG SET ON TOP OF STUMP NEAR CENTER, BS STAMPED "B02". BS BEARS S74°E, 32.0 FT.

Sketch of Monument, Accessories, and General Area

Location & Comments



Comp. Declin. 18°E  
Agency DCSO  
Party Chief RANDALL W SMITH  
Notekeeper Randall W Smith  
Witnesses STEPHEN J FLAUSE

Address

Surveyor's Seal

REGISTERED PROFESSIONAL LAND SURVEYOR

Randall W Smith

OREGON  
JULY 25, 1990  
RANDALL W. SMITH  
2469