

GOVERNMENT CORNER RESTORATION FORM

FILED

vh

Township 22S Range 6W Sec. 33 County DOUGLAS

MAR 18 1992

State OR Date 2/18/92 No. _____

COUNTY SURVEYOR
DOUGLAS COUNTY, ORE

Corner Designation

533 / 534
54

- Condition Report Only
- Not Found
- Renewed
- Unrecorded
- Surveyed In
- Referenced Out

Previous Renewals 1955 BLM

Monument(s) Found: (Condition and Source)

"A 2" DIA. G.L.O. BRASS CAP ON
A 1 1/2" O.D. IRON PIPE, FLUSH
WITH GROUND (1955 BLM)

U.S. GENERAL LAND OFFICE

T22S R6W

C / C
533 / 534

54
T23S R6W

1955
SURVEY

Accessories Found:

6" NOW 18" DIA D.FIR WITH A FULLY HEALED SINGLE
BLAZE, BEARS N67°W, 23.8 FT (AGREES WITH REC.) 1955 BLM

7" NOW 19" DIA D.FIR WITH A FULLY HEALED SINGLE
BLAZE, BEARS N33°E, 16.5 FT (AGREES WITH REC.) 1955 BLM

NO EVIDENCE REMAINING OF ORIGINAL NORTHEAST BT

36" NOW ~~DOWN~~ DOWN AND ROTTING D.FIR OF INDETERMINABLE
SIZE, NO BLAZES OR SCRIBING VISIBLE, POSSIBLE ROOT
HOLE BEARS N83°W, 66.0 FT (AGREES WITH BLM REC)
ORIG. BT

#143 T22-6 ✓

#94 T23-6 ✓

C.S. File No. 64/27-6 C

Monument Set (Procedure and Description)

NONE

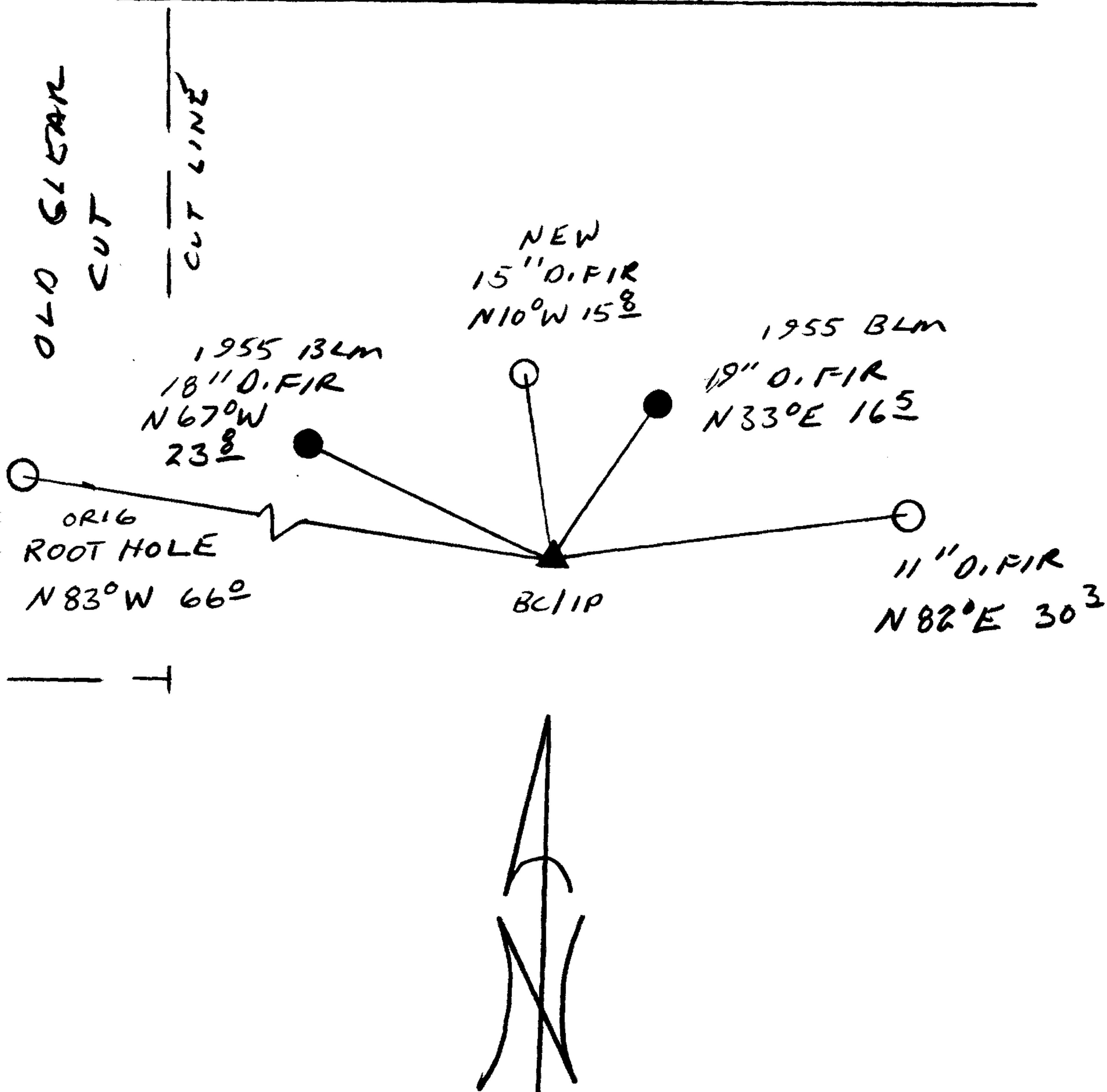
N/A

New Accessories

15" DIA. D.FIR DOUBLE BLAZED AND SCRIBED "TZZS R6W CC S 33 CS BT" BEARS N 10° W, 15.8 FT.

11" DIA. D.FIR DOUBLE BLAZED AND SCRIBED "TZZS R6W CC S 34 CS BT" BEARS N 82° E, 30.3 FT.

Sketch of Monument, Accessories, and General Area



Location & Comments

CORNER IS APPROX. 30 FT EAST OF A WEST AND NORTH RUNNING CUT LINE CORNER.

Comp. Declin. 18° E
Agency DCSO
Party Chief RANDALL W. SMITH
Notekeeper Randall W. Smith
Witnesses STEPHEN J. FRAUSE

Address

Surveyor's Seal

REGISTERED PROFESSIONAL LAND SURVEYOR

Randall W. Smith

OREGON
JULY 25, 1990
RANDALL W. SMITH
2468