

GOVERNMENT CORNER RESTORATION FORM

FILED

Township 22S Range 6W Sec. 8 County DOUGLAS

State OREGON Date FEB. 25 1992 No. _____

MAR 18 1992

Corner Designation

COUNTY SURVEYOR
DOUGLAS COUNTY, ORE.

- Condition Report Only
- Not Found
- Renewed
- Unrecorded
- Surveyed In
- Referenced Out

Previous Renewals 1976 BLM DEPENDENT RESURVEY

MONUMENT DETAIL

Monument(s) Found: (Condition and Source)

FROM BLM DEPENDENT RESURVEY
 A 3 1/4 INCH DIAM. BRASS CAP, MARKED AS
 AT RIGHT, ON A 2 1/2 INCH DIAM. IRON PIPE
 FIRMLY SET AND PROTRUDING APPROX.
 3 INCHES ABOVE GROUND.

U.S. DEPT OF THE INTERIOR

1/4 58
517

T22S R6W

1976

BUREAU OF LAND MANAGEMENT

Accessories Found:

FROM BLM DEPENDENT RESURVEY A REFERENCE MONUMENT AND
 A BEARING TREE ARE FOUND.
 A 2 1/2 INCH DIAMETER IRON PIPE WITH 3 1/4 INCH DIAMETER
 BRASS CAP, STAMPED " 1/4 58 RM 1976 " ALSO STAMPED
 WITH AN ARROW POINTING SOUTHWESTERLY TOWARD CORNER POSITION,
 IS FIRMLY SET AND PROTRUDES 4 INCHES ABOVE GROUND. THIS
 "REFERENCE MONUMENT" BEARS N 6 1/2 ° E, 104 2 FT. DISTANT (RECORD
 N 3 1/4 ° E 104 2 FT.).
 A REDWOOD, 26 IN. DIAM. NOW A 41 INCH D.B.H. COAST REDWOOD
 WITH A FULLY HEALED DOUBLE BLAZE BEARS S 51 1/2 ° W 67 3 FT. DISTANT
 (RECORD S 48 ° W 67 3 FT.)

#164x

C.S. File No. 6429-4

C

RENEWAL

Monument Set (Procedure and Description)

Monument Detail

N/A

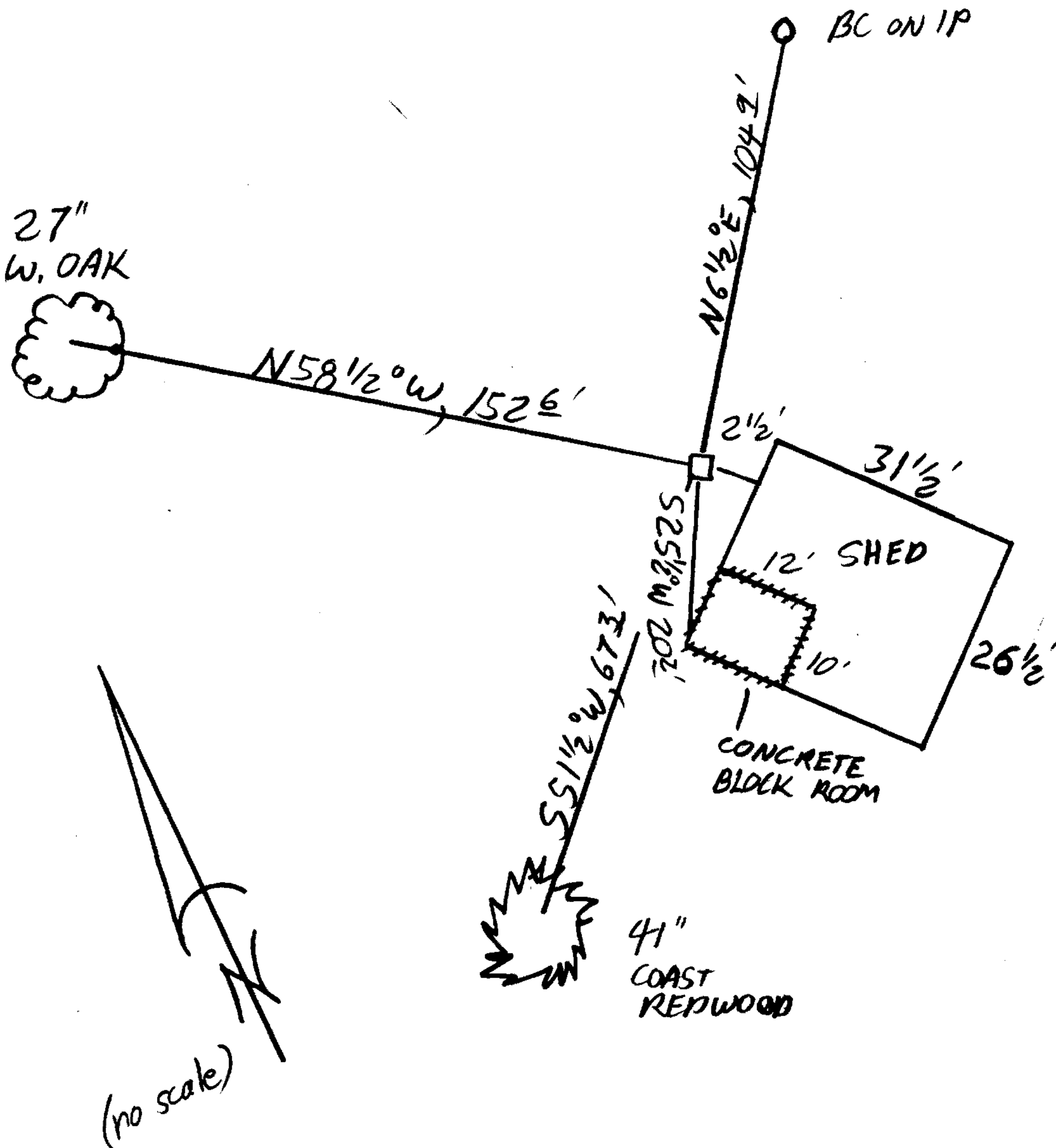
N/A

New Accessories

THE SOUTHWEST CONCRETE BLOCK CORNER OF STORAGE SHED BEARS S25 1/2° W, 20 2/3 FT. DISTANT.

A 27 INCH D.B.H. WHITE OAK SCRIBED 1/4 S 8 CS 1ST ON A DOUBLE BLAZE BEARS N58 1/2° W 152 6/8 FT. DISTANT.

Sketch of Monument, Accessories, and General Area



Location & Comments

MONUMENT IS AT ENTRANCE TO PRIVATE TREE AND SHRUB NURSERY. NURSERY LIES SOUTH ACROSS COVERED BRIDGE.

Comp. Declin. 18° E

Agency DCSO

Party Chief SJ FLAISE

Notekeeper Stephen John Flaese

Witnesses

Address

Surveyor's Seal

REGISTERED
PROFESSIONAL
LAND SURVEYOR

Larry E. Monrean

OREGON
JULY 13, 1979
LARRY E. MONREAN
#1830