

GOVERNMENT CORNER RESTORATION FORM

FILED

TH

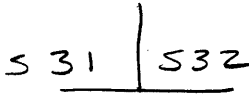
Township 22S Range 7W Sec. 31 County DOUGLAS

FEB 20 1992

State OR Date 2/12/92 No. _____

Corner Designation

COUNTY SURVEYOR
DOUGLAS COUNTY, ORE.



- Condition Report Only
- Not Found
- Renewed
- Unrecorded
- Surveyed In
- Referenced Out

Previous Renewals #46 #117 (#101 T23-7)

MONUMENT DETAIL

Monument(s) Found: (Condition and Source)

A SANDSTONE ROCK MARKED
 "SG" ON SOUTH FACE, STONE
 PROTRUDES 9" ABOVE GROUND, TOP
 MEASURES 10" X 4" (REN #46)

N/A

Accessories Found:

15" NOW 34" DIA. D. FIR WITH A FULLY HEALED SINGLE BLAZE,
 BEARS N36°W, 96.2 FT (AGREES WITH REC.) REN #117

29" NOW 20" DIA DOWN AND ROTTED OAK STUMP, NO
 BLAZES OR SCRIBING VISIBLE, BEARS N14°E 248.5 FT
 TO ROOT HOLE (AGREES WITH REC.) REN #46

NO OTHER BT'S FD

#178 T23-7 ✓
 #198 T22-7 ✓

RENEWAL

Monument Set (Procedure and Description)

Monument Detail

BRASS CAP NOT SET, STONE
 IS SOLID AND IN GOOD SHAPE

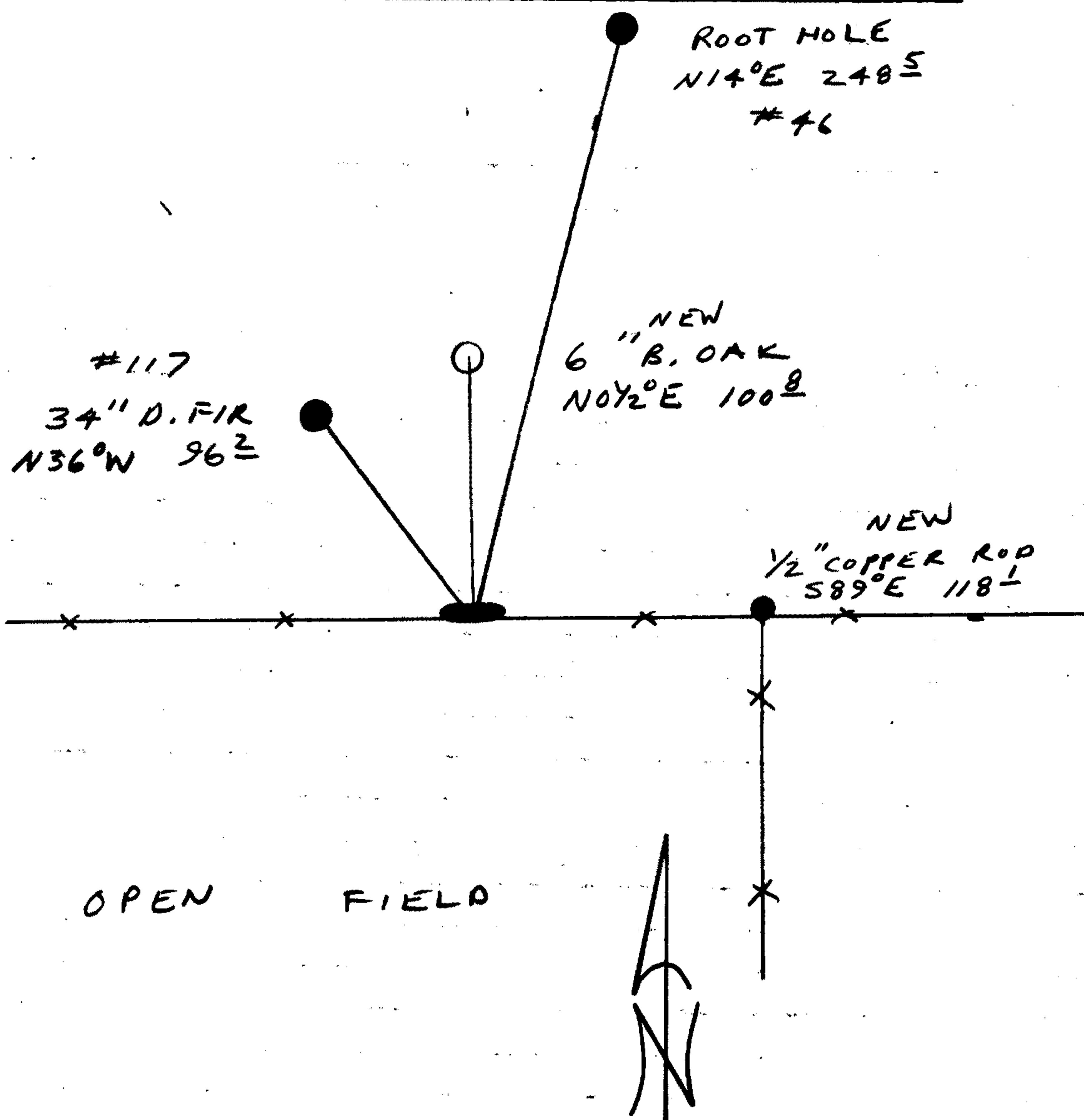
N/A

New Accessories

6" DIA. B. OAK DOUBLE BLAZED AND SCRIBED "TZZS RTW S32CS BT
 BEARS N0 1/2° E, 100.8 FT

1/2" COPPER ROD AT INTERSECTION OF EAST-WEST AND SOUTH RUNNING
 FENCE LINES BEARS S89° E, 118.1 FT

Sketch of Monument, Accessories, and General Area



Location & Comments

CORNER LIES 0.15 FT NORTH
 OF AN EAST-WEST
 FENCE LINE. APPROX
 100 FT WEST OF CREST
 OVER ROLLING HILL.

Comp. Declin. 18° E
 Agency DCSO
 Party Chief RANDALL W. SMITH
 Notekeeper Randall W. Smith
 Witnesses STEPHEN J. FRAUSE

Address

Surveyor's Seal
 REGISTERED
 PROFESSIONAL
 LAND SURVEYOR

Randall W. Smith

OREGON
 JULY 25, 1990
 RANDALL W. SMITH
 2469