

GOVERNMENT CORNER RESTORATION FORM

FILED

JK

Township 23S Range 7W Sec. 14 County DOUGLAS

FEB 13 1992

State OR Date 2/10/92 No. _____

Corner Designation

COUNTY SURVEYOR
DOUGLAS COUNTY, ORE.

S 15 | S 14
S 22 | S 23

- Condition Report Only
- Not Found
- Renewed
- Unrecorded
- Surveyed In
- Referenced Out

Previous Renewals #58 1961 BLM

Monument(s) Found: (Condition and Source)

3/4" DIA. BLM BRASS CAP ON A
2 1/2" O.D. IRON PIPE, PROTRUDING
6" ABOVE GROUND. (1961 BLM)

2 1/2" DIA. BRASS CAP ON A 1/4" O.D.
IRON PIPE, PROTRUDING 6" ABOVE
GROUND, IS LOCATED ALONG THE
WEST EDGE OF BLM BC/IP
(UNRECORDED SURVEY BY JOHN PHILLIPS)

1" T IRON PROTRUDES 12" ABOVE
GROUND SET BY WILFORD HAINES
IN REN #58 BEARS N 57° E,
8.3 FT FROM BLM BC/IP.

U.S. DEPT. OF THE INTERIOR
T 23S R 7W

S 15 | S 14
S 22 | S 23

1961

BUR. OF LAND MANAGEMENT

LS 307

BLM T 23S

S 15 | S 14
S 22 | S 23

1957

R 7W

Accessories Found:

24" NOW 30" DIA. B. OAK DOWN AND ROTTED B. OAK
NO BLAZES OR SCRIBING VISIBLE, ROOT HOLE BEARS
N 33° W, 75.2 FT. (AGREES WITH REC.) ORIG. RT

6" NOW 13" DIA. B. OAK WITH A FULLY HEALED SINGLE BLAZE,
BEARS N 36 1/2° E, 11.7 FT (BLM REC. N 21° E 12.5 FT) REN #58

16" NOW 31" DIA. D. FIR WITH A FULLY HEALED SINGLE BLAZE,
BEARS S 24° E, 89.8 FT (REC. S 39° E, 89.8 FT) 1961 BLM

10" NOW DOUBLE TRUNKED B. OAK WITH A FULLY HEALED
SINGLE BLAZE ON 22" EAST TRUNK, ROOT CROWN BEARS
S 68 3/4° W, 85.8 FT (REC. S 53° W, 85.8 FT) 1961 BLM

NOTE: A CONSISTANT BEARING ROTATION ON RENEWAL
TREES. I THINK TIE TO ORIGIN BT AND
HAINES T IRON WAS DONE WITH A DIFFERENT
INSTRUMENT THAN ONE USED IN TIEING RENEWAL
TREES

#176 X

Monument Set (Procedure and Description)

Monument Detail

NONE

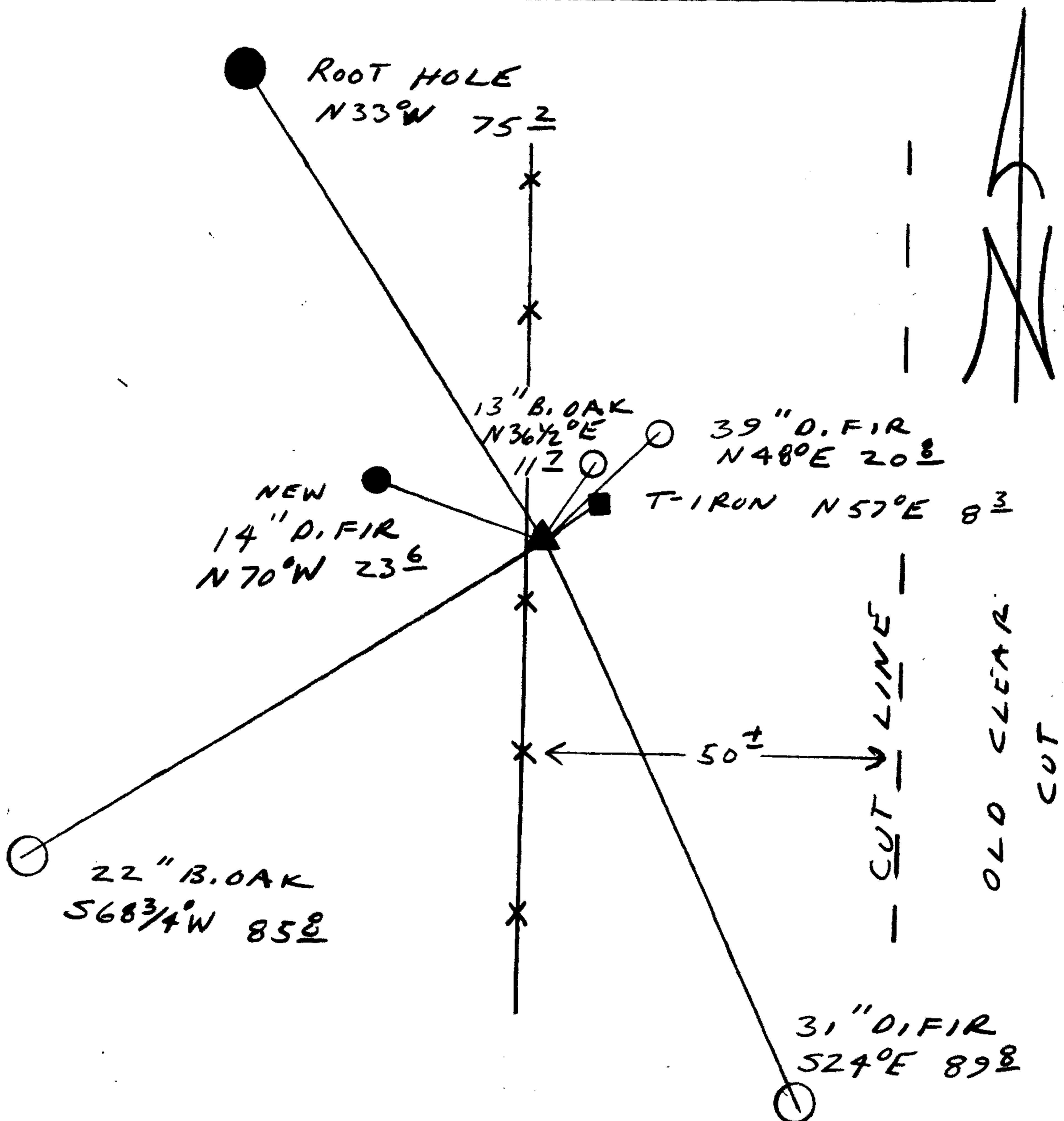
N/A

New Accessories

20" NOW 39" DIA D. FIR WITH A FULLY HEALED SINGLE BLAZE, BEARS N48°E, 20.8 FT (BT FROM REN# 58 NOT TIED TO BC/IP IN 1961)

A 14" DBH D. FIR SCRIBED "T235 R74/SIS LS BT" ON A DOUBLE BLAZE (UPPER BLAZE BEARS FROM BOTTOM TO TOP) BEARS N70°W, 23.6 FT. DIST.

Sketch of Monument, Accessories, and General Area



Location & Comments

A NORTH-SOUTH FENCE LINE IS 1 FT WEST OF BLM BC/IP

Comp. Declin. 19°E
 Agency DSSO
 Party Chief RANDALL W. SMITH
 Notekeeper Randall W. Smith
 Witnesses STEPHEN J. FLAUSE
TERRIE FRANSEN

Address

Surveyor's Seal

REGISTERED PROFESSIONAL LAND SURVEYOR

Randall W. Smith

OREGON
 JULY 25, 1990
 RANDALL W. SMITH
 2469