

GOVERNMENT CORNER RESTORATION FORM

FILED

JK

Township 22S Range 5W Sec. 24 County DOUGLAS

FEB 13 1992

State OR Date 2/7/92

No. _____

COUNTY SURVEYOR
DOUGLAS COUNTY, ORE.

Corner Designation

E 1/16 S 24
 S 25

- Condition Report Only
- Not Found
- Renewed
- Unrecorded
- Surveyed In
- Referenced Out

Previous Renewals 1973 BLM

MONUMENT DETAIL

Monument(s) Found: (Condition and Source)

A 3/4" DIA BRASS CAP / IRON PIPE
SURROUNDED BY A 12 FT X 8 FT
MASS OF CONCRETE, (1973 BLM)

U.S. DEPT OF THE INTERIOR

E 1/16 S 24
 S 25

1973

BE/ IP HAD BEEN HIT BY FARM
EQUIPMENT, FLANGES HELD, MR HEISE
PLUMBED BE/ IP AND SURROUNDED BE/ IP
WITH CONCRETE FOR PROTECTION, NO
COLLABORATING EVIDENCE FROM 1973 BLM.

BUR. OF LAND MANAGEMENT

Accessories Found:

BT'S FROM 1973 BLM SURVEY HAVE BEEN CUT DOWN
NO EVIDENCE REMAINS.

#196 x

Monument Set (Procedure and Description)

Monument Detail

NONE

N/A

New Accessories

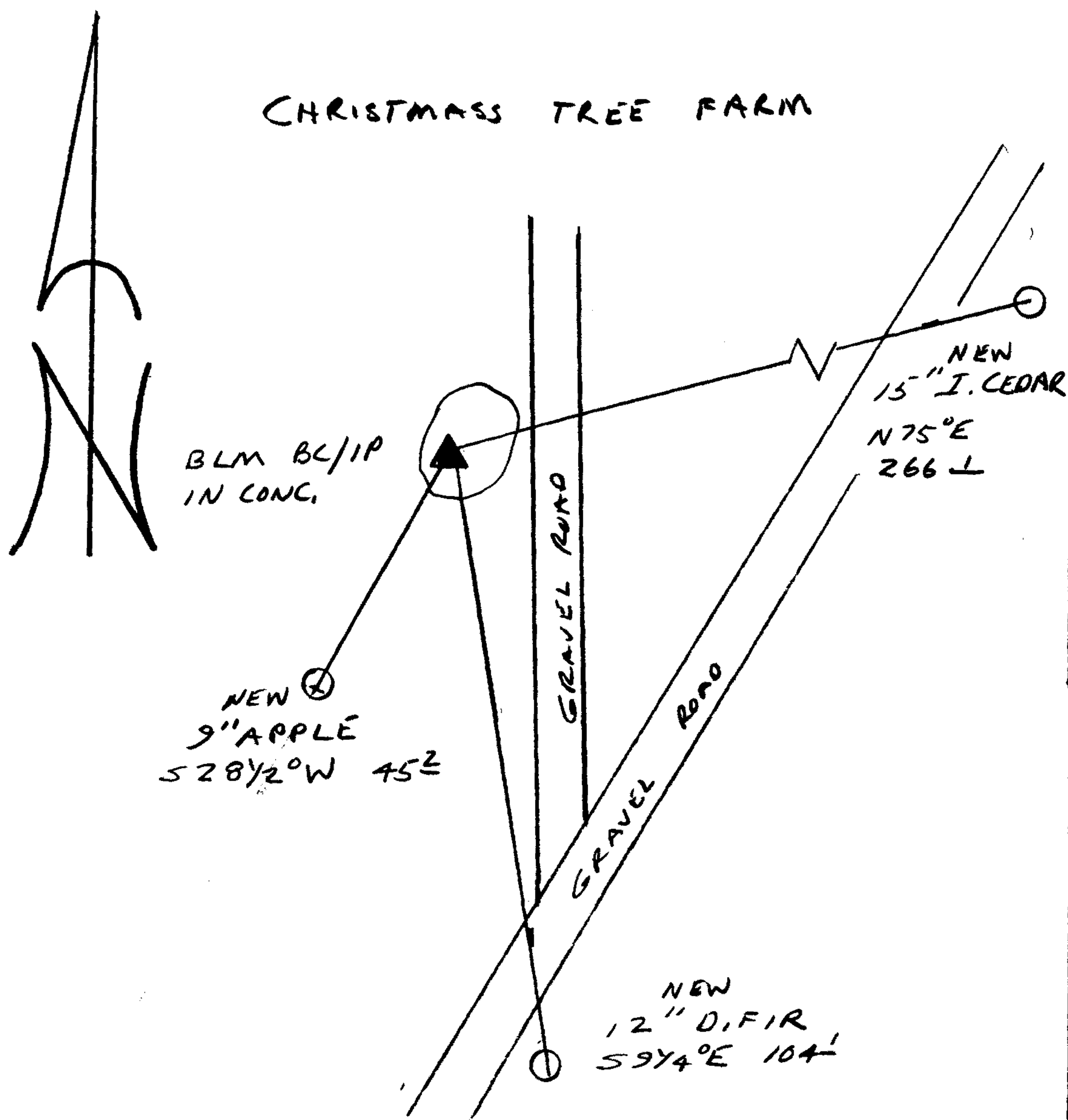
A DOUBLE TRUNKED I CEDAR DOUBLE BLAZED AND SCRIBED "E 116 S 24 CS BT" ON 15" DIA. SOUTH TRUNK, BEARS N 75° E, 266.1 FT TO CENTER OF ROOT CROWN

12" DIA. D. FIR DOUBLE BLAZED AND SCRIBED "E 116 S 25 CS BT" BEARS S 97 1/4° E, 104 FT

9" DIA. APPLE NOT BLAZE OR SCRIBED BEARS S 28 1/2° W, 45 1/2 FT.

Sketch of Monument, Accessories, and General Area

Location & Comments



Comp. Declin. 18° E
 Agency DCSO
 Party Chief RANDALL W SMITH
 Notekeeper Randall W Smith
 Witnesses STEPHEN J FIAUSE

Address

Surveyor's Seal

REGISTERED
PROFESSIONAL
LAND SURVEYOR

Randall W Smith

OREGON
JULY 25, 1990
RANDALL W. SMITH
2489