

GOVERNMENT CORNER RESTORATION FORM

Township 22S Range 12W Sec. 16 County DOUGLAS

FILED

State OR Date 1/30/92 No. _____

FEB 5 1992

Corner Designation

S/16
517/516

COUNTY SURVEYOR
DOUGLAS COUNTY, ORE.

- Condition Report Only
- Not Found
- Renewed
- Unrecorded
- Surveyed In
- Referenced Out

Previous Renewals REN # 214

Monument(s) Found: (Condition and Source)

2 3/8" DIA. OLDS BRASS CAP ON A
1 3/8" O.D. IRON PIPE, PROTRUDING
6" ABOVE A 2 FT DIA. MOUND
OF SANDSTONE. (REN. # 214)

DOUGLAS COUNTY SURVEYORS

T 22S

S/16
517 | 516

R 12W

1986

OFFICE

Accessories Found:

3 BT'S AS RECORDED IN REN # 214 FOUND OK
8" SPRUCE BEARING S 87 2/3° E 67.2 FT IS NOW DOWN
AND OUT OF POSITION.

244 x

C.S. File No. _____

C.S. File No. 64/23-A

RENEWAL

Monument Set (Procedure and Description)

Monument Detail

POSITION OF S 1/16 COR WAS IN ERROR
 BECAUSE OF A PROBLEM WITH TIE
 MADE TO SE COR OF SECTION 17 IN 1986.

POSITION OF DC SO BC/IP IS REFERENCED, BC/IP IS
 REMOVED, I.P. MEASURED 32" LONG. A
 5/8" BY 30" LONG IRON ROD WITH PLASTIC
 DC SO CAP IS SET AT REFERENCED BC/IP
 POSITION. I.P. PROTRUDES 4" ABOVE A
 2 FT DIA. MOUND OF SANDSTONE.

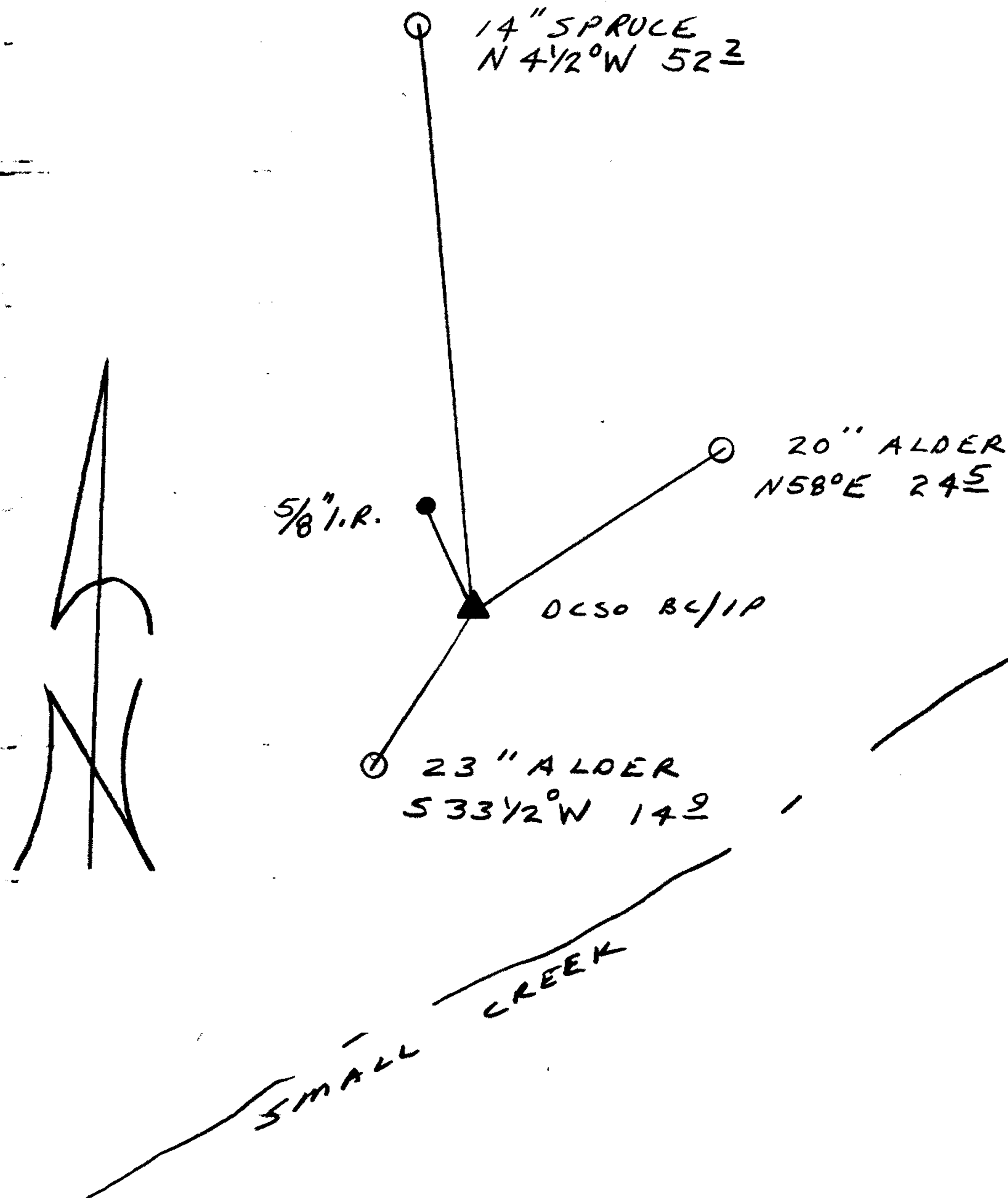
THE MARKS "RESET 1992" ARE ADDED
 TO DC SO BRASSCAP. BC/IP IS SET AT
 A NEWLY DETERMINED POSITION OF THE
 S 1/16 COR. BC/IP PROTRUDES 5" ABOVE
 MOUND OF SANDSTONE'S

DOUGLAS COUNTY SURVEYORS
 T 22 S
 S 1/16
 S 17 | S 16
 RESET 1992
 R 12 W
 1986
 OFFICE

New Accessories SAME BT'S AS USED IN REN #214

- 13" NOW 14" DIA. SPRUCE WITH A PARTIALLY HEALED DOUBLE BLAZE, SCRIBING VISIBLE "S 1/16 S 17 CS BT" (S 16 CHANGED TO S 17) BEARS N 4 1/2° W, 52.2 FT
- 19" NOW 20" DIA. ALDER WITH A PARTIALLY HEALED DOUBLE BLAZE, SCRIBING VISIBLE "S 1/16 S 16 CS BT" BEARS N 58° E, 24.5 FT
- 22" NOW 23" DIA. ALDER WITH A PARTIALLY HEALED DOUBLE BLAZE, SCRIBING VISIBLE "S 1/16 S 17 CS BT", BEARS S 33 1/2° W, 14.9 FT
- 5/8" I.R. WITH PLASTIC DC SO CAP BEARS N 23 3/4° W, 8.9 FT.

Sketch of Monument, Accessories, and General Area



Location & Comments

CORNER LIES NEAR THE
 BOTTOM OF A STEEP SLOPE
 APPROX 20 FT NORTH OF
 NORTHEAST RUNNING CREEK.

BEARINGS TAKEN WITH STAFF
 COMPASS

Comp. Declin. 18° E
 Agency DC SO
 Party Chief RANDALL W. SMITH
 Notekeeper Randall W. Smith
 Witnesses STEPHEN J. FLAISE

Address

Surveyor's Seal

REGISTERED
 PROFESSIONAL
 LAND SURVEYOR

Randall W. Smith

OREGON
 JULY 25, 1990
 RANDALL W. SMITH
 2469