

GOVERNMENT CORNER RESTORATION FORM

FILED

Township 32 S Range 6 W Sec. 28 County DOUGLAS

State OR Date 1/16/92 No. _____ JAN 23 1992

Corner Designation

1/4 S29 | S28

COUNTY SURVEYOR

DOUGLAS COUNTY, ORE.

- Condition Report Only
- Not Found
- Renewed
- Unrecorded
- Surveyed In
- Referenced Out

Previous Renewals #41 1980 BLM D. RESURVEY

Monument(s) Found: (Condition and Source)

3 1/4" DIA. BRASS CAP ON A 2 1/2" O.D. IRON PIPE, PROTRUDING 5" ABOVE GROUND. (1980 BLM)

U.S. DEPT. OF THE INTERIOR

T32S R6W

1/4

S29 | S28

1976

BUR. OF LAND MANAGEMENT

Accessories Found:

- ORIG. CEDAR (S66°W, 37°) NOW GONE
- 36" NOW 36" DIA 12 FT HIGH BURNT AND ROTTING D. FIR SNAG NO SCRIBING OR BLAZES VISIBLE, BEARS S38°E, 11.9 FT (AGREES WITH REC) REN#41
- 6" NOW 8" DIA. 6 FT HIGH TAN OAK STUMP WITH A FULLY HEALED SINGLE BLAZE, BEARS S28°W, 33.3 FT (AGREES WITH REC). REN#41

- 12" NOW 13" DIA 5 FT HIGH D. FIR STUMP WITH A FULLY HEALED SINGLE BLAZE BEARS S65°W, 76.6 FT (AGREES WITH REC) 1980 BLM

10" NOW 13" DIA. DEAD D. FIR WITH A FULLY HEALED SINGLE BLAZE BEARS N13 1/4°E, 49.4 FT (REC N13 1/4°E, 57 LKS) 1980 BLM

57 FT AT 30°

?

MIGHT BE WERE THE DISTANCE PROBLEM CAME FROM, (AN UNRECORDED SLOPE DISTANCE IN FT)

C.S. File No. 64/23-3

792

#1844

C

Monument Set (Procedure and Description)

Monument Detail

NONE

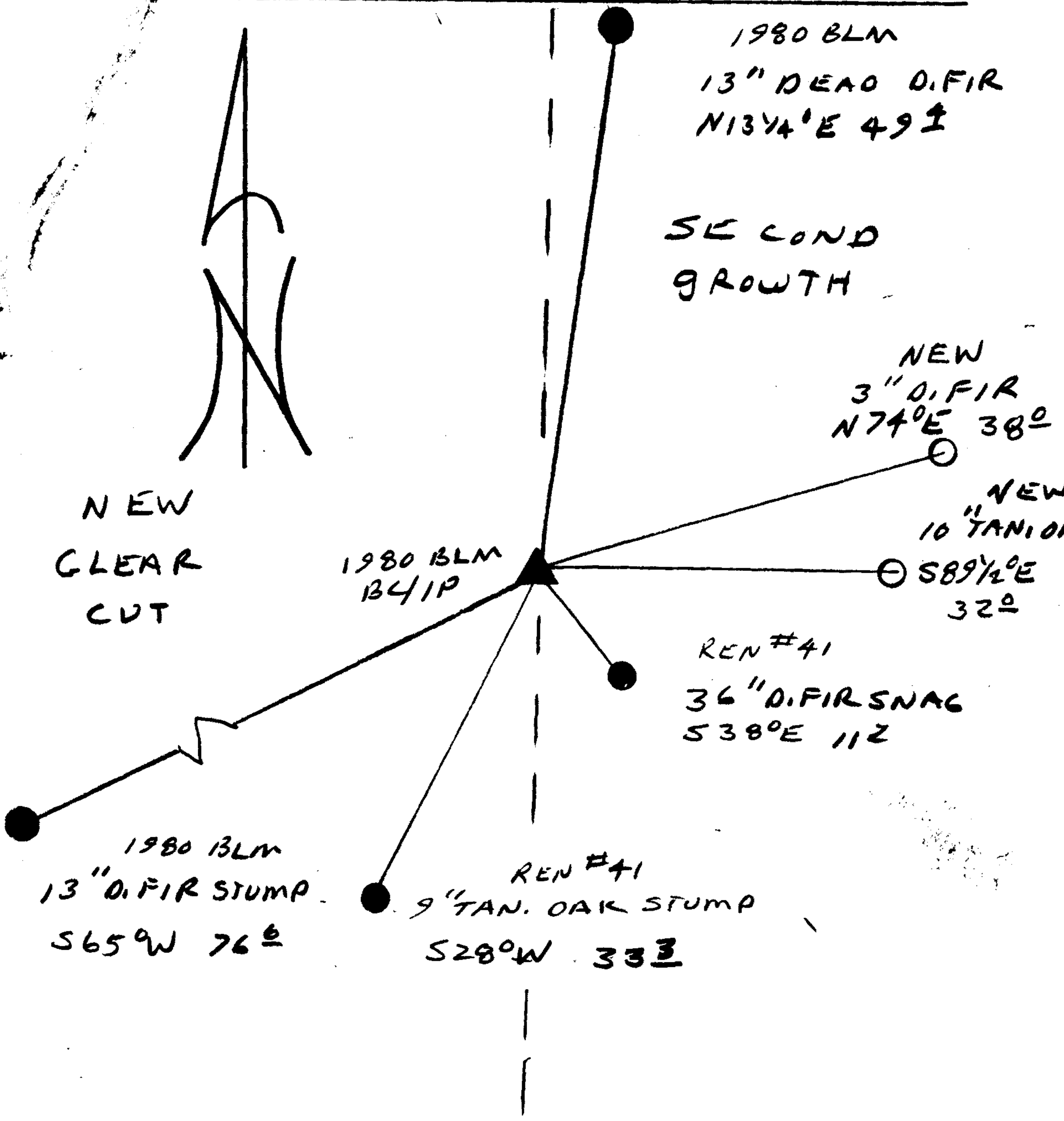
N/A

New Accessories

3" DIA. D. FIR DOUBLE BLAZED AND SCRIBED "X BT"
BEARS N 74° E, 38.0 FT TO CENTER OF TRUNK
AT UPPER BLAZE

10" DIA TAN. OAK BARK SCRIBED "Y 4 S 28 CS BT"
BEARS S 89 1/2° E, 32.0 FT

Sketch of Monument, Accessories, and General Area



Location & Comments

CORNER LIES ON A NORTH
- SOUTH CUT LINE ON
A SOUTHEAST SLOPE.

Comp. Declin. 18° E
Agency OLSO
Party Chief RANDALL W SMITH
Notekeeper Randall W Smith
Witnesses STEPHEN J FLAUSE

Address

Surveyor's Seal

REGISTERED
PROFESSIONAL
LAND SURVEYOR

Randall W Smith

OREGON
JULY 25, 1990
RANDALL W. SMITH
2469