

GOVERNMENT CORNER RESTORATION FORM

FILED

Township 31S Range 5W Sec. 31 County DOUGLAS

State OR Date 1/7/92 No. _____

JAN 13 1992

Corner Designation AS DETERMINED IN REN #100

COUNTY SURVEYOR
DOUGLAS COUNTY, ORE.

S36	S31
S1	S6

- Condition Report Only
- Not Found
- Renewed
- Unrecorded
- Surveyed In
- Referenced Out

Previous Renewals (T31-5) (T31-6) (T32-5) (T32-6)
(#56) (#100) (62, 87) (124, 139) (76A, 88)

MONUMENT DETAIL

Monument(s) Found: (Condition and Source)

ORE. STATE FORESTRY 3" BRASS
CAP ON A 1 1/2" O.D. IRON PIPE
PROTRUDING 7" ABOVE GROUND.
(REN #100)

OREGON STATE BOARD
T 31 S

1" O.D. IRON PIPE PROTRUDING
5" ABOVE GROUND (REN #56)

R6W

S36	S31
S1	S6

 R5W

1" I.P. BEARS WEST, 13.3 FT
FROM ORE. STATE FORESTRY BE/1P
CAGREES WITH REN #100)

T 32 S
1966

OF FORESTRY RS 359

Accessories Found:

55" NOW 58" DIA. D. FIR WITH A FULLY HEALED SINGLE
BLAZE ON THE NW TRUNK AND BARK SCRIBED "LS 359"
ON NORTH TRUNK, BEARS S15°W, 13.8 FT (REC. S15°W
11.5 FT DIST TO BARK SCRIBING) REN # 100

4" NOW 9" DIA. 1 1/2 FT HIGH HEMLOCK STUMP WITH A
FULLY HEALED BLAZE, BEARS S58°E, 28.3 FT
(AGREES WITH REC.) REN #100

4" NOW 11" DIA. D. FIR WITH A FULLY HEALED SINGLE
BLAZE, BEARS N 9°E, 19.0 FT (AGREES WITH REC) REN #100

6" NOW 12" DIA 1 1/2 FT HIGH D. FIR STUMP WITH A
FULLY HEALED SINGLE BLAZE, BEARS N 86°W,
54.5 FT. (AGREES WITH REC.) REN #100

#123 T31-5 X
#160 T31-6 X
#183 T32-6 X
#231 T32-5 X

64/23-2

RENEWAL

Monument Set (Procedure and Description)

Monument Detail

NONE

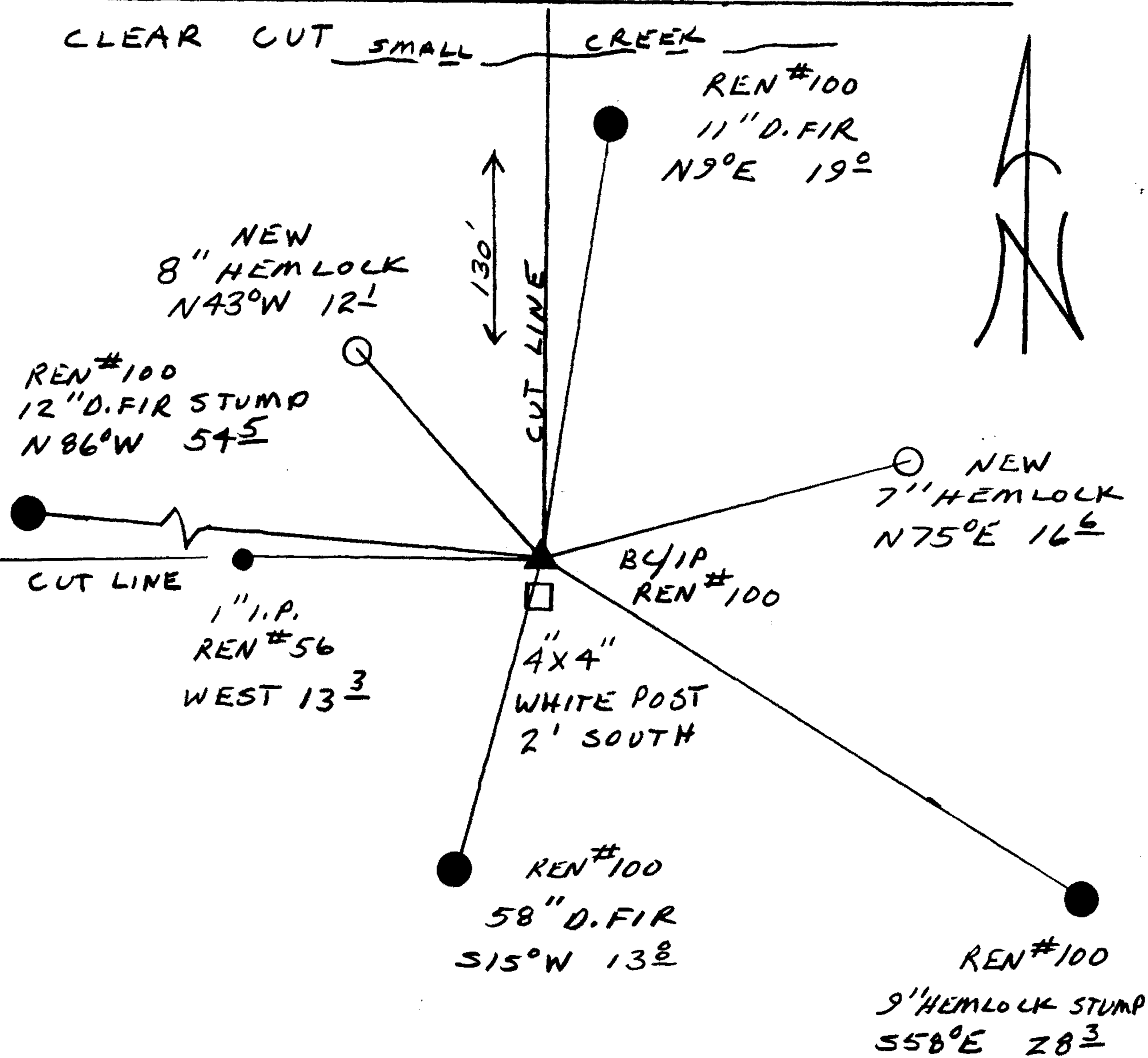
N/A

NEW BT'S GO TO CORNER POSITION AS DETERMINED BY ORE. STATE FORESTERY
New Accessories IN REN #100

8" DIA. HEMLOCK DOUBLE BLAZED AND SCRIBED "T31S R6W
S36 CS BT" BEARS N43°W, 12.1 FT

7" DIA. HEMLOCK DOUBLE BLAZED AND SCRIBED "T31S R5W
S31 CS BT" BEARS N75°E, 16.6 FT.

Sketch of Monument, Accessories, and General Area



Location & Comments

CORNER LIES ON A STEEP NORTH FACING SLOPE

SEE CS FILE # 49/92 FOR CORRESPONDENCE ON THE ESTABLISHMENT OF CORNER POSITION

Comp. Declin. 18° E
Agency DCSO
Party Chief RANDALL W. SMITH
Notekeeper *Randall W. Smith*
Witnesses STEPHEN J. FLAUSE

Address

Surveyor's Seal

REGISTERED PROFESSIONAL LAND SURVEYOR

Randall W. Smith

OREGON
JULY 25, 1990
RANDALL W. SMITH
2469