

GOVERNMENT CORNER RESTORATION FORM

FILED

Township 22S Range 4W Sec. 23 County DOUGLAS

State OR Date 11/14/91 No. \_\_\_\_\_

DEC 4 1991

Corner Designation

COUNTY SURVEYOR  
DOUGLAS COUNTY, ORE.

Condition Report Only

Not Found

Renewed

Unrecorded

Surveyed In

Referenced Out

MONUMENT DETAIL

$\frac{1}{4}$   $\frac{S 23}{S 26}$

Previous Renewals #41

Monument(s) Found: (Condition and Source)

A ~~3/4~~" I.D. IRON PIPE PROTRUDING  
10" ABOVE GROUND. #41

N/A

Accessories Found:

ORIG. BT'S LOOKED FOR NONE FD

8" NOW 15" DIA. D. FIR WITH A FULLY HEALED DOUBLE BLAZE  
BEARS WEST, 17.0 FT (REC S86°W, 17.0 FT) #41

8" NOW 20" DIA. D. FIR WITH A FULLY HEALED SINGLE BLAZE  
BEARS N81 1/2° E, 26.2 FT (REC N73° E, 25.2 FT) #41

#156 X

G.S. File No. 64/21-10

C

RENEWAL

Monument Set (Procedure and Description)

Monument Detail

3/4" I.D. I.P. IS REFERENCED AND REMOVED, MEASURED 44" LONG.

A 1 3/8" O.D. BY 32" LONG IRON PIPE WITH A 2 3/8" DIA BRASS CAP IS SET AT REFERENCE POSITION OF 3/4" I.P. BC/IP PROTRUDES 6" ABOVE GROUND.

3/4" I.P. IS PLACED ALONG WEST EDGE OF BC/IP, PROTRUDES 4" ABOVE GROUND.

DOUGLAS COUNTY SURVEYORS OFFICE

T 22 S R 4 W

5 23  
 1/4 5 26

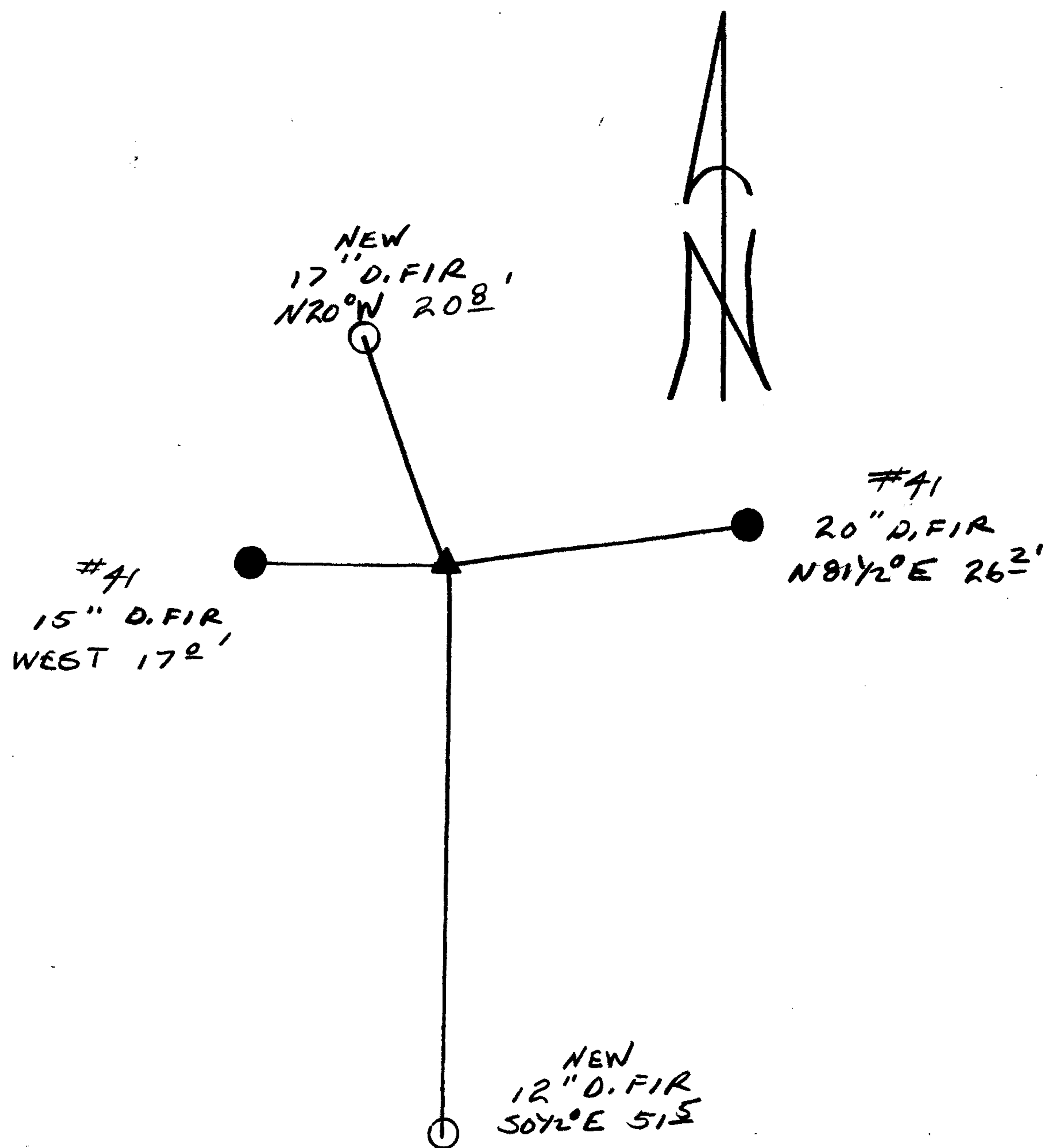
1991

New Accessories

17" DIA. D. FIR DOUBLE BLAZED AND SCRIBED "1/4 S 23 CS BT" BEARS N 20° W, 20.8 FT

12" DIA. D. FIR DOUBLE BLAZED AND SCRIBED "1/4 S 26 CS BT" BEARS S 0 1/2° E, 51.5 FT

Sketch of Monument, Accessories, and General Area



Location & Comments

CORNER LIES APPROX 50 FT EAST OF A GRAVEL ROAD

Comp. Declin. 18° E  
 Agency DC SO  
 Party Chief RANDALL W. SMITH  
 Notekeeper Randall W. Smith  
 Witnesses STEPHEN J. FLAUSE

Address

Surveyor's Seal  
 REGISTERED PROFESSIONAL LAND SURVEYOR

Randall W. Smith

OREGON  
 JULY 25, 1990  
 RANDALL W. SMITH  
 2469