

jh

Township Z15 Range 5W Sec. 18 County DOUGLAS

State OR Date 11/19/91 No. \_\_\_\_\_

DEC 4 1991

Corner Designation

C/4 S18

COUNTY SURVEYOR  
DOUGLAS COUNTY, ORE.

- Condition Report Only
- Not Found
- Renewed
- Unrecorded
- Surveyed In
- Referenced Out

Previous Renewals #167

Monument(s) Found: (Condition and Source)

2 1/2" DIA. BRASS CAP ON A 2" O.D. IRON PIPE, PROTRUDES 9" ABOVE GROUND. CREN #167

MONUMENT DETAIL

T 215

R 5W

C/4 + 318

PLS 752

1989

Accessories Found:

9" NOW 9" DIA ALDER WITH BARK SCRIBING VISIBLE " C/4 S18 BT" A "W" NAIL IS AT BASE. BEARS N27 1/2° E, 4.2 FT (REC. N33 1/2° E 3.7 FT DIST. IS TO "W" NAIL) (REN #167)

11" NOW 13" DIA. D.FIR WITH A PARTIALLY HEALED DOUBLE BLAZE, SCRIBING VISIBLE " C/4 S18 " A "W" NAIL IS AT BASE. BEARS N32° W, 24.3 FT (REC N28 1/2° W, 23.8 FT DIST. IS TO "W" NAIL) BT IS BISTOL BUTTED BEARING'S AND DISTANCES TAKEN TO PLUMB PORTION OF TRUNK. (REN #167)

x

Monument Set (Procedure and Description)

NONE

Monument Detail

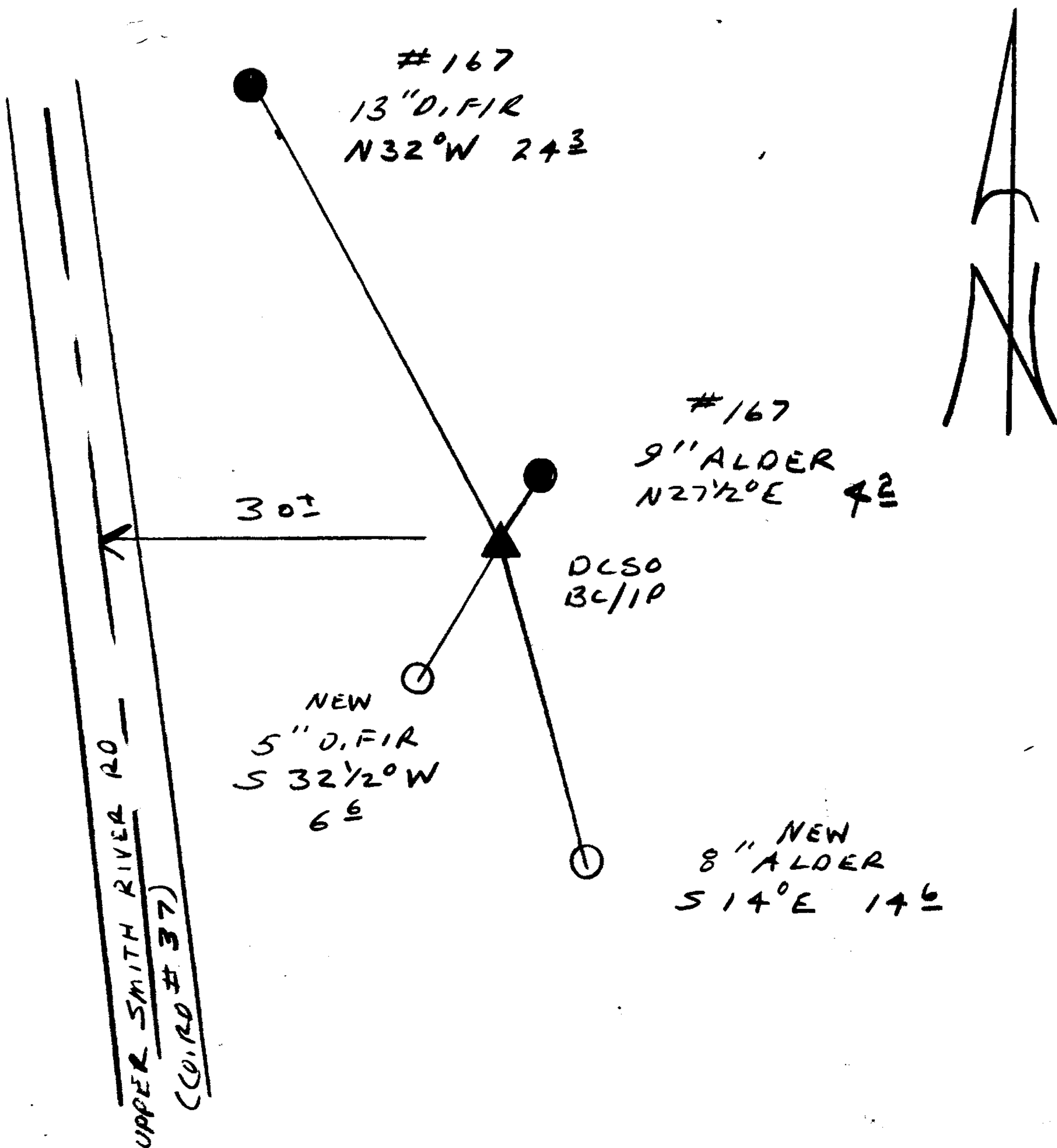
N/A

New Accessories

8" DIA. ALDER BARK SCRIBED "C/4 S18 CS BT"  
BEARS S 14° E, 14.6 FT.

5" DIA. D. FIR DOUBLE BLAZED AND SCRIBED "X BT"  
BEARS S 32 1/2° W, 6.6 FT

Sketch of Monument, Accessories, and General Area



Location & Comments

CORNER IS APPROX.  
30 FT EAST OF C/4 OF UPPER  
SMITH RIVER ROAD

Comp. Declin. 18° E  
Agency DLSO  
Party Chief RANDALL W SMITH  
Notekeeper Randall W Smith  
Witnesses STEPHEN J FLAUSE

Address

Surveyor's Seal

REGISTERED  
PROFESSIONAL  
LAND SURVEYOR

*Randall W Smith*

OREGON  
JULY 26, 1990  
RANDALL W. SMITH  
2489