

GOVERNMENT CORNER RESTORATION FORM

Township 20S Range 4W Sec. 35 County DOUGLAS

FILED

State OR Date 11/4/91

No. _____ DEC 4 1991

Corner Designation

S35 | S36
S2 | S1

COUNTY SURVEYOR
DOUGLAS COUNTY, ORE.

- Condition Report Only
- Not Found
- Renewed
- Unrecorded
- Surveyed In
- Referenced Out

Previous Renewals #58, 1958 WEYERHAEUSER, 1971 BLM

SEE 1971 BLM NOTES

MONUMENT DETAIL

Monument(s) Found: (Condition and Source)

3/4" BLM BRASS CAP ON A
2 1/2" O.D. IRON PIPE PROTRUDING
4" ABOVE GROUND

U S DEPT OF THE INTERIOR

T 20 S R 4 W

A FIRMLY SET SANDSTONE ROCK
IS FOUND ALONG EAST EDGE
OF BC/IP. TOP MEASURES 8" X 4"
PROTRUDE 4" ABOVE GROUND UNKNOWN
ORIGIN

S35 | S36
S2 | S1

T 21 S

1971

Accessories Found:

20" NOW 33" DIA 1 1/2 FT HIGH DEIR STUMP, NO MARKS VISIBLE
BEARS S12 1/2° W, 33.0 FT (REC. S14° W, 33.0 FT) ORIG. BT

6" NOW 8" DIA. 3/2 FT HIGH BURNT CEDAR STAMP, NO MARKS
VISIBLE, BEARS N28 1/2° W, 54.1 FT (REC N25° W, 54.1 FT) ORIG. BT

6" NOW 25" DIA. D. FIR WITH A FULLY HEALED DOUBLE BLAZE,
BEARS N56° E, 5.9 FT (AGREES WITH REC) REN#58

22" DIA. 1 1/2 FT HIGH D. FIR STUMP WITH A FULLY HEALED LOWER
BLAZE, BEARS S52° E, 18.9 FT (REC. S46 1/2° E, 18.9 FT) 1958 W.C.

33" DIA. 2 1/2 FT HIGH D. FIR STUMP WITH A ROTTED BLAZE, NO
SCRIBING VISIBLE, BEARS S27 1/2° W, 32.5 FT (REC. S57 1/2° W, 33.0 FT)
1958 W.C.

45" DIA. 5 FT HIGH D. FIR STUMP WITH A FULLY HEALED SINGLE
BLAZE, BEARS N45 1/2° W, 31.0 FT (REC. N42 1/2° W, 31.0 FT) 1958 W.C.

10" NOW 14" DIA. E. CEDAR WITH A FULLY HEALED SINGLE BLAZE,
BEARS N76° E, 16.5 FT (REC. N21° E, 16.5 FT) 1971 BLM

12" NOW 20" DIA. W. FIR WITH A FULLY HEALED SINGLE BLAZE,
BEARS S23 1/2° E, 18.5 FT (REC S19° E, 18.5 FT) 1971 BLM

#161
T21-4X

C.S. File No. 64/21-4

RENEWAL

Monument Set (Procedure and Description)

Monument Detail

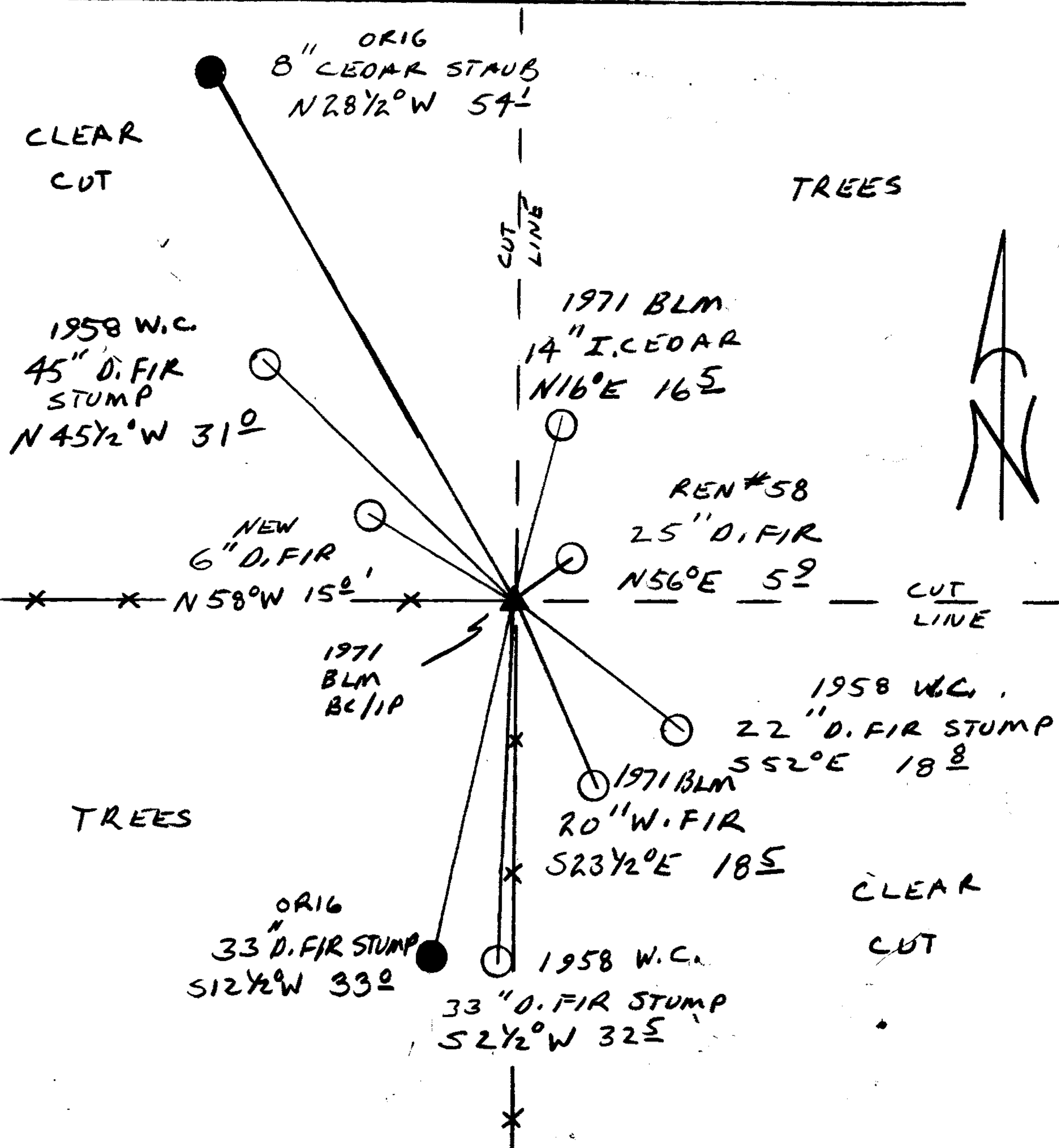
NONE

N/A

New Accessories

6" DIA. D. FIR DOUBLE BLAZED AND SCRIBED "TROS RAW S 35 CS BT"
BEARS N58°W, 15.0 FT

Sketch of Monument, Accessories, and General Area



Location & Comments

CORNER IS APPROX 150 FT WEST OF A BLM GRAVEL RD.

ALL BEARINGS TAKEN AWAY FROM CORNER, WIRE-FENCE EFFECTS COMPASS BEARINGS.

Comp. Declin. 18° E
 Agency DCSO
 Party Chief RANDALL W SMITH
 Notekeeper Randall W Smith
 Witnesses STEPHEN J FLAUSE

Address

REGISTERED Surveyor's Seal
 PROFESSIONAL LAND SURVEYOR
Randall W Smith
 OREGON
 JULY 25, 1998
 RANDALL W. SMITH
 2408