

GOVERNMENT CORNER RESTORATION FORM

Township 215 Range 5W Sec. 19 County DOUGLAS

FILED

JK

State OR Date 10/29/91 No. _____

NOV 18 1991

Corner Designation

519 | 520
530 | 529

COUNTY SURVEYOR

DOUGLAS COUNTY, ORE.

Condition Report Only

Not Found

Renewed

Unrecorded

Surveyed In

Referenced Out

Previous Renewals # 8 # 140

MONUMENT DETAIL

Monument(s) Found: (Condition and Source)

A 2 1/2" DIA. DCSO BRASS CAP
ON A 1 1/4" O.D. IRON PIPE, PROTRUDES
7" ABOVE GROUND. REN #170

A STONE MEASURING 8" X 6" PROTRUDING
5" ABOVE GROUND IS FOUND ALONG
EAST SIDE OF RLIP. NO MARKS
VISIBLE. (REC 2 FT X 6 X 8 INS.)
1880 RESURVEY

COUNTY SURVEYORS OFFICE

T 215

519 | 520

530 | 529

R 5W

1970

Accessories Found:

12" NOW ROTTED D.FIR STUMP OF INDETERMINABLE SIZE
WITH ILLEGIBLE SCRIBING VISIBLE, BEARS S 4° E, 150.4 FT
(REC S 2° E, 150.4 FT IN REN #140) REN #8

8" NOW 2 1/2" DIA. D.FIR WITH A FULLY HEALED SINGLE
BLAZE, BEARS S 3° E, 232.2 FT (REC S 1° E, 232.2 FT)
REN #140

14" NOW 17" DIA. APPLE WITH A PARTIALLY HEALED SINGLE
BLAZE, BEARS S 57° W, 135.8 FT (REC S 59° W, 135.8 FT)
REN #140

POWER POLE # 7C-48 2 BEARS N 30° W, 109.2 FT
(REC. N 28° W, 109.2 FT) REN #140

#177 T21-5

MAP FILE 64/21-2

C

Monument Set (Procedure and Description)

Monument Detail

NONE

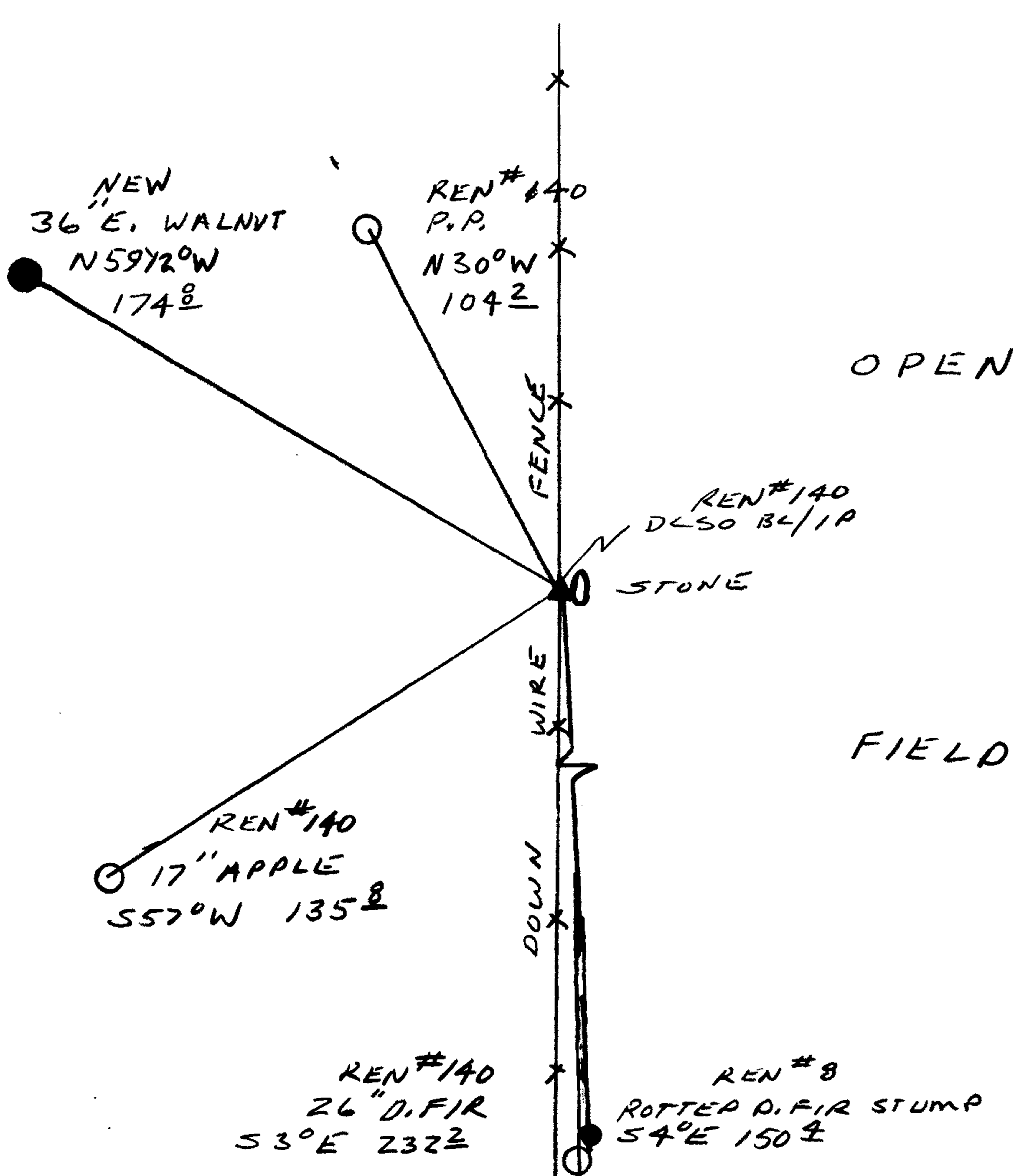
N/A

New Accessories

36" DIA. MEASURED 1 FT ABOVE GROUND, ENGLISH WALNUT NOT BLAZED OR SCRIBED, BEARS N 59 1/2° W, 174.8 FT

Sketch of Monument, Accessories, and General Area

Location & Comments



Comp. Declin. 18° E

Agency DLSO

Party Chief RANDALL W SMITH

Notekeeper Randall W Smith

Witnesses STEPHEN J FLAUSE

Address

REGISTERED
PROFESSIONAL
LAND SURVEYOR

Randall W Smith

OREGON
JULY 25, 1990
RANDALL W. SMITH
2469

Surveyor's Seal