

FILED

Township R1S Range 5W Sec. 7

County DOUGLAS

State OR

Date 10/29/91

No. \_\_\_\_\_

NOV 18 1991

Corner Designation

S12 | S7  
S13 | S18

COUNTY SURVEYOR  
DOUGLAS COUNTY, ORE.

- \_\_\_\_ Condition Report Only
- \_\_\_\_ Not Found
- Renewed
- \_\_\_\_ Unrecorded
- \_\_\_\_ Surveyed In
- \_\_\_\_ Referenced Out

Previous Renewals (\*81 \*114 T21-6)  
\*69 # 131 T21-5

Monument(s) Found: (Condition and Source)

A 2 1/2" DIA DCSO BRASS CAP ON  
1 1/4" O.D. IRON PIPE PROTRUDING  
10" ABOVE GROUND, REN #69

MONUMENT DETAIL

COUNTY SURVEYORS OFFICE

T 21 S

S12 | S7  
S13 | S18

R6W R5W

1961

Accessories Found:

18" NOW 29" DIA CEDAR WITH A PREVIOUSLY OPENED BURNT BLAZE, NO MARK VIS.  
BEARS N 75° W, 23.1 FT (AGREES WITH REC) ORIG. BT

35" NOW 33" DIA. 9 FT HIGH ROTTED D. FIR STUMP WITH  
CROSSER AXE MARKS ON BARK, BEARS N 47° E, 6.3 FT  
REC. N 47° E, 5.3 FT DISTANCE IS A POSSIBLE PACE MEASUREMENT)  
ORIG. BT

27" NOW 30" DIA. 5 FT HIGH ROTTED D. FIR STUMP WITH A  
PREVIOUSLY OPENED BLAZE, SCRIBING VISIBLE "S18 T21S B"  
BEARS S 61 1/2° E, 9.4 FT (REC. S 54° E, 9.4 FT ORIG. BT

7" NOW 8" DIA. DEAD CHINQUAPIN WITH A PREVIOUSLY OPENED  
ROTTED BLAZE, SCRIBING VISIBLE "T21S R5W", BEARS  
N 78° E 19.9 FT (AGREES WITH REC.) REN # 131

16" NOW 27" DIA. D. FIR WITH A FULLY HEALED DOUBLE BLAZE  
BEARS S 21° E, 47 1/2 FT (REC S 19° E, 47 1/2 FT) REN #69

36" NOW 31" DIA BARKED 6 FT HIGH D. FIR STUMP WITH A  
GAL. STEEL CAP ON TOP AND A HEALED BLAZE, BEARS  
S 65° W, 30.2 FT (AGREES WITH REC.) REN #69

24" NOW 21" DIA BARKED 7 FT HIGH D. FIR STUMP WITH A  
GAL. STEEL CAP ON TOP AND A HEALED BLAZE, BEARS  
WEST 42° FT (AGREES WITH REC.) REN #69

MAP FILE 64/21-1

#176 T21-5x  
#173 T21-4x

RENEWAL

Monument Set (Procedure and Description)

Monument Detail

NONE

N/A

New Accessories

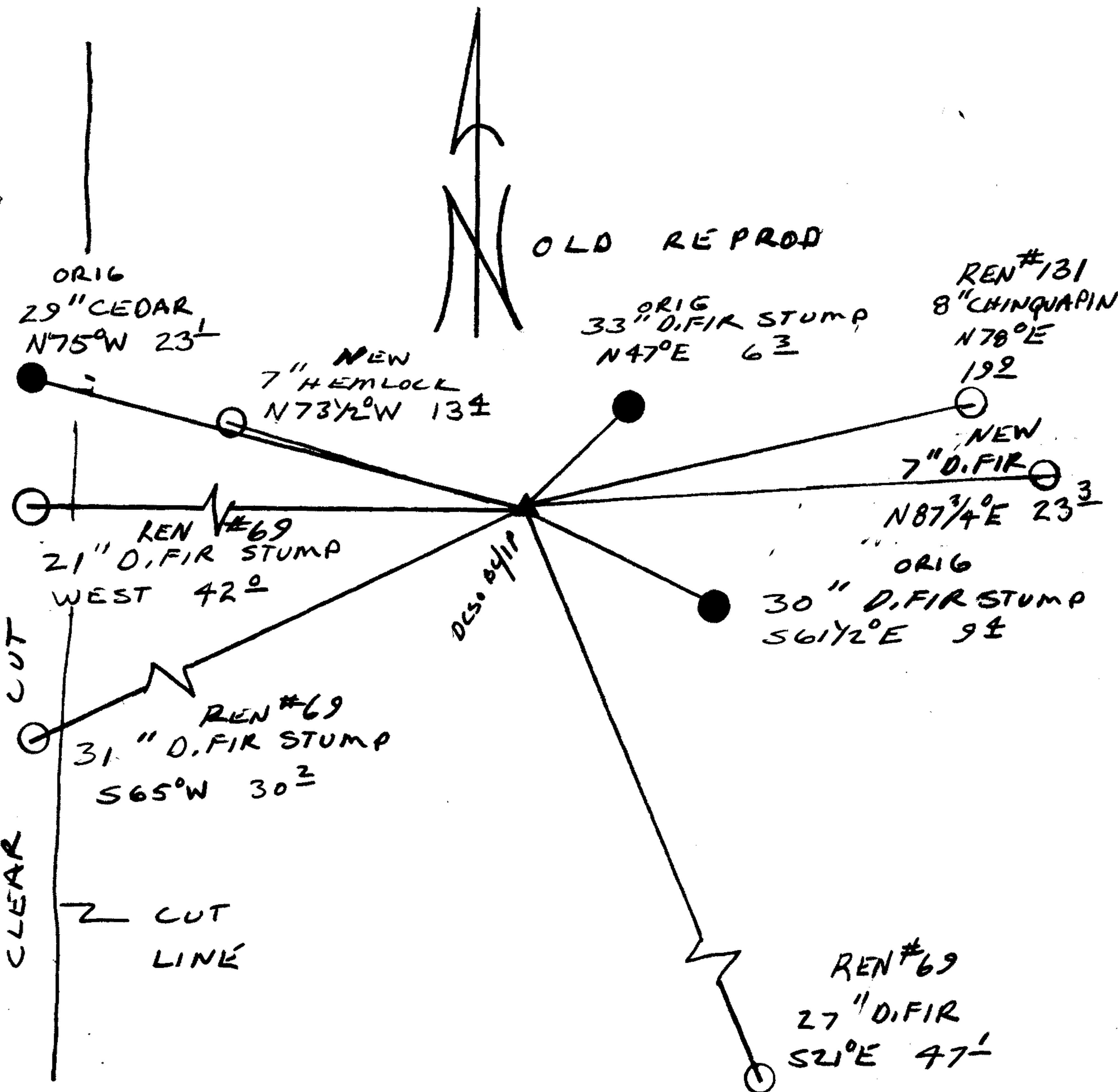
7" DIA. D. FIR DOUBLE BLAZED AND SCRIBED "T215 R5W S7CS BT"  
BEARS N 87 3/4° E, 23.3 FT

7" DIA. HEMLOCK DOUBLE BLAZED AND SCRIBED "T215 R6W S12CS BT"  
BEARS N 73 1/2° W, 13.4 FT

Sketch of Monument, Accessories, and General Area

Location & Comments

CORNER LIES NEAR  
THE EAST EDGE OF  
A CLEAR CUT



Comp. Declin. 18° E  
 Agency DCSO  
 Party Chief RANDALL W SMITH  
 Notekeeper Randall W Smith  
 Witnesses STEPHEN J FLAUSE

Address

Surveyor's Seal

REGISTERED  
 PROFESSIONAL  
 LAND SURVEYOR

*Randall W Smith*

OREGON  
 JULY 25, 1990  
 RANDALL W. SMITH  
 2469