

GOVERNMENT CORNER RESTORATION FORM

FILED

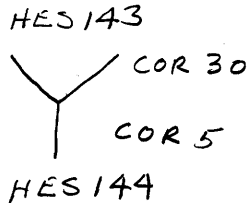
Township 29S Range 1E Sec. 9 County DOUGLAS

*jh*

State OR Date 9/19/91 No. \_\_\_\_\_

OCT 3 1991

Corner Designation



COUNTY SURVEYOR  
DOUGLAS COUNTY, ORE.

Condition Report Only

Not Found

Renewed

Unrecorded

Surveyed In

Referenced Out

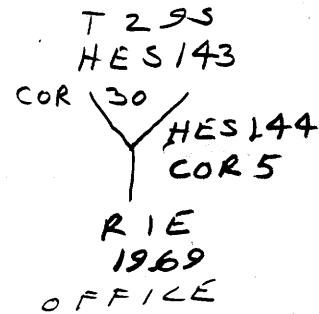
Previous Renewals #30

MONUMENT DETAIL

Monument(s) Found: (Condition and Source)

A 2 1/2" DIA DCSO BRASS CAP ON  
AN IRON PIPE FLUSH WITH  
GROUND.

COUNTY SURVEYORS



Accessories Found:

36" NOW 30" DIA 2 1/2' HIGH ROTTED D.FIR STUMP WITH AN  
OPEN BLAZE, NO SCRIBING VISIBLE, BEARS N 81°W, 31.7  
ORIG. BT (AGREES WITH REC)  
24" NOW 28" DIA. MAPLE WITH A FULLY HEALED SINGLE  
BLAZE, BEAR S 84 1/2° E, 143.5 FT MEASUREMENTS GO  
TO WESTERLY FORK OF MULTI TRUNK MAPLE (REC. S 81° E 143.5 FT)  
REN #30

CULVERT WITH "Y" FROM REN #30 NOT FOUND

#1964

Monument Set (Procedure and Description)

Monument Detail

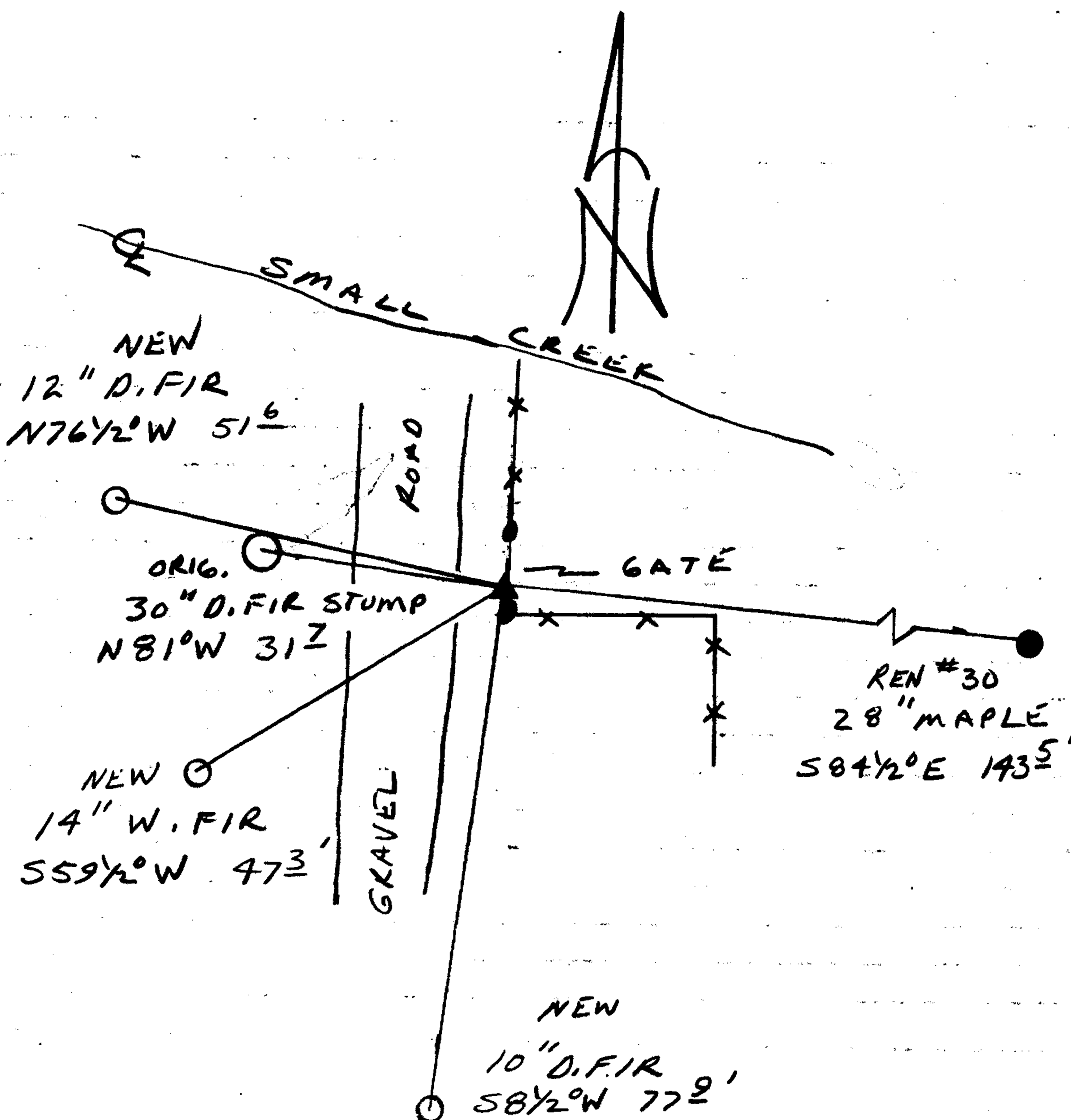
NONE

N/A

New Accessories

- 10" DIA. D. FIR DOUBLE BLAZED AND SCRIBED "5 HES 144 CS BT" BEARS S 8 1/4° W, 77.9 FT
- 12" DIA. D. FIR DOUBLE BLAZED AND SCRIBED "5 HES 144 CS BT" BEARS N 76 1/2° W, 51.6 FT
- 14" DIA. W. FIR DOUBLE BLAZED AND SCRIBED "5 HES 144 CS BT" BEARS S 59 1/2° W, 47.3 FT

Sketch of Monument, Accessories, and General Area



Location & Comments

CORNER LIES APPROX 10' EAST OF GRAVEL RD AT FENCE CORNER UNDER GATE

Comp. Declin. 18° E  
 Agency DCSO  
 Party Chief RANDALL W. SMITH  
 Notekeeper Randall W. Smith  
 Witnesses STEPHEN J. FLAUSE

Address

Surveyor's Seal

REGISTERED  
 PROFESSIONAL  
 LAND SURVEYOR

*Randall W. Smith*

OREGON  
 JULY 25, 1990  
 RANDALL W. SMITH  
 2469