

JK

Township 29S Range R1E Sec. 9 County DOUGLAS

OCT 3 1991

State OR Date 9/19/91 No. _____

Corner Designation

COUNTY SURVEYOR
DOUGLAS COUNTY, ORE.

- Condition Report Only
- Not Found
- Renewed
- Unrecorded
- Surveyed In
- Referenced Out

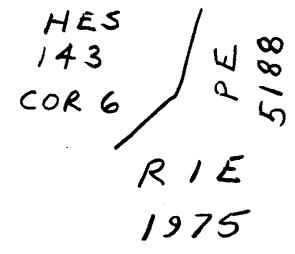


Previous Renewals #97

Monument(s) Found: (Condition and Source)

A 2 1/2" BRASS CAP ON AN IRON
PIPE FLUSH WITH GROUND.
BE/1P LIES IN ROTTED REMAINS
OF A D.FIR OF INDETERMINABLE
SIZE, NO BLAZES OR SCRIBING
FOUND. (ORIG CORNER TREE?) REN 97

T 29 S



Accessories Found:

13" NOW 18" DIA. DEAD W. FIR WITH A PARTIALLY HEALED
SINGLE BLAZE. ILLEGIBLE SCRIBING VISIBLE,
BEARS N62 1/2° E, 17.3 FT (AGREES WITH RECORD) REN #97

7" NOW 16" DIA. I. CEDAR WITH A FULLY HEALED SINGLE
BLAZE, BEARS S62° W, 90.0 FT. (AGREES WITH RECORD) REN #97

NO ORIG. BT'S FOUND

#1984

Monument Set (Procedure and Description)

Monument Detail

NONE

N/A

New Accessories

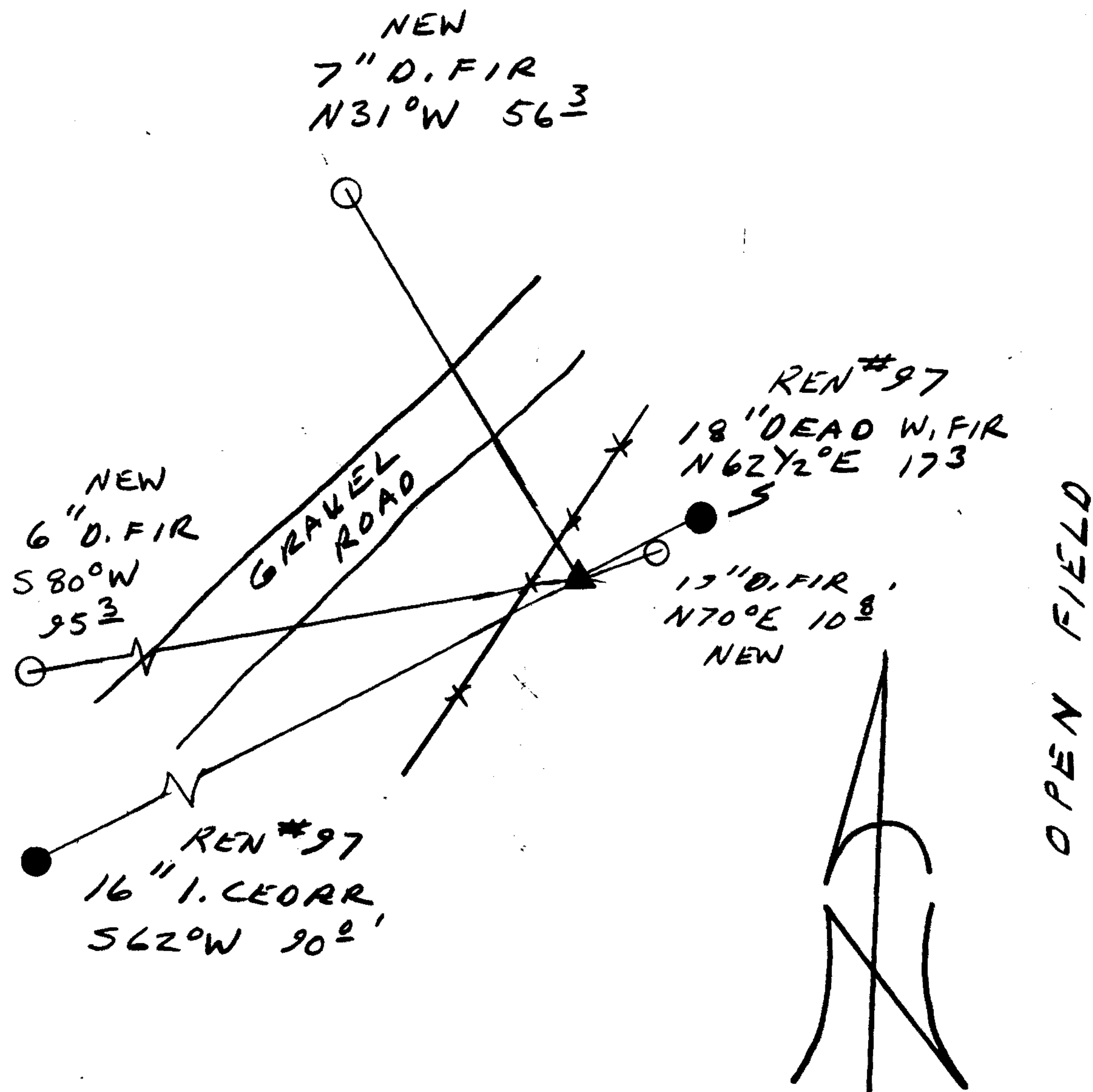
19" DIA. D. FIR DOUBLE BLAZED AND SCRIBED "6 HES 143 CS BT"
BEARS N70°E, 10.8 FT

6" DIA. D. FIR DOUBLE BLAZED AND SCRIBED "6 HES 143 CS BT"
BEARS S80°W, 95.3 FT

7" DIA. D. FIR DOUBLE BLAZED AND SCRIBED "6 HES 143 CS BT"
BEARS N31°W, 56.3 FT, MEASURED TO UPRIGHT PORTION OF PISTOL
BUTT TRUNK.

Sketch of Monument, Accessories, and General Area

Location & Comments



Comp. Declin. 18°E
 Agency DLSO
 Party Chief RANDALL W SMITH
 Notekeeper Randall W Smith
 Witnesses STEPHEN J FLAUSE

Address

Surveyor's Seal

REGISTERED
 PROFESSIONAL
 LAND SURVEYOR

Randall W Smith

OREGON
 JULY 25, 1990
 RANDALL W. SMITH
 2469