

GOVERNMENT CORNER RESTORATION FORM

FILED

Township 29S Range 1E Sec. 8 County DOUGLAS

State OR Date 9/18/91 No. _____

OCT 3 1991

Corner Designation

HES
144 COR
#4

COUNTY SURVEYOR
DOUGLAS COUNTY, ORE.

- Condition Report Only
- Not Found
- Renewed
- Unrecorded
- Surveyed In
- Referenced Out

Previous Renewals: #29

Monument(s) Found: (Condition and Source)

A 2 1/2" DIA DCSO BRASS CAP ON
 A 1 1/4" D.P. IRON PIPE, PROTRUDING
 15" ABOVE GROUND. BL/1P IS
 SURROUNDED BY A 2 FT DIA. MOUND
 OF STONE

COUNTY SURVEYOR'S
T29S

H.E.S.
144 COR
#4

R 1 E
1969
OFFICE

Accessories Found:

FROM POSITION BL/1P AS FOUND
 20" NOW 24" DIA. 2 1/2 FT HIGH BROKEN AND ROTTED D. FIR
 STUMP, SCRIBING IS VISIBLE ON AN OPEN BLAZE "BT"
 BEARS N 70° W, 26.9 FT (REC. N 63° W, 30.4 FT)
 (ORIG. BT)

14" NOW MULTI TRUNKED MAPLE WITH A FULLY
 HEALED SINGLE BLAZE ON 16" DIA NORTH EAST TRUNK
 BEARS N 30° W, 17.8 FT (REC. N 30° W, 21.8 FT) (REN #29)

#195X

C.S. File No. 69/17-3

RENEWAL

Monument Set (Procedure and Description)

Monument Detail

BC/IP FROM RENEWAL #29 MEASURED 36" LONG
 IS RESET AT A POINT OF RECORD
 BEARING AND DISTANCE FROM REMAINING
 ORIG. BT N63°W 30.4 FT. ROOT
 CROWN OF REN #29 MAPLE BT
 BEARS N30°W 22.8 FT (REC.
 N30°W 21.9 FT, DIST. COULD BE A
 FACE MEASUREMENT.) BC/IP
 NOW PROTRUDES 5" ABOVE GROUND,
 IS SURROUNDED BY A 3 FT DIA
 MOUND OF STONE. THE MARKS "RESET 1991"
 ARE ADDED TO BRASS CAP.
 FOUND POSITION OF BC/IP IS
 REFERENCED WITH A 5/8" X 30"
 LONG I.R. WITH A DC SO ALUM. CAP
 PROTRUDES 3" ABOVE GROUND
 I.R. BEARS N23 1/4° W 5.08 FT FROM BC/IP

COUNTY SURVEYOR'S
T29S

HE.S. COR
 144 #4
 RESET
 1991
 RIE
 1969

OFFICE

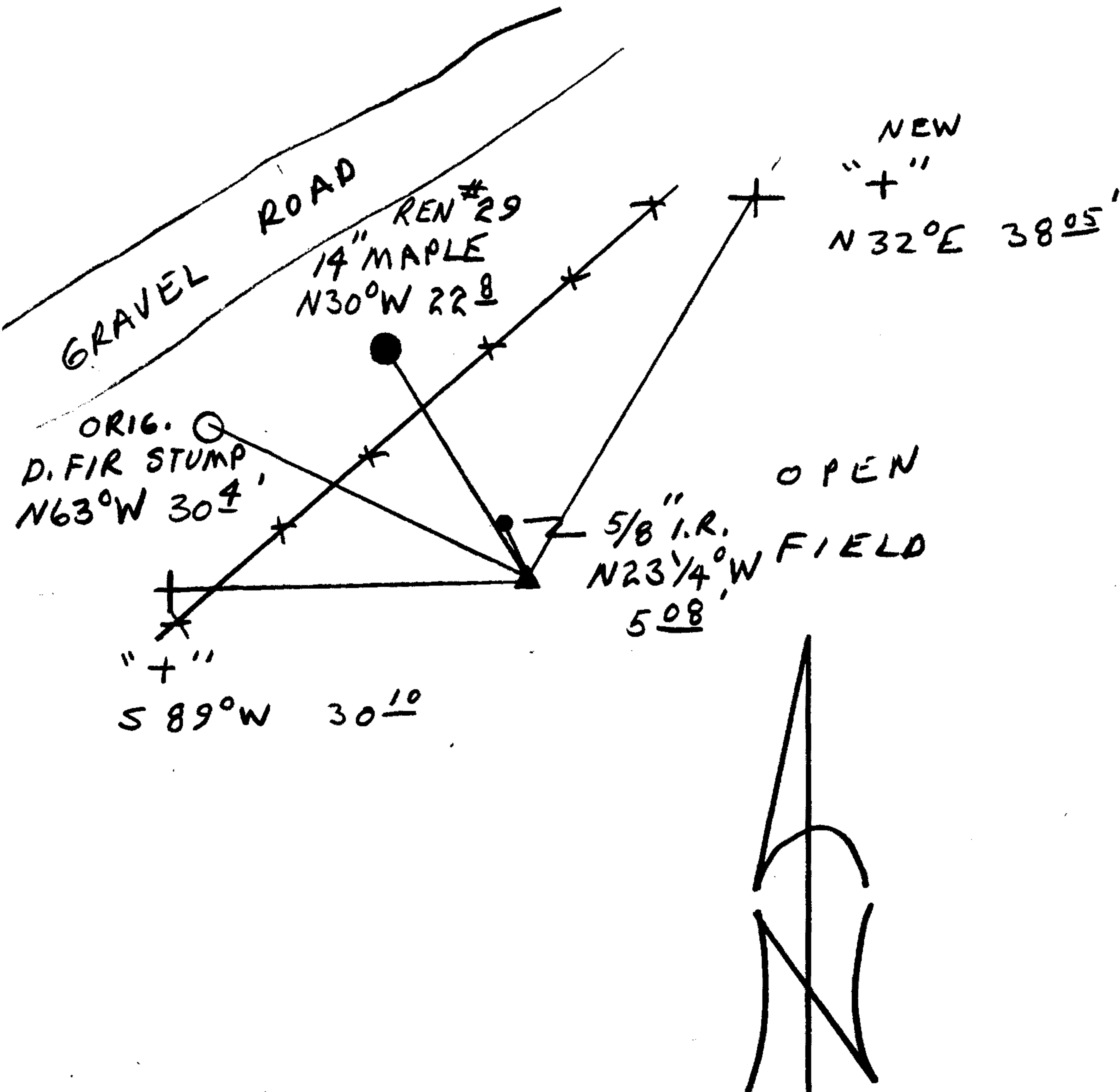
New Accessories

7" + " IS CHISELED ON LARGE VOLCANIC ROCK, BEARS
 N32°E, 38.05 FT,

7" + " IS CHISELED ON LARGE VOLCANIC ROCK, BEARS
 S89°W, 30.10 FT.

Sketch of Monument, Accessories, and General Area

Location & Comments



Comp. Declin. 18°E
 Agency DC SO
 Party Chief RANDALL W. SMITH
 Notekeeper Randall W. Smith
 Witnesses STEPHEN J. FLAUSE
 LEONARD HERZSTEIN

Address

REGISTERED Surveyor's Seal
 PROFESSIONAL
 LAND SURVEYOR

Randall W. Smith

OREGON
 JULY 25, 1990
 RANDALL W. SMITH
 2469