

Township 255 Range 6W Sec. 31 County DOUGLAS

jh

State OR Date 9/25/91 No. _____

OCT 3 1991

Corner Designation

1/4 531 | 532

COUNTY SURVEYOR
DOUGLAS COUNTY, ORE.

- Condition Report Only
- Not Found
- Renewed
- Unrecorded
- Surveyed In
- Referenced Out

MONUMENT DETAIL

Previous Renewals ~~#131~~ 200140

Monument(s) Found: (Condition and Source)

3/4" I.R. 14" BELOW GROUND.
(REN #131)

1" X 36" LONG I.P. WITHOUT BRASS
CAP, BENT OVER TO SOUTHEAST
8" BELOW GROUND. (WITNESS CORNER
FROM REN #131)

N/A

Accessories Found:

BEARING AND DISTANCES FROM
PLUMB POSITION OF FLANGES (WIT. COR.) REN #~~131~~
3/4" I.R. BEARS S1°E, 125.0 FT (REC. SOUTH 125.0 FT) REN #131

36" NOM 41" DIA B. OAK WITH A FULLY HEALED DOUBLE BLAZE,
BEARS N36°W, 99.6 FT (AGREES WITH REC) REN #131

NO OTHER BT'S FOUND

RENEWAL

Monument Detail

Monument Set (Procedure and Description)

FLANGES OF I.P. WITNESS CORNER ARE REFERENCED, A 2 1/2" DIA BRASS CAP ON A 1 3/8" O.D. BY 32" LONG IRON PIPE IS SET AT REFERENCED POSITION BC/IP IS SET FLUSH WITH GROUND. I.P. FROM REN#133 IS SET ALONG SOUTH SIDE OF BC/IP.

DOUGLAS COUNTY SURVEYORS

B 0 1

1 9 9 1

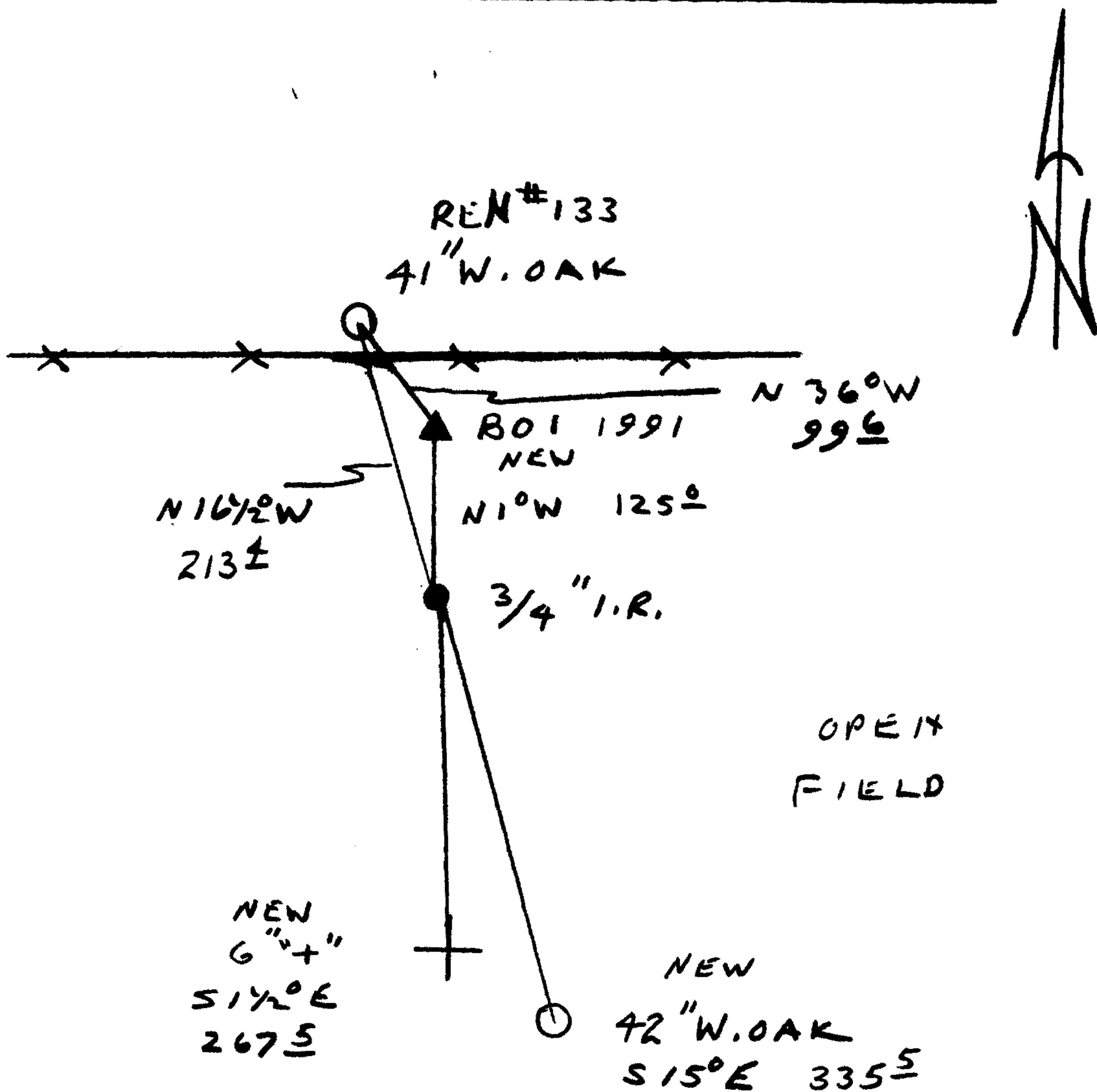
O F F I C E

FROM 3/4" I.P.
New Accessories

DCSO BC/IP "B01 1991" BEARS N1°W, 125.0 FT
 41" W. OAK WITH A FULLY HEALED DOUBLE BLAZE (SCRIBED IN REN#133) BEARS N16 1/2°W, 213.4 FT
 42" W. OAK DOUBLE BLAZED AND SCRIBED "Y4 S32 CS BT" BEARS S15°E, 335.5 FT.
 6" "x" ETCHED IN A 6 FT BY 5 FT BY 4 FT. HIGH SANDSTONE LEDGE ROCK, BEARS S1 1/2°E, 267.5 FT.

Sketch of Monument, Accessories, and General Area

Location & Comments



Comp. Declin. 18°E
 Agency DCSO
 Party Chief RANDALL W SMITH
 Notekeeper Randall W Smith
 Witnesses STEPHEN J FLAUSE

Address

REGISTERED **Surveyor's Seal**
 PROFESSIONAL
 LAND SURVEYOR

Randall W Smith

OREGON
 JULY 25, 1990
 RANDALL W. SMITH
 2469