

RENEWAL

Monument Set (Procedure and Description)

SET A 1" X 36" IRON PIPE WITH BRASS CAP MARKED AS NOTED. MONUMENT EXTENDS ABOUT 10" ABOVE GROUND

Monument Detail

DOUGLAS COUNTY SURVEYOR

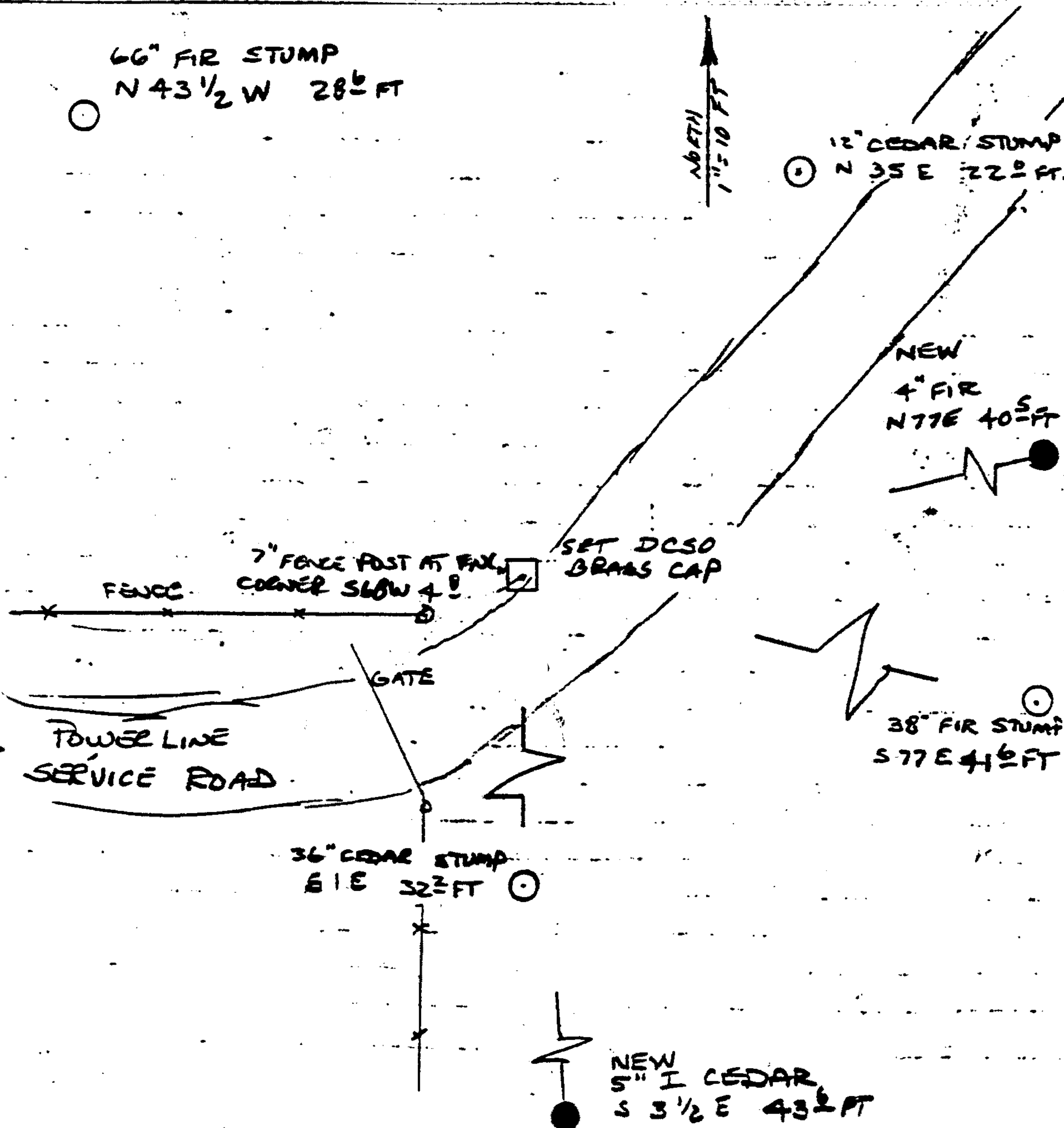
T 22 S R 4 W

S 35 | S 36
S 2 | S 1
T 22 S
1991

New Accessories

- 4" FIR MARKED "X BT" ON DOUBLE GLAZE BEARS N 77° E 40⁵ FT.
- 5" I CEDAR MARKED "X BT" ON DOUBLE GLAZE BEARS S 3 1/2° E 43² FT.
- 7" POST - FENCE CORNER - FENCE RUNS SOUTH E WEST BEARS S 68° W 4² FT.

Sketch of Monument, Accessories, and General Area



Location & Comments

MONUMENT SET ALONG NORTHERLY EDGE OF POWER LINE SERVICE ROAD.

Comp. Declin. 13° EAST
Agency DOUG. CO. SURV. OFF.
Party Chief MONREAN
Notekeeper "
Witnesses T. FRANSEN - S. FLAUS

Address J. BLDG.

Robb.

Surveyor's Seal
REGISTERED
PROFESSIONAL
LAND SURVEYOR

Larry E. Monrean

OREGON
JULY 13, 1979
LARRY E. MONREAN
#1830