

GOVERNMENT CORNER RESTORATION FORM

FILED

Township 27S Range 2W Sec. 12 County DOUGLAS

JUL 2 1991

State OR Date 7/1/91

No. _____

COUNTY SURVEYOR
DOUGLAS COUNTY, OREGON

Corner Designation

ONLY
1/4 S12 | S7

- Condition Report Only
- Not Found
- Renewed
- Unrecorded
- Surveyed In
- Referenced Out

Previous Renewals # 150 T27-2 # 126 T27-1

Monument(s) Found: (Condition and Source)

A 2 1/2" DIA BRASS CAP ON A
1 1/4" O.D. IRON PIPE LEANING
SOUTH OF PLUMB PROTRUDES 12"
ABOVE GROUND

T 27 S

1/4 S12 / R2W

1974

OLS 536

Accessories Found:

- 12" NOW 16" DIA D. FIR. WITH A FULLY HEALED SINGLE
BLAZE BEARS N40W, 18.6 FT (REC. N49W, 19.0 FT. DIST.
IS A SLOPE MEASUREMENT) REN #150
- 6" NOW 9" DIA D. FIR WITH A FULLY HEALED SINGLE
BLAZE BEARS S49W, 46.8 FT (REC. S49W, 44.8 FT)
REN #150

257, T27-2 ✓
201, T27-1 ✓

C.S. File No. 64/17-1 C

RENEWAL

Monument Set (Procedure and Description)

Monument Detail

BC/IP RETURNED TO PLUMB POSITION,
PROTRUDES 2 IN ABOVE A 2 FT
DIA. MOUND OF STONE.

N/A

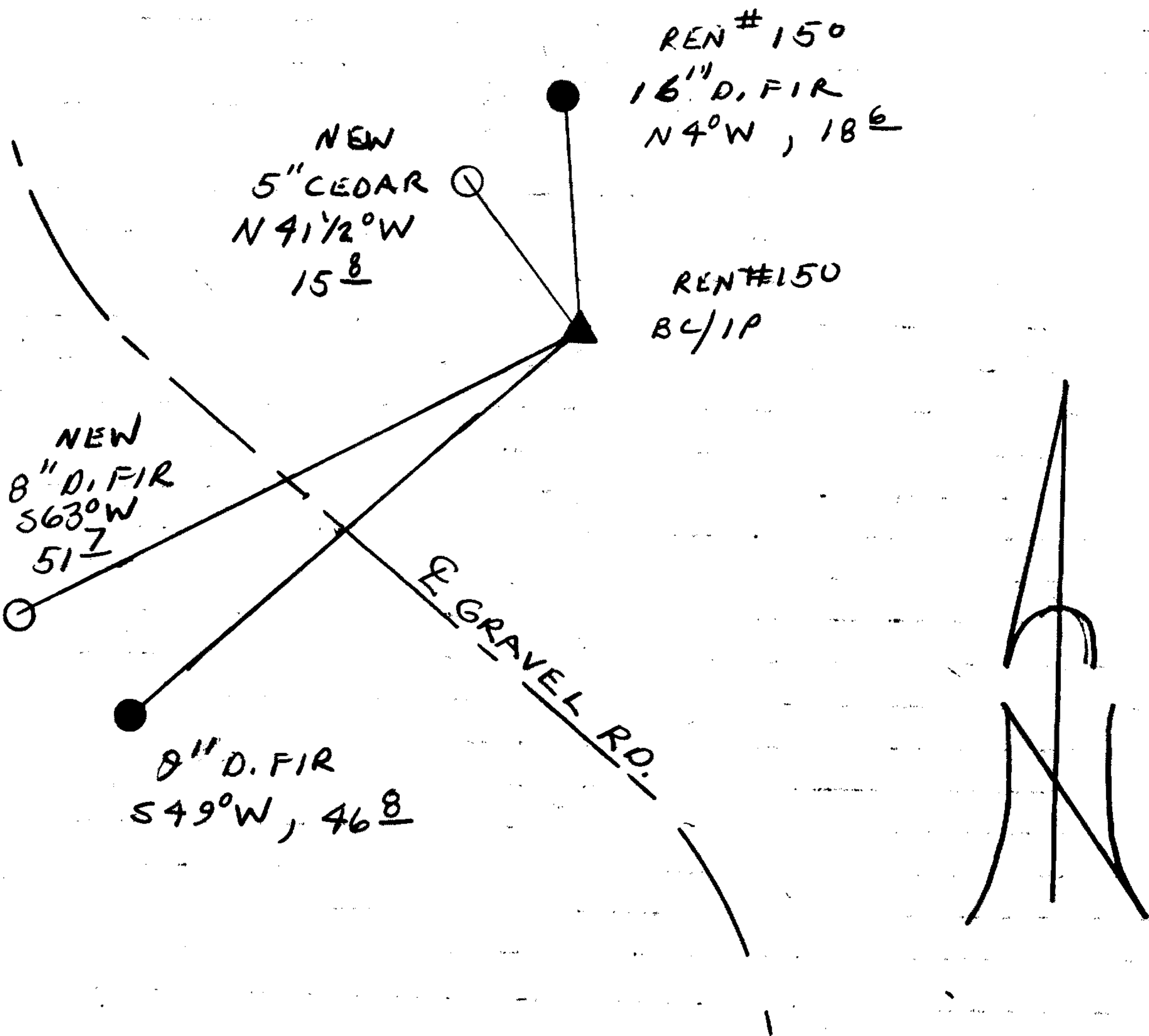
New Accessories

5" DIA CEDAR DOUBLE BLAZED AND SCRIBED "14512 CS BT"
BEARS N 41 1/2° W, 15.8 FT

8" DIA D. FIR DOUBLE BLAZED AND SCRIBED "14512 CS BT"
BEARS S 63° W, 51.7 FT.

Sketch of Monument, Accessories, and General Area

Location & Comments



BC/IP IS IN A CUT
BANK ON THE NORTH
SIDE OF A GRAVEL
ROAD, 25 FT FROM
CL.

Comp. Declin. 18° E
Agency DCSO
Party Chief RANDALL W SMITH
Notekeeper Randall W Smith
Witnesses TERRIE FRANSSEN

Address

Surveyor's Seal
REGISTERED
PROFESSIONAL
LAND SURVEYOR

Randall W Smith

OREGON
JULY 25, 1990
RANDALL W. SMITH
2469