

GOVERNMENT CORNER RESTORATION FORM

FILED

jh

Township 30S Range 6W Sec. 16 County DOUGLAS

JUN 12 1991

State OR Date 5/7/91 No. _____

Corner Designation _____

COUNTY SURVEYOR
DOUGLAS COUNTY, OREGON

517/516
520/521

- Condition Report Only
- Not Found
- Renewed
- Unrecorded
- Surveyed In
- Referenced Out

Previous Renewals #31, #95, 1890 MINERAL SURVEY

MONUMENT DETAIL

Monument(s) Found: (Condition and Source)

A 2 1/2" DIA BRASS CAP ON
A 1 1/2" O.D. IRON PIPE PROTRUDING
3" ABOVE GROUND (REN #95)

T30S R6W

IRON TRAIN RAIL PROTRUDES
4" ABOVE GROUND BEARS S 8° E,
1.6 FT (REN #31)

17/16
20/21

2880 1957

Accessories Found:

36" NOW 33" DIA, 1/2 FT HIGH PINE STUMP WITH
A BURNT FACE NO SCRIBING VISIBLE, BEARS S 11 1/2° W
22.7 FT (AGREES WITH RECORD FIRST NOTED REN #95 SOURCE UNKNOWN)

18" NOW 21" D.B.H. PINE WITH A FULLY HEALED SINGLE
BLAZE BEARS S 61° E, 81.7 FT (REC S 61° E 83.0 FT
DIST, IS A SLOPE MEASUREMENT) REN #95

8" NOW 28" D.B.H. J. PINE WITH A FULLY HEALED SINGLE
BLAZE BEARS S 78° E, 64.0 FT (AGREES WITH RECORD)
1890 MINERAL SURVEY

15" NOW 24" DIA. FALLEN PINE WITH AN OPENED DOUBLE
BLAZE ILLEGIBLE SCRIBING VISIBLE IN UPPER BLAZE AND
"BT" FOUND IN LOWER BLAZE, EVIDENCE OF ROOTS, BEAR S 25° E,
171.6 FT (AGREES WITH RECORD) ORIG BT

#253 x

RENEWAL

Monument Set (Procedure and Description)

Monument Detail

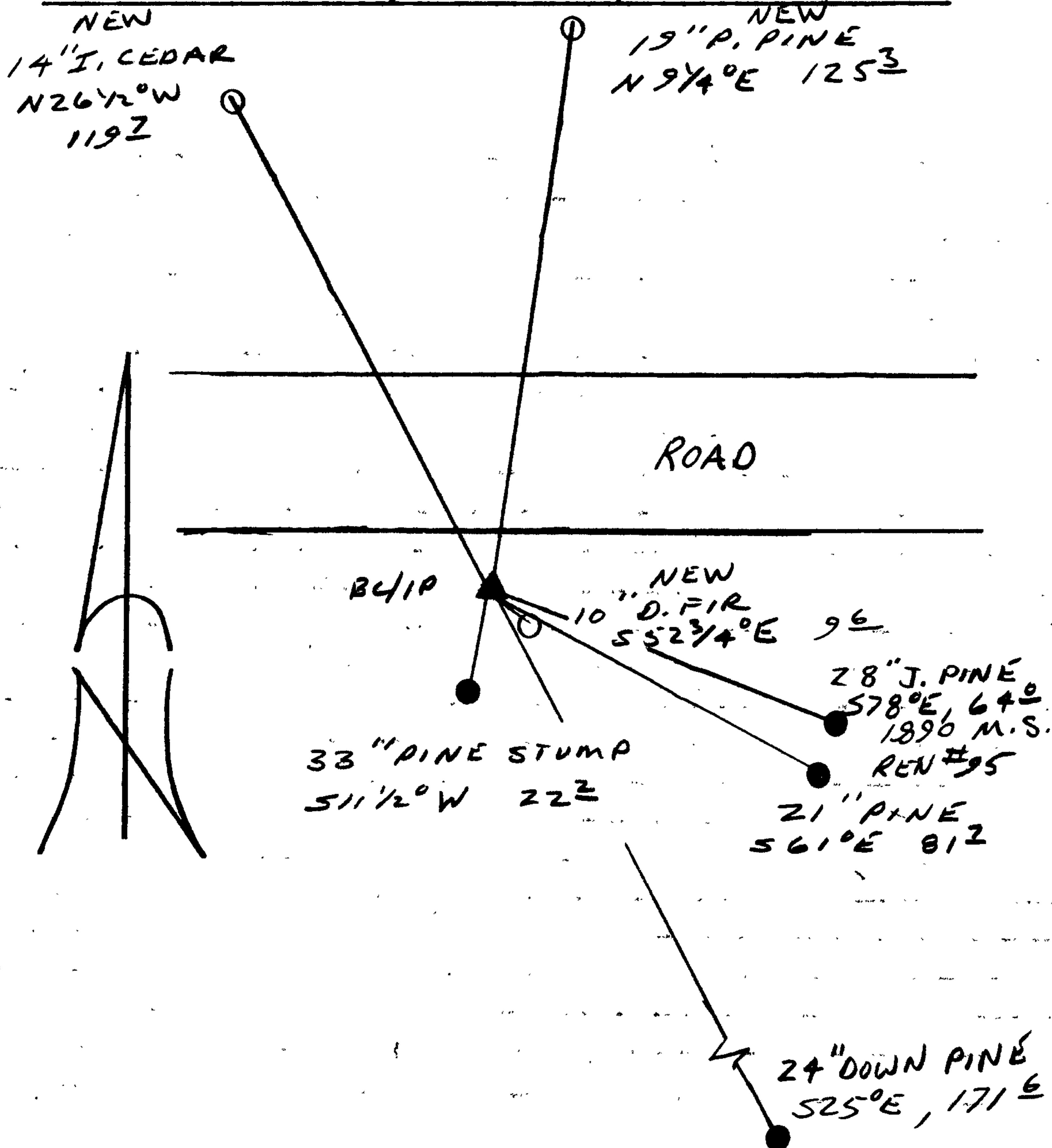
NONE

N/A

New Accessories

- 10" DB.H. D. FIR, DOUBLE BLAZED AND SCRIBED "T30S R6W S21 CS BT" BEARS S52 3/4° E, 9.6 FT
- 19" DB.H. PONDEROSA PINE, DOUBLE BLAZED AND SCRIBED "T30S R6W S16 CS BT" BEARS N 9 1/4° E, 125.3 FT.
- 14" D.B.H. E CEDAR, DOUBLE BLAZED AND SCRIBED "T30S R6W S17 CS BT" BEARS N 26 1/2° W, 119.7 FT.

Sketch of Monument, Accessories, and General Area



Location & Comments

Comp. Declin. 18° E
 Agency DCSO
 Party Chief RANDALL W SMITH
 Notekeeper Randall W Smith
 Witnesses STEPHEN J FLAUSE
TERRIE FRASSEN

Address

Surveyor's Seal

REGISTERED
PROFESSIONAL
LAND SURVEYOR

Randall W Smith

OREGON
JULY 25, 1990
RANDALL W. SMITH
2489