

GOVERNMENT CORNER RESTORATION FORM

Township 29 S Range 9 W Sec. _____ County DOUGLAS ^{COOS COUNTY LINE}

State OREGON Date 6-3-91 No. _____

Corner Designation

S 28	S 27
S 33	S 34

- _____ Condition Report Only
- _____ Not Found
- Renewed
- _____ Unrecorded
- _____ Surveyed In
- _____ Referenced Out

Previous Renewals 1907 RESURVEY, 1957 J. BYRON RENEWAL (DCSO #32) ^{1981 TOROCK SURVEY} MONUMENT DETAIL

Monument(s) Found: (Condition and Source)
 ORIGINAL POST NOT FOUND. FOUND A 2" X 3" X 2' POST WITH FAINT SCRIBE MARKS LYING LOOSE ON TOP OF GROUND. FOUND 1957 J. BYRON MONUMENT A 1" X 36" IRON PIPE WITH BRASS CAP MARKED AS NOTED. MONUMENT IS LEANING NORTHEASTERLY. WE FIND AND USE A WOODEN HUB LOCATED AT THE PROBABLE PLUMB POSITION OF MONUMENT TO MEASURE TO ACCESSORIES FOUND.

DOUGLAS COUNTY SURVEYORS OFFICE
 T 29 S R 9 W

C	28	27
S	33	34

 1957

Accessories Found:

- ORIGINAL 24" FIR NOW A 5' DIAM. DECAYED STUMP WITH FRAGMENTARY REVERSE SCRIBING IN PREVIOUSLY OPEN GLAZE BEARS N 66 1/2° W 27.5 FEET. (REC. N 78° W 27' FEET)
- ORIGINAL 12" FIR NOW A 36" DIAM. STUMP APPROX. 10' HIGH WITH BARK SCRIBING "29 S R 9 W 3" VISIBLE AND WELL HEALED. LOWER GLAZE BEARS S 73° E 114.1 FEET.
- 1907 RESURVEY 10" NOW 20" MAPLE WITH WELL HEALED SINGLE GLAZE BEARS N 57 1/2° E 150 FT (REC. N 80° E 139 FT.)
- BYRON 1957 10" NOW 20" HEMLOCK WITH WELL HEALED SINGLE GLAZE BEARS S 59° E (REC. S 57° E) 38 1/2 FT.
- BYRON 1957 14" NOW 20" MAPLE WITH WELL HEALED SINGLE GLAZE BEARS S 54 1/2° W 24° FT.
- BYRON 1957 15" NOW 37" FIR WITH WELL HEALED SINGLE GLAZE BEARS N 53 1/2° W 54 1/2 FT. (REC. N 54° W 54 1/2 FT.)

ESTIMATED
 NOTE: ALL MEASUREMENTS TAKEN TO CENTER OF ROOT CROWN OF BT'S.

FILED

DOUGLAS COUNTY

#100 X

C.S. File No. 64/15-9 C

RENEWAL

Monument Detail

Monument Set (Procedure and Description)

WE REMOVE BYRON'S BRASS CAP MONUMENT AND SET A 5/8" X 30" IRON ROD WITH ALUMINUM CAP AT PLUMB POSITION OF MONUMENT (AS MARKED BY WOODEN HUB) CAP ALUMINUM CAP IS MARKED DOUGLAS CO. SURVEYOR.

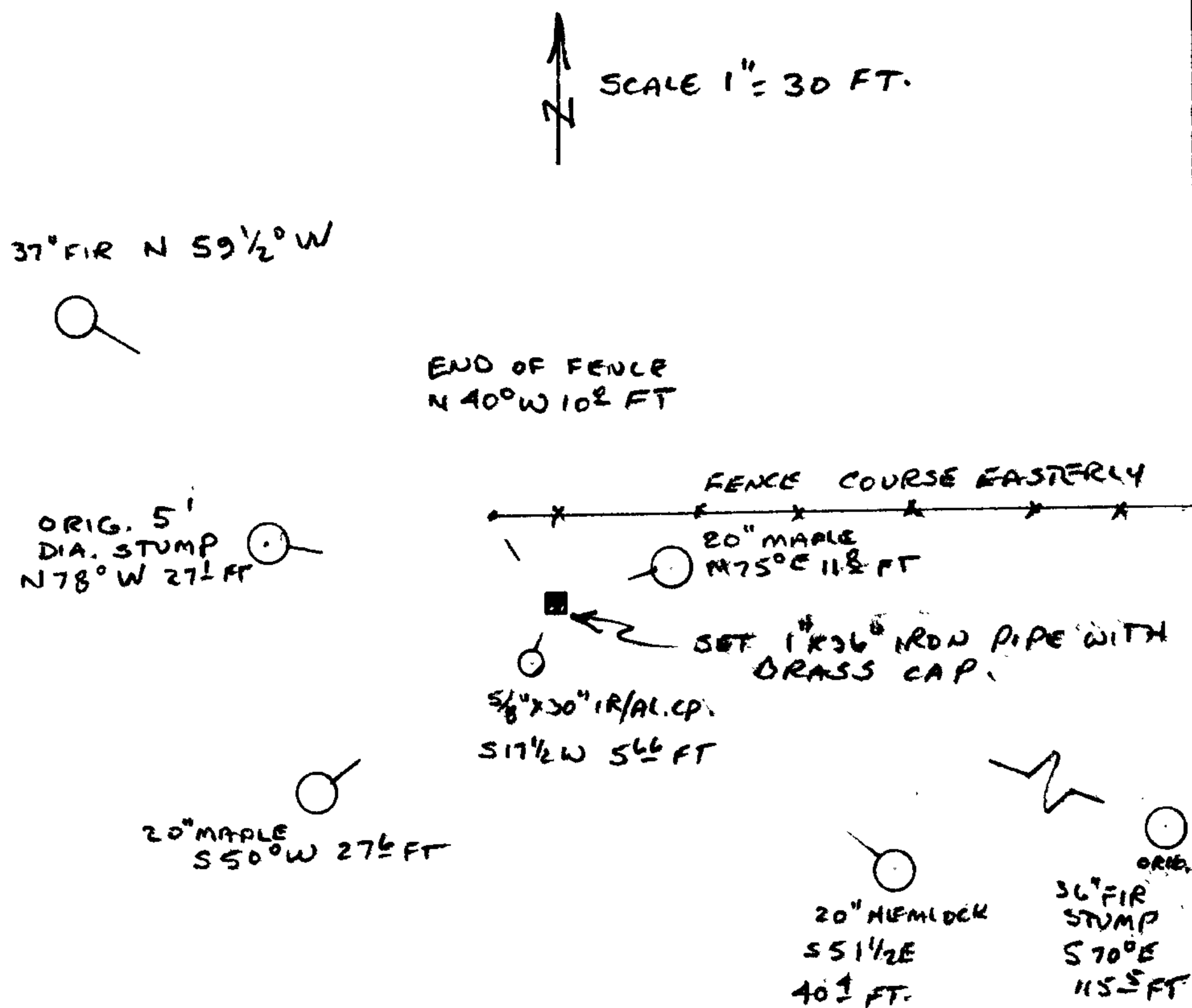
WE RESET THE BRASS CAP MONUMENT AT LOCATION AGREEING WITH ORIGINAL BEARINGS AND DISTANCES TO ORIGINAL BEARING TREES. MONUMENT IS SET WITH 7" ABOVE GROUND. WE STAMP THE ADDITIONAL WORDING "RESET 1991" ON CAP. FROM THIS MONUMENT THE OLD LOCATION AS MARKED BY IRON ROD & ALUMINUM CAP BEARS S 17 1/2° W 5 5/8 FEET.

N/A

New Accessories

- ORIGINAL 5' DIAM. STUMP BEARS N 78° W 27 1/2 FT.
- ORIGINAL 36" FIR STUMP BEARS S 70° E 115 5/8 FT.
- 1907 RESURVEY 20" MAPLE BEARS N 75° E 11 8/8 FT.
- BYRON'S 1957 20" HEMLOCK BEARS S 51 1/2° E 40 1/4 FT.
- BYRON'S 1957 20" MAPLE BEARS S 50° W 27 5/8 FT.
- BYRON'S 1957 37" FIR BEARS N 59 1/2° W 52 1/4 FT.

Sketch of Monument, Accessories, and General Area



Location & Comments

Comp. Declin. 18° EAST
 Agency DOUGLAS COUNTY SURVEYOR'S OFFICE
 Party Chief LARRY E. MONREAN
 Notekeeper " " "
 Witnesses RANDALL SMITH

Address

Surveyor's Seal

REGISTERED
 PROFESSIONAL
 LAND SURVEYOR

Larry E. Monrean

OREGON
 JULY 13, 1979
 LARRY E. MONREAN
 #1230

CS FILE FOLDER

CONTAINS

MORE

INFORMATION