

GOVERNMENT CORNER RESTORATION FORM

FILED

jh

Township 22S Range 6W Sec. 25 County DOUGLAS

MAY 28 1991

State OREGON Date MAY 10, 1991 No. _____

COUNTY SURVEYOR
DOUGLAS COUNTY, OREGON

Corner Designation

$\frac{1}{4} \frac{25}{36}$

Condition Report Only
Not Found
 Renewed
Unrecorded
Surveyed In
Referenced Out

Previous Renewals #55, #142

MONUMENT DETAIL

Monument(s) Found: (Condition and Source)

DOUGLAS CO SURVEYOR

$\frac{1}{4} \frac{525}{536}$

1982

A 1/2 INCH I.D. IRON PIPE APPROX. 30 INCHES LONG, FIRMLY SET BUT TOP IS BENT APPROX 4 INCHES SOUTHERLY FROM PLUMB. PIPE PROTRUDES APPROX 1/2 INCH ABOVE GROUND. A 1/2 INCH IRON PIPE MONUMENT IS FIRST NOTED IN RENEWAL #52; ORIGIN IS UNKNOWN.

A 2 1/2 INCH DIAMETER BRASS CAP (MARKED AS AT RIGHT) ON A 1 3/8 INCH OD 32 INCH LONG GALVANIZED IRON PIPE WAS FOUND OUT OF POSITION, AND LOOSE ON GROUND SURFACE, BY PROPERTY OWNER DUDLEY WALTON. A 3/8 DIAMETER 25 INCH LONG ROUND IRON BAR WITH A LOOP ON ONE END IS FOUND LOOSE ON GROUND, DOWN SLOPE FROM ABOVE IRON PIPE. B.C. MONUMENT AND IRON BAR ARE FROM RENEWAL #142.

Accessories Found:

MEASURED FROM PLUMB POSITION OF FOUND 1/2 INCH IRON PIPE.

NO EVIDENCE OF ORIGINAL BEARING TREES IS FOUND. CLEARING OF FIELD AND ROAD WORK HAS REMOVED PREVIOUSLY FOUND NORTH EAST ORIGINAL BEARING TREE.

FROM RENEWAL #55 TWO BEARING TREES ARE FOUND. A 26" BLACK OAK NOW A 41 INCH D.B.H. BLACK OAK WITH A FULLY HEALED DOUBLE BLAZE BEARS S70°E, 223 3/4 FEET DISTANT (AGREES WITH RECORD BEARING AND DISTANCE IN RENEWAL #142.)

A 15" BLACK OAK NOW 31 INCH D.B.H. BLACK OAK WITH A FULLY HEALED DOUBLE BLAZE BEARS N81 1/2°E, 218 3/4 FEET DISTANT (AGREES WITH RECORD B. AND D. IN RENEWAL #142.)

FROM RENEWAL #142 ALL NOTED BEARING TREES ARE FOUND EXCEPT THE NOTED ORIGINAL BT. A 38 INCH CEDAR (NEW B.T. RENEWAL #142) NOW A 49 INCH D.B.H. INCENSE CEDAR WITH A PARTIALLY HEALED DOUBLE BLAZE SHOWING THE PARTIAL SCRIBING "CS BT" BEARS S56 1/2°E, 222 3/4 FEET DISTANT (AS PER RECORD).

#1584

C.S. File No. 64/15-4

RENEWAL

Monument Set (Procedure and Description)

Monument Detail

FOUND 1/2 INCH I.D. IRON PIPES PLUMB POSITION AGREES VERY CLOSELY WITH RECORD BEARINGS AND DISTANCES TO ALL FOUND BEARING TREES; THIS POSITION IS REFERENCED OUT, THE IRON PIPE IS REMOVED, AND THE FOUND BRASS CAP MONUMENT IS PLACED AT THIS REFERENCED LOCATION. THE BRASS CAP IS STAMPED TO READ AS AT RIGHT. THE B.C. MONUMENT IS NOW FIRMLY SET AND PROTRUDES APPROXIMATELY 2 INCHES ABOVE GROUND. THE FOUND IRON PIPE IS PLACED APPROXIMATELY FLUSH WITH GROUND ON THE NORTH EDGE OF THE B.C. MONUMENT. THE FOUND IRON BAR IS SET PROTRUDING APPROX. 18 INCHES ABOVE GROUND ON THE SOUTH EDGE OF THE B.C. MONUMENT.

DOUGLAS CO SURVEYOR

1/4 525
536

RESET 1991

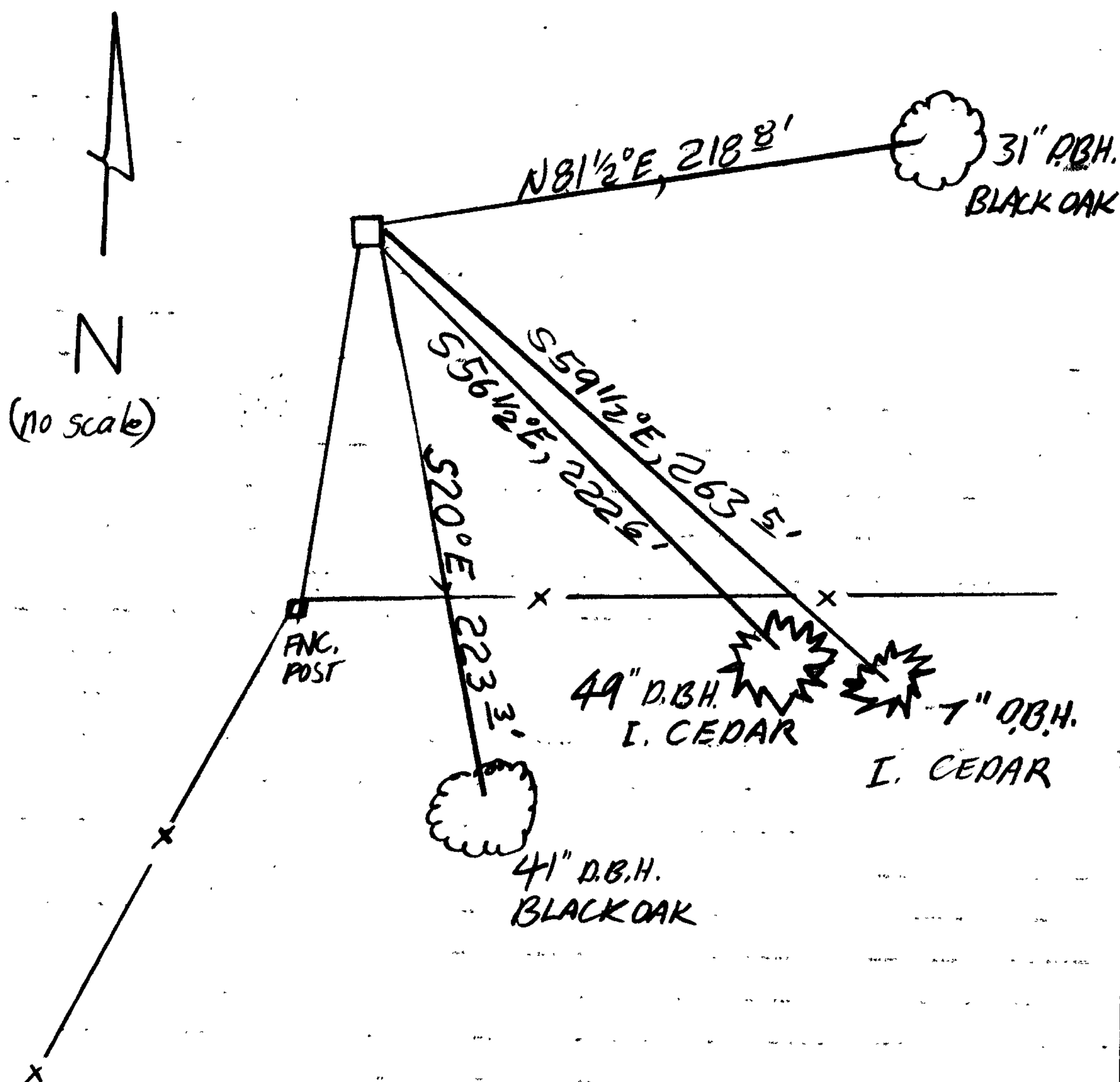
1982

New Accessories

A 7 INCH D.B.H. INCENSE CEDAR SCRIBED "1/4 S36 CS BT" ON A DOUBLE BLAZE BEARS S59 1/2° E, 263 5' FEET DISTANT.

Sketch of Monument, Accessories, and General Area

Location & Comments



MONUMENT LIES IN OPEN PASTURE NEAR A BENCH ON A MODERATE SOUTH FACING SLOPE. THE B.C. MONUMENT IS APPROX. 800 FEET WNW FROM A SMALL HOUSE, BARN, AND CORRAL.

Comp. Declin. 18° E
 Agency DCSD
 Party Chief Stephen John Flaus
 Notekeeper S.J. FLAUS
 Witnesses T. R. FRANAKEN

Address

Surveyor's Seal

REGISTERED
PROFESSIONAL
LAND SURVEYOR

Larry E. Monrean

OREGON
JULY 13, 1979
LARRY E. MONREAN
#1830