

GOVERNMENT CORNER RESTORATION FORM

FILED

JK

Township 30 Range 6W Sec. 33 County DOUGLAS

APR 29 1991

State OR Date 4/24/91 No. _____

COUNTY SURVEYOR
DOUGLAS COUNTY, OR

Corner Designation

SW COR
DLC 49

- Condition Report Only
- Not Found
- Renewed
- Unrecorded
- Surveyed In
- Referenced Out

Previous Renewals #2, #58, #150, #199

Monument(s) Found: (Condition and Source)

MONUMENT DETAIL

FD TWO I.P.'S AT CORNER, A
 1" D.D. I.P. (REN #58) AND A
 1 1/2" D.D. I.P. (REN #199) WITH
 BRASS CAP CUT OFF BY FIELD
 CUTTING. BOTH I.P. BENT DOWN
 TO GROUND. I.P.'S ARE NEXT TO
 EACH OTHER, PLUMB POSITION OF
 1 1/2" D.D. I.P. CHECKS WELL WITH
 ACCESSORIES

N/A

Accessories Found:

6" NOW 20" DIA DEAD FALLEN ON FACE B. OAK
 BEARS N 28 1/2° E, 28.6 FT (AGREES WITH REC) REN #150

5/8" I.P. BEARS N 1° W, 12.0 FT (REC NORTH 12.0 FT)
 FENCE LINE HAS MOVED. REN #199

2484

RENEWAL

Monument Set (Procedure and Description)

Monument Detail

POSITION OF 1 1/2" O.D. IS REFERENCED
 A 2 3/8" DIA. DCSO BRASS CAP AND A
 1/4" O.D. X 32" LONG I.P. IS SET
 AT REFERENCED POSITION. DCSO BC/IP
 IS SET 5" BELOW GROUND WITH
 1" I.D. X 34" LONG I.P. AND 1 1/2" O.D.
 X 26" LONG I.P. SET
 ALONG NORTH EDGE OF BC/IP 5"
 BELOW GROUND.

DOUGLAS COUNTY SURVEYORS

T 30 S

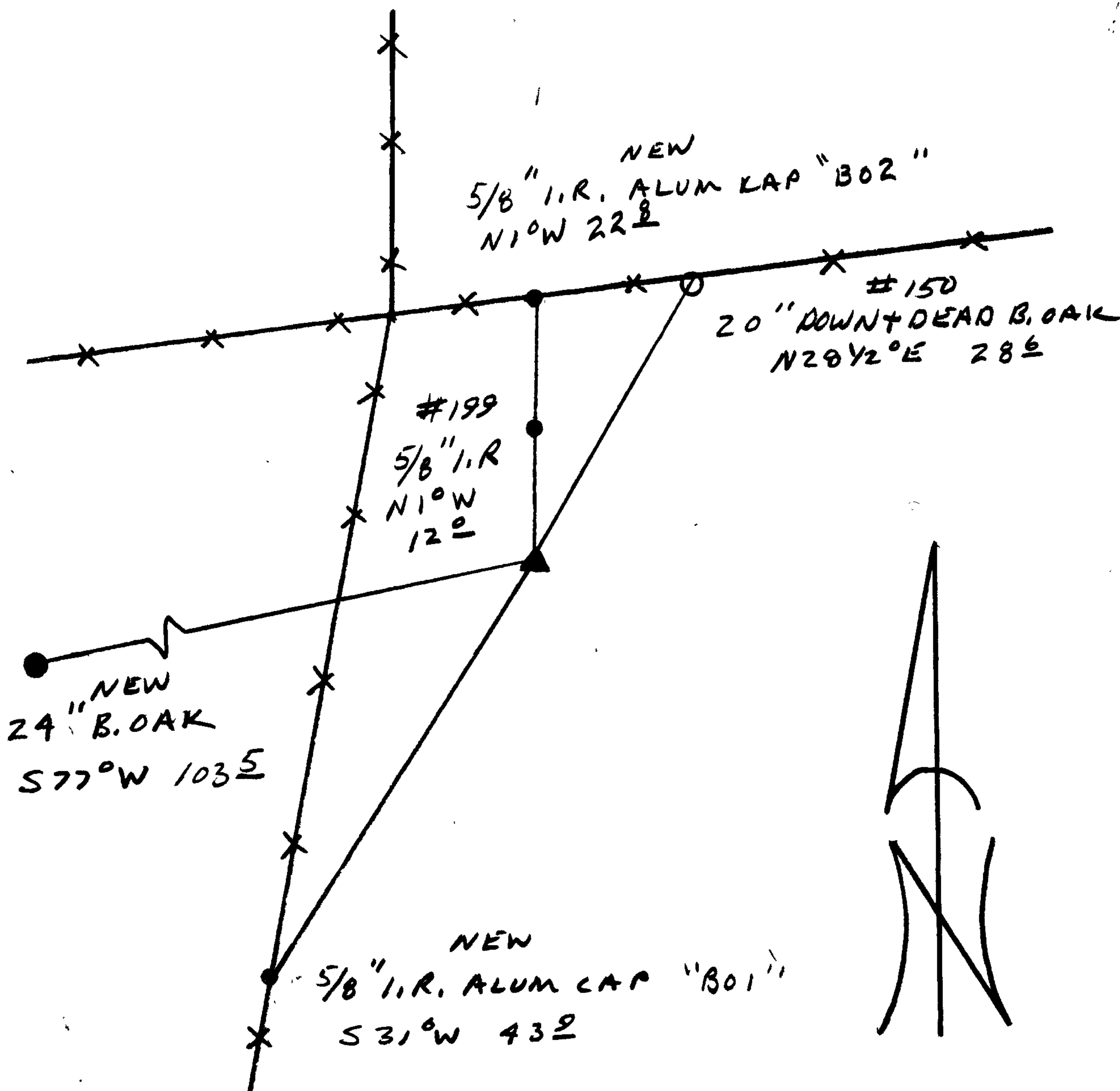
SW	DLC	R
COR	49	6
		W

1991
OFFICE

New Accessories

24" DIA. B. OAK DOUBLE BLAZED AND SCRIBED "SW DLC 49 CS BT"
 BEARS S 77° W, 103.5 FT
 5/8" I.R. WITH DCSO ALUM. CAP STAMPED "B02" PROTRUDES 8" ABOVE
 GROUND IN AN EASTERLY FENCE LINE, BEARS N 1° W, 22.8 FT
 5/8" I.R. WITH DCSO ALUM. CAP STAMPED "B01" PROTRUDES 10" ABOVE
 GROUND IN A SOUTHERLY FENCE LINE BEARS S 31° W, 43.9 FT

Sketch of Monument, Accessories, and General Area



Location & Comments

CORNER IS IN AN OPEN
 FIELD, A FOUR WAY
 FENCE CORNER BEARS
 N 32° W, 25 FT.

Comp. Declin. 18° E
 Agency DCSO
 Party Chief RANDALL W SMITH
 Notekeeper *Randall W Smith*
 Witnesses STEPHEN J FLAISE

Address

REGISTERED Surveyor's Seal
 PROFESSIONAL
 LAND SURVEYOR

Randall W Smith

OREGON
 JULY 25, 1990
 RANDALL W. SMITH
 2469