

GOVERNMENT CORNER RESTORATION FORM

FILED

Township 30 S Range 6W Sec. 27 County DOUGLAS

JK

APR 29 1991

State OR Date 4/24/91 No. _____

Corner Designation

COUNTY SURVEYOR
DOUGLAS COUNTY, OR

S28 | S27
S33 | S34

- Condition Report Only
- Not Found
- Renewed
- Unrecorded
- Surveyed In
- Referenced Out

Previous Renewals #10, #164

Monument(s) Found: (Condition and Source)

A 2 1/2" DIA. DCSO BRASS CAP ON AN 1 1/2" O.D BY 36" LONG IRON PIPE. TIPPED OVER, FLANGES STILL IN GROUND, GOOD FOR POSITION. (REN #164)

DOUGLAS COUNTY SURVEYORS

T 30 S

S28 | S27
S33 | S34

R6W

1963

OFFICE

Accessories Found:

12" NOW 25" DIA W. OAK WITH A FULLY HEALED DOUBLE BLAZE, BEARS N19°W, 92.6 FT (AGREES WITH REC.) REN #10

8" NOW 14" DIA. ASH WITH A PREVIOUSLY OPENED BLAZE ILLEGIBLE SCRIBE MARKS VISIBLE, BEARS N21°E, 62.0 FT (AGREES WITH REC.) REN #10

8" NOW 13" DIA, 9" HIGH BROKEN ASH STUMP NO BLAZES OR SCRIBING VISIBLE, BEARS S29 1/4°W, 264.0 FT (AGREES WITH REC.) REN #10

NO OTHER BT'S FOUND.

#249 +

64/13-26

RENEWAL

Monument Set (Procedure and Description)

POSITION OF FLANG'S REFERENCED,
 BC/IP REMOVED AND STRAIGHTENED.
 BC/IP RETURNED TO REFERENCED
 POSITION, NOW PROTRUDES 2" ABOVE
 GROUND. MARKS "RESET 1991" ARE
 ADDED TO BRASS CAP.

Monument Detail

DOUGLAS COUNTY SURVEYORS
 T305

528/527
 533/534

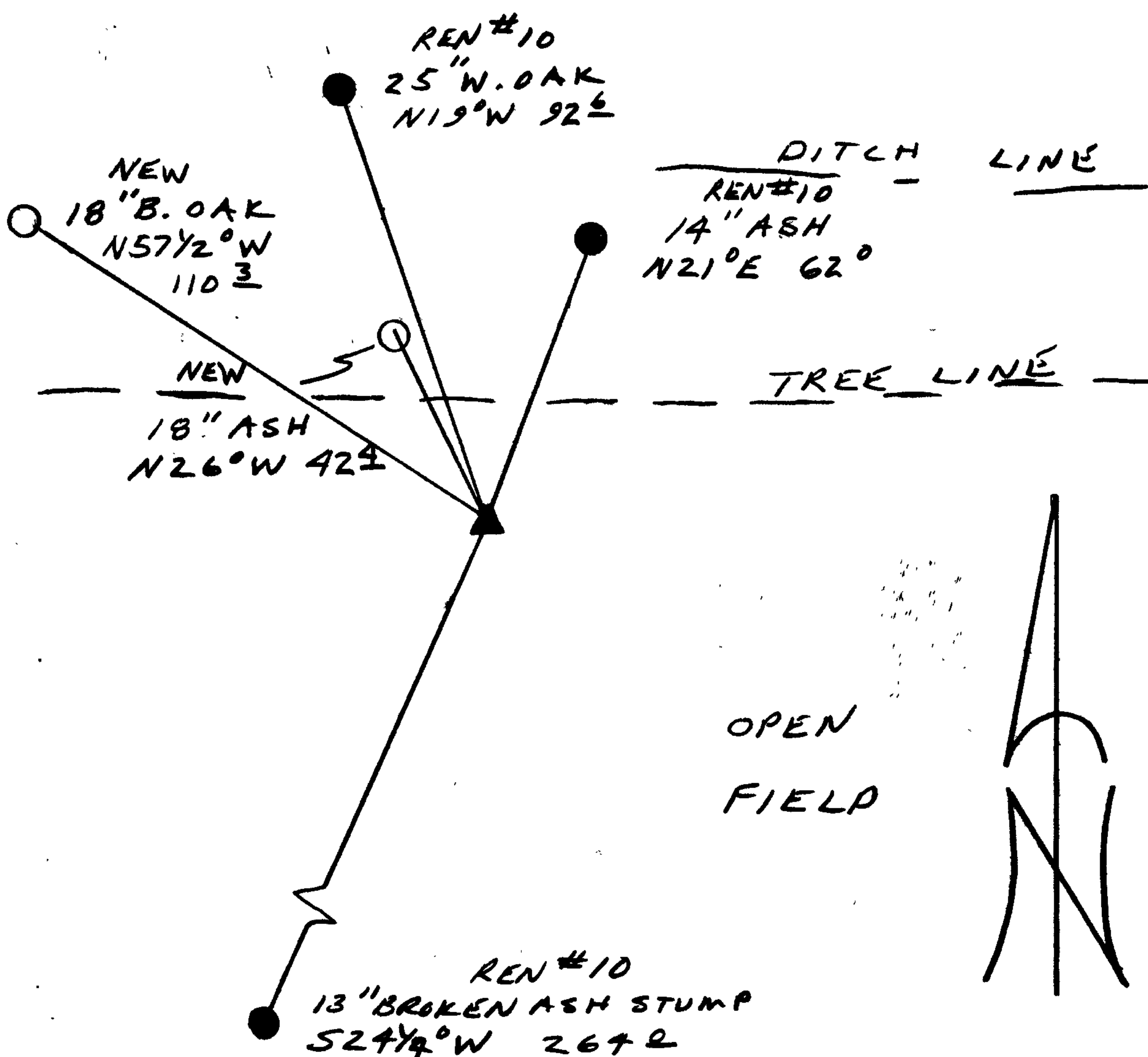
RESET 1991
 R6W
 1963
 OFFICE

New Accessories

18" DIA. B. OAK DOUBLE BLAZED AND SCRIBED "T305 R6W S28 CS BT"
 ON NORTHEASTERLY TRUNK, BEARS N57 1/2° W, 110.3 FT TO CENTER OF
 SCRIBED TRUNK AT BASE.

18" DIA. ASH DOUBLE BLAZED AND SCRIBED "T305 R6W S28 CS BT"
 ON SOUTHEASTERLY TRUNK, BEARS N26° W, 42.4 FT TO CENTER OF
 SCRIBED TRUNK AT BASE.

Sketch of Monument, Accessories, and General Area



Location & Comments

NO REASONABLE TREES
 TO THE SOUTH.

Comp. Declin. 18° E
 Agency DCSO
 Party Chief RANDALL W SMITH
 Notekeeper Randall W Smith
 Witnesses STEPHEN J FLAUSE
TERRIE PRANSSEN

Address

REGISTERED Surveyor's Seal
 PROFESSIONAL
 LAND SURVEYOR

Randall W Smith

OREGON
 JULY 25, 1990
 RANDALL W. SMITH
 2469