

GOVERNMENT CORNER RESTORATION FORM

FILED

Township T23S Range RTW Sec. 31 County DOUGLAS

APR 19 1991

State OREGON Date 4/18/91 No. _____

Corner Designation

COUNTY SURVEYOR
DOUGLAS COUNTY, ORE

C
| 1/4 31
C

- Condition Report Only
- Not Found
- Renewed
- Unrecorded
- Surveyed In
- Referenced Out

Previous Renewals #161 ESTABLISHED MAP M 90-38 A & B

MONUMENT DETAIL

Monument(s) Found: (Condition and Source)

FOUND A 2 1/2 INCH BRASS CAP (MARKED AS AT RIGHT) ON A 1 7/8 INCH O.D. 36 INCH LONG IRON PIPE OUT OF GROUND AND LEANING AGAINST THE NORTHWEST BEARING TREE.

T23S PLS 839 RTW

A 1/2 INCH DIAMETER 60 INCH LONG IRON ROD LOOSELY SET AND LEANING NORTHERLY PROTRUDES 28 INCHES ABOVE GROUND

C
| 1/4
C 31

1983

A BROKEN PIECE OF CONCRETE COLLAR IS BURIED IN LOOSE GROUND FOUND AROUND BASE OF IRON ROD.

Accessories Found:

TWO BEARING TREES DESCRIBED ON MAP M 90-38 A & B ARE FOUND.

AN 18" FIR NOW A 18 INCH D.B.H. DOUGLAS FIR SCRIBED "C 1/4 S 31 BT ON A PARTIALLY HEALED DOUBLE BLAZE BEARS N 47° W, 192 FEET DISTANT (RECORD N 45° W, 190 FT.)

A 14" FIR NOW A 16 INCH D.B.H., 7 FOOT TALL FIR STUMP SCRIBED "C 1/4 S 31 BT ON A PARTIALLY HEALED DOUBLE BLAZE BEARS S 28° W, 29 1/2 FEET DISTANT (RECORD S 30° W, 29 1/2 FT.)

#175 x

C.S. File No. 64/13-23

RENEWAL

Monument Set (Procedure and Description)

Monument Detail

FOUND BRASS CAP MONUMENT IS SET IN GROUND AT INTERSECTING RECORD DISTANCE AS MEASURED FROM CENTER OF ROOT CROWNS OF FOUND B.T.S. MONUMENT IS FIRMLY SET AND PROTRUDES APPROX. 3 INCHES ABOVE GROUND THE BRASS CAP IS FURTHER MARKED TO READ AS AT RIGHT.

T23 S PLS 839 RTW

C 1/4
|
C 31
RESET

1983 1991

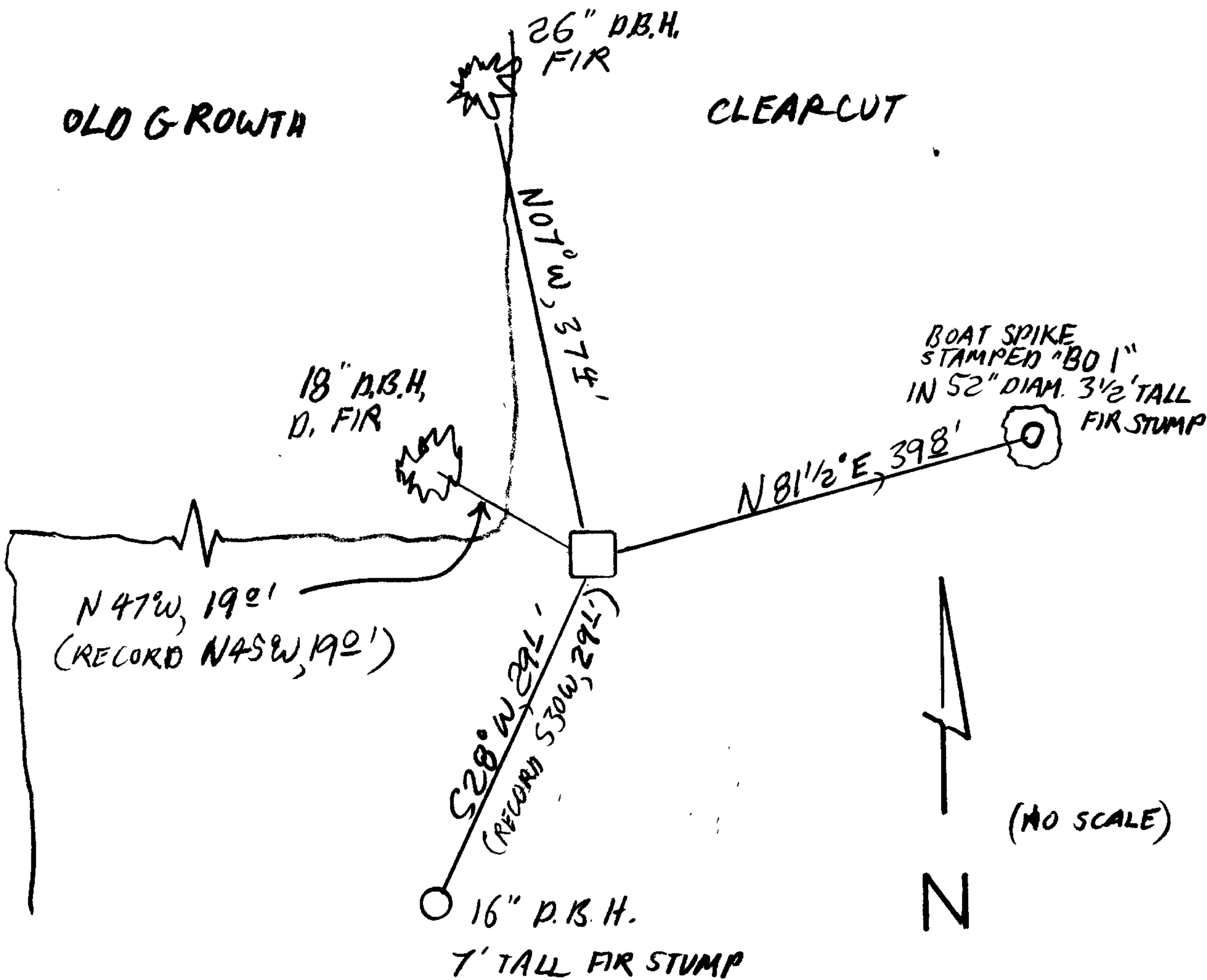
FOUND IRON ROD IS LOOSELY SET ON NORTH EDGE OF ABOVE MON. AND PROTRUDES APPROX. 3 1/2 FEET ABOVE GROUND.

New Accessories

AN 8 INCH LONG BOAT SPIKE WITH A 1/8 INCH DIAMETER TOP STAMPED "B01" IS SET FLUSH IN THE TOP OF A 52 INCH DIAMETER, 3 1/2 FOOT TALL, D. FIR STUMP AND BEARS N 81 1/2 ° E, 39 8 FEET DISTANT.

A 26 INCH D.B.H. FIR SCRIBED "C 1/4 S 31 CS BT" ON A DOUBLE BLAZE BEARS N 07 ° W 37 4 FEET DISTANT.

Sketch of Monument, Accessories, and General Area



Location & Comments

MONUMENT LAYS 600 ± FEET NORTH FROM THE END OF BLM RD. # 23-7-6.6 ON A NEARLY FLAT BENCH OF A GRADUAL NORTH-ERLY SLOPE

Comp. Declin. 18 ° E
Agency DCSO
Party Chief *Maple John Flause*
Notekeeper *S.J. FLAUSE*
Witnesses *T. FRANSSSEN*

Address

Surveyor's Seal

REGISTERED PROFESSIONAL LAND SURVEYOR

Larry E. Monrean

OREGON
JULY 13, 1979
LARRY E. MONREAN
#1830