



RENEWAL

Monument Set (Procedure and Description)

ORIG. STONE IS IN GOOD SHAPE,  
GOES INTO GROUND AND GETS  
LARGER, DOES NOT APPEAR TO BE  
EASILY MOVED. WE DID NOT SET  
A BRASS CAP FOR CORNER.

Monument Detail

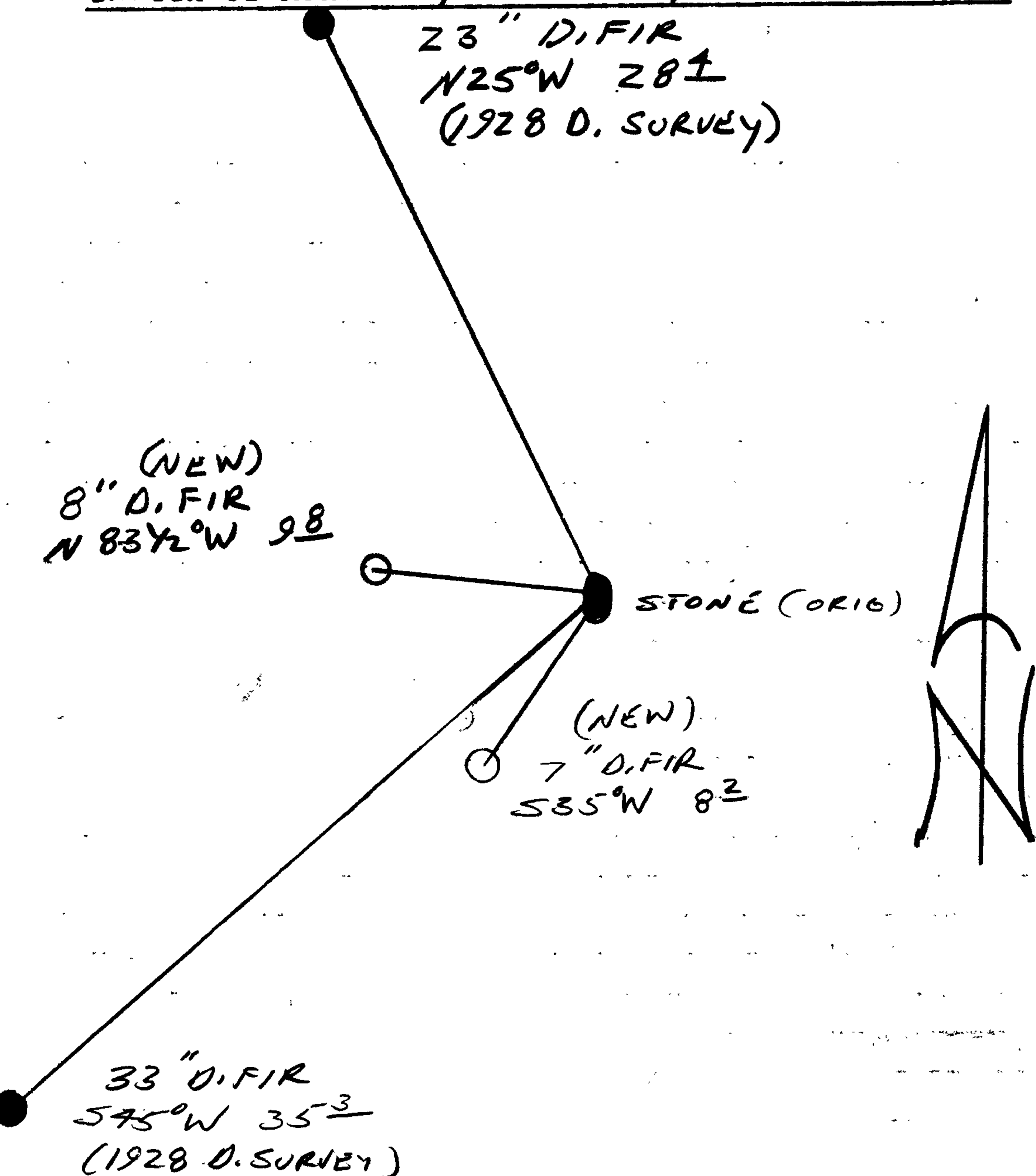
N/A

New Accessories

8" DIA. D. FIR DOUBLE BLAZED AND SCRIBED "1/4 512 CS BT"  
BEARS N 83 1/2° W, 9.8 FT

7" DIA. D. FIR DOUBLE BLAZED AND SCRIBED "1/4 512 CS BT"  
BEARS S 35° W, 8.2 FT.

Sketch of Monument, Accessories, and General Area



Location & Comments

CORNER LIES ON A WESTERLY  
SLOPE

Comp. Declin. 18° E  
Agency DCSG  
Party Chief RANDALL W. SMITH  
Notekeeper Randall W. Smith  
Witnesses STEPHEN J. FLAUSK  
TERRIE FRANSSEN

Address

Surveyor's Seal

REGISTERED  
PROFESSIONAL  
LAND SURVEYOR

*Randall W. Smith*

OREGON  
JULY 25, 1990  
RANDALL W. SMITH  
2469