

GOVERNMENT CORNER RESTORATION FORM **FILED**

Township 30S Range 5W Sec. 1 County DOUGLAS

State OR Date 3/15/91 No. _____

MAR 20 1991

Corner Designation

536
S2 | S1

COUNTY SURVEYOR
DOUGLAS COUNTY, ORE

- Condition Report Only
- Not Found
- Renewed
- Unrecorded
- Surveyed In
- Referenced Out

Previous Renewals 1969 BLM D. SURVEY

Monument(s) Found: (Condition and Source)

A 3 1/4" DIA. BLM BRASS CAP
ON A 2 1/2" O.D. IRON PIPE PROTRUD-
ING 7" ABOVE GROUND. BE/1P
LEANS APPROX 3" NORTHEAST OF
PLUMB. (1969 BLM)

MONUMENT DETAIL

T 29 S R 5 W

536
S2 | S1
SC
T 30 S R 5 W
1969

Accessories Found:

15" NOW 20" DIA D. FIR WITH A FULLY HEALED SINGLE BLAZE
BEARS S 32 1/4° E, 54.8 FT (AGREES WITH REC.)

12" NOW 18" DIA. D. FIR WITH A FULLY HEALED SINGLE BLAZE
BEARS S 74° W, 85.8 FT (AGREES WITH REC.)

RENEWAL

Monument Set (Procedure and Description)

NONE

Monument Detail

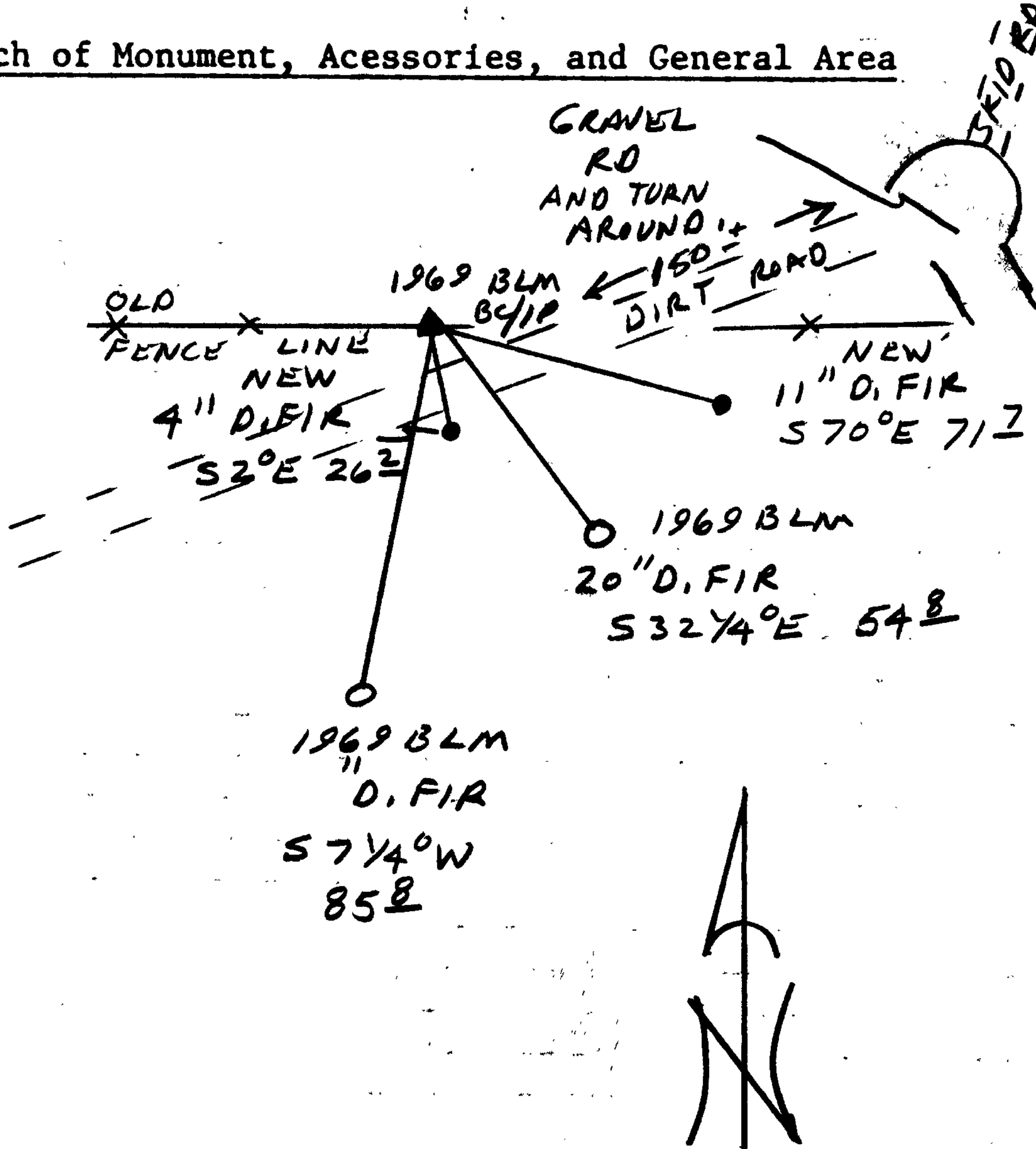
N/A

New Accessories

4" DIA. D. FIR DOUBLE BLAZED AND SCRIBED "X BT" BEARS S2°E, 26.2 FT

11" DIA. D. FIR DOUBLE BLAZED AND SCRIBED "T30S R5W S1 CC C5 BT" BEARS S 70°E, 71.7 FT

Sketch of Monument, Accessories, and General Area



Location & Comments

CORNER 15 ALONG THE NORTH EDGE OF A DIRT ROAD.

Comp. Declin. 18°E
 Agency DCSO
 Party Chief RANDALL W SMITH
 Notekeeper *Randall W Smith*
 Witnesses STEPHEN J. FRAUSE
 TERRIK FRANSSEN

Address

Surveyor's Seal

REGISTERED
 PROFESSIONAL
 LAND SURVEYOR

Randall W Smith

OREGON
 JULY 25, 1990
 RANDALL W. SMITH
 2469