

GOVERNMENT CORNER RESTORATION FORM

FILED

JS
FEB 20 1991

Township 26S Range 7W Sec. 10 County DOUGLAS

State OR Date 2/13/91 No. _____

COUNTY SURVEYOR
DOUGLAS COUNTY, OR

Corner Designation

1/4 S10 | S11

- Condition Report Only
- Not Found
- Renewed
- Unrecorded
- Surveyed In
- Referenced Out

Previous Renewals #43

MONUMENT DETAIL

Monument(s) Found: (Condition and Source)

2 1/2" DIA. DCSSO BRASS CAP
ON A 1/2" O.D. IRON PIPE,
PROTRUDING 10" ABOVE GROUND.

3/4" I.D. I.P. PROTRUDING 12"
ABOVE GROUND IS ALONG
NORTHWEST EDGE OF DCSSO BC/IP

COUNTY SURVEYORS OFFICE

T 26S

1/4 S10 | S11

1960

Accessories Found:

7" NOW 10" DIA. W. OAK WITH A FULLY HEALED DOUBLE
BLAZE, BEARS S46°E, 13.5 FT (AGREES WITH REC) REN #43

18" NOW 26" DIA. W. OAK WITH A FULLY HEALED DOUBLE
BLAZE, BEARS N39°W, 31.0 FT (REC N37°W, 31.0 FT) REN #43

24" DIA. OAK NOW STUMP HOLE, BEARS N35°W, 106.3 FT
ORIG. RT.

#121 X

RENEWAL

Monument Set (Procedure and Description)

NONE

Monument Detail

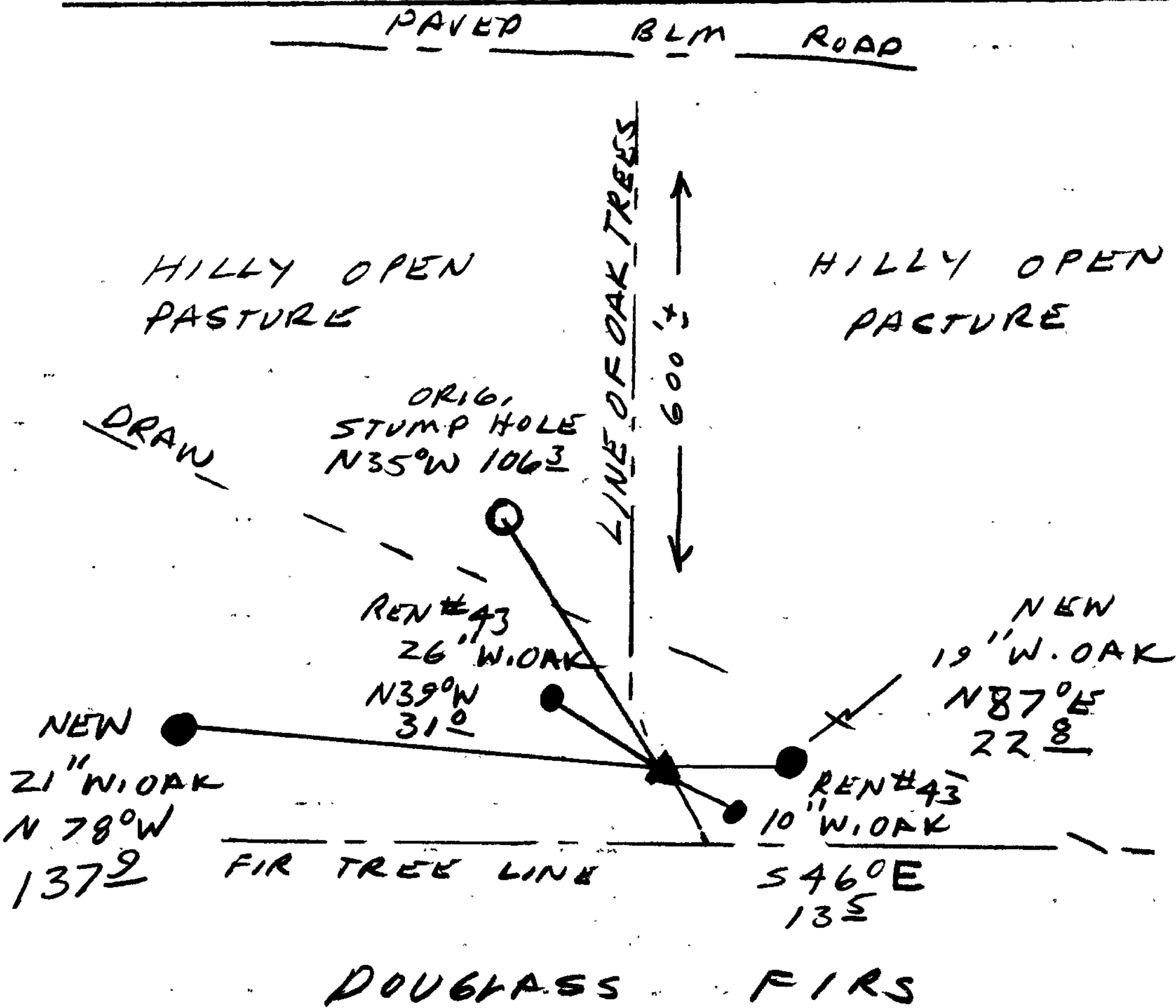
N/A

New Accessories

19" DIA. W. OAK DOUBLE BLAZED AND SCRIBED "YAS 11 CS BT"
BEARS N 87° E, 22.8 FT.

21" DIA. W. OAK DOUBLE BLAZED AND SCRIBED "YAS 10 CS BT"
BEARS N 78° W, 137.9 FT

Sketch of Monument, Accessories, and General Area



Location & Comments

CORNER IS APPROX 600'
SOUTH OF A PAVED BLM
ROAD.

Comp. Declin. 18° E
Agency DCSO
Party Chief RANDALL W SMITH
Notekeeper Randall W Smith
Witnesses STEPHEN J. FLAUSE
TERRIE FRANSSSEN

Address

Surveyor's Seal

REGISTERED
PROFESSIONAL
LAND SURVEYOR

Randall W Smith

OREGON
JULY 25, 1990
RANDALL W. SMITH
2469