

GOVERNMENT CORNER RESTORATION FORM

FILED

Township 25S Range 7W Sec. 15 County DOUGLAS

JAN 30 1991

State OR Date 1/23/91 No. \_\_\_\_\_

COUNTY SURVEYOR  
DOUGLAS COUNTY, OR

Corner Designation

S16	S15
S21	S22

Condition Report Only  
 Not Found  
 Renewed # 148  
 Unrecorded  
 Surveyed In  
 Referenced Out

Previous Renewals 1968 BLM D. RESURVEY

Monument(s) Found; <sup>1968</sup> (Condition and Source)

A 3 1/2" DIA. BLM BRASS CAP ON  
A 2 1/2" O.D. IRON PIPE PROTRUDING  
7" ABOVE GROUND.

U.S. DEPT OF THE INTERIOR

T25S R7W

S16	S15
S21	S22

1968

BUR OF LAND MANAGEMENT

Accessories Found:

ALL BT'S FROM 1968 BLM D. RESURVEY

13" NOW 12" DIA. D.FIR WITH A FULLY HEALED SINGLE  
 BLAZE, BEARS N 62 1/2° E, 19.8 FT (REC. N 77 1/2° E, 14.8 FT  
 BEG. 15A, PROBABLE ERROR IN READING COMPASS).

8" NOW 15" DIA. D.FIR WITH A FULLY HEALED SINGLE BLAZE,  
 BEARS S 32° E, 5.9 FT (AGREES WITH REC.)

10" NOW 19" DIA. D.FIR WITH A FULLY HEALED SINGLE BLAZE,  
 BEARS S 14° W, 19.8 FT (REC. S 12° W 19.8 FT).

15" NOW 22" DIA. D.FIR WITH A FULLY HEALED SINGLE BLAZE,  
 BEARS N 2 3/4° W, 49.8 FT (AGREES WITH REC.)

RENEWAL

Monument Set (Procedure and Description)

NONE

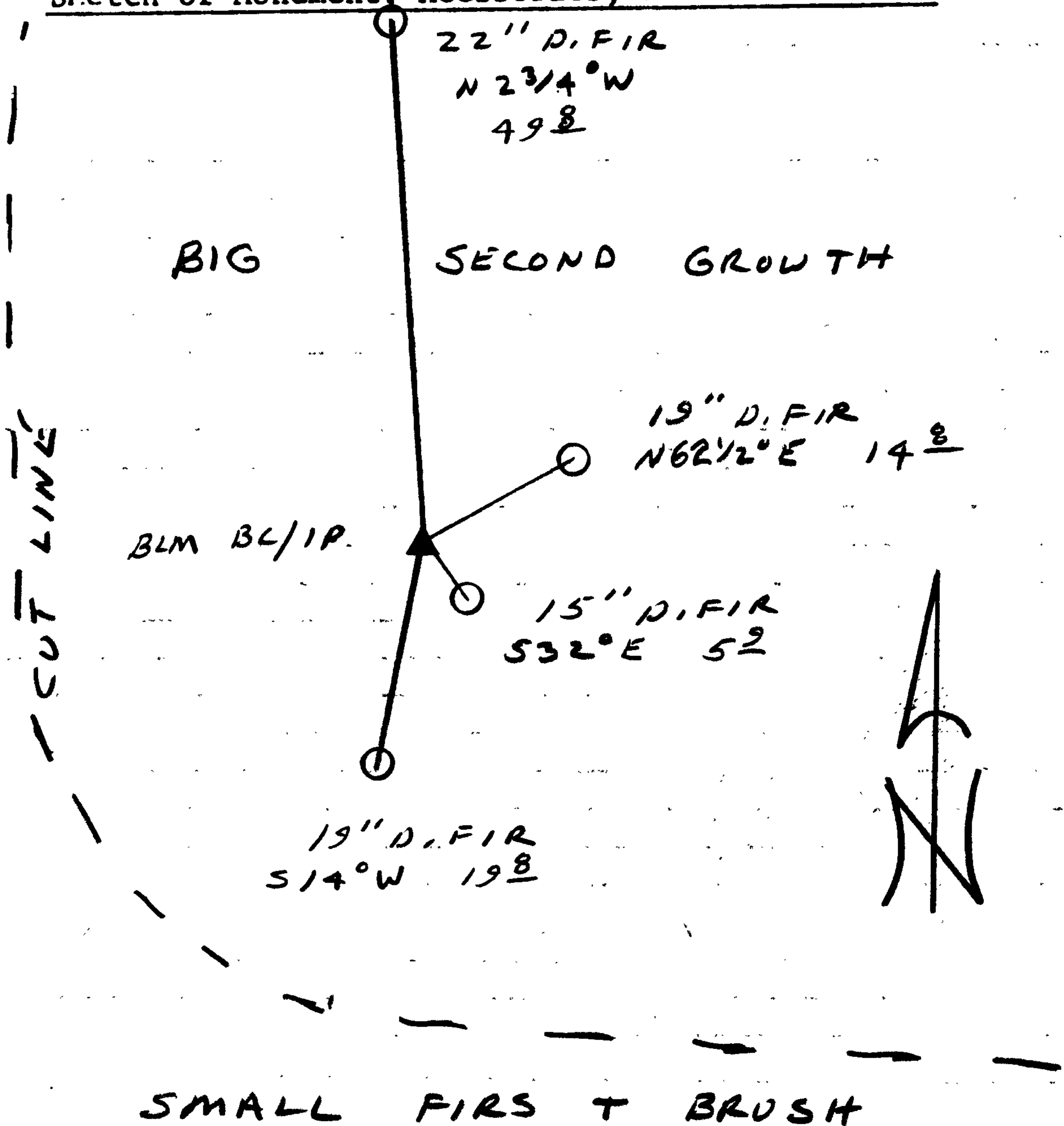
Monument Detail

N/A

New Accessories

NONE

Sketch of Monument, Accessories, and General Area

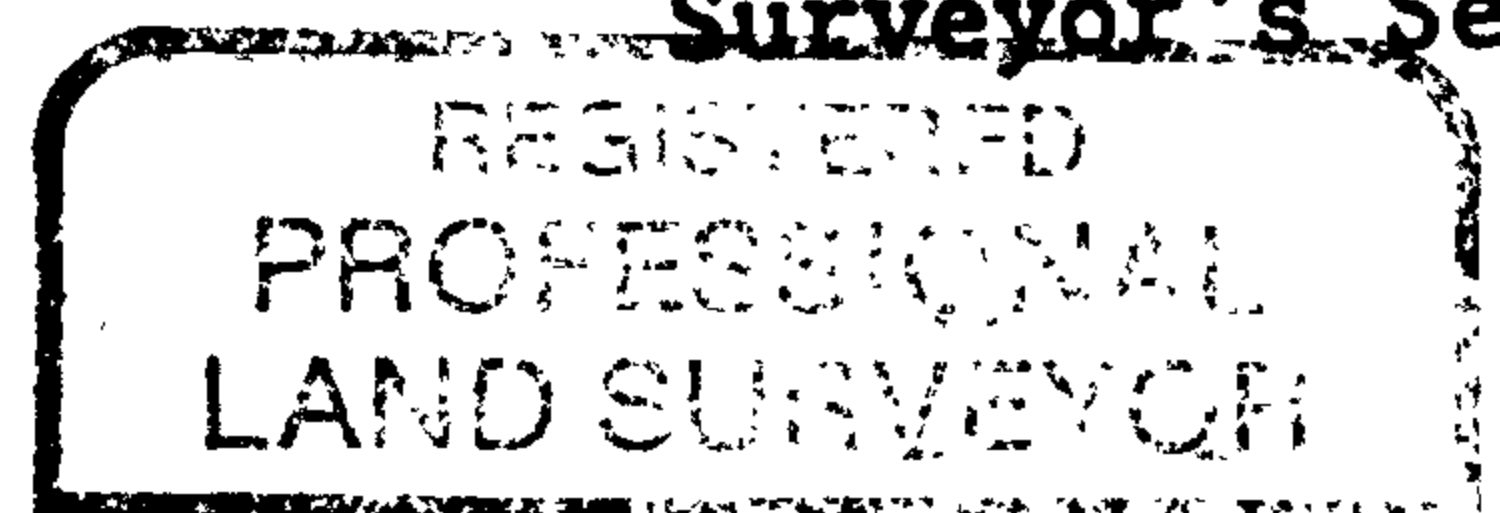


Location & Comments

Comp. Declin. 18° E  
 Agency DCSO  
 Party Chief RANDALL W SMITH  
 Notekeeper Randall W Smith  
 Witnesses STEPHEN J FLAUSE  
TERRIE FRANSON

Address

Surveyor's Seal



*Randall W Smith*

