

RENEWAL

Monument Set (Procedure and Description)

Monument Detail

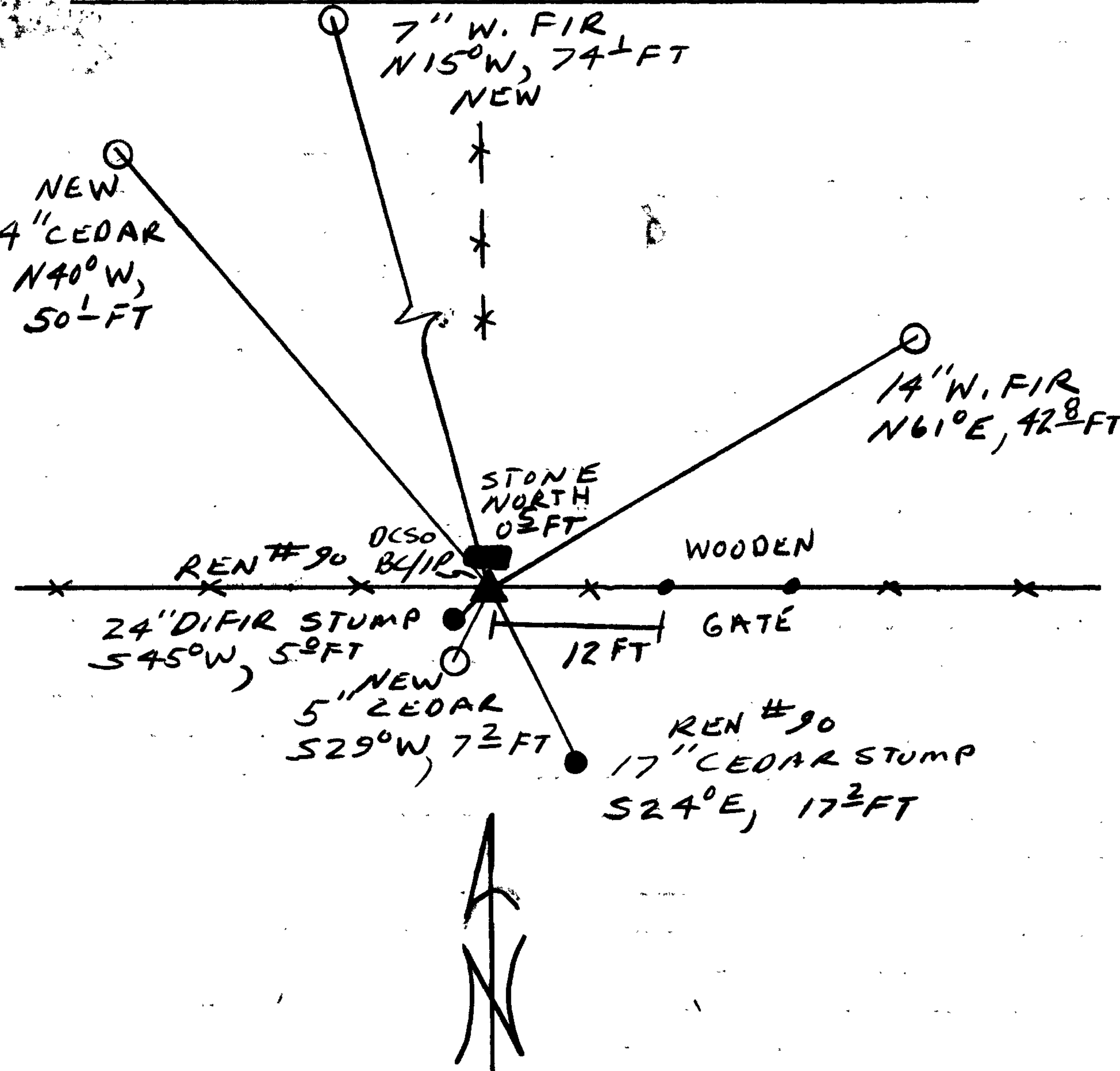
NONE

N/A

New Accessories

- 4" DIA CEDAR DOUBLE BLAZED AND SCRIBED " X BT " BEARS N40°W, 50.1 FT
- 14" DIA W. FIR DOUBLE BLAZED AND SCRIBED " SE DCC 43 CS BT " BEARS N61°E, 42.8 FT
- 7" DIA. W. FIR DOUBLE BLAZED AND SCRIBED " SE DCC 43 CS BT " BEAR N15°W, 74.1 FT
- 5" DIA CEDAR DOUBLE BLAZE AND SCRIBED " SE DCC 43 CS BT " BEAR S29°W, 7.2 FT

Sketch of Monument, Accessories, and General Area



Location & Comments

CORNER LIES IN AN EAST-WEST FENCE LINE REMNANTS OF A NORTHERLY RUNNING FENCE ARE FOUND NORTH OF CORNER

CORNER IS WEST 12 FT FROM WOODEN GATE IN EAST-WEST FENCE LINE

Comp. Declin. 18° E
 Agency DCSSO
 Party Chief RANDALL W SMITH
 Notekeeper [Signature]
 Witnesses STEPHEN J FRANKIE
 TERRIE FRANSEN

Address

Surveyor's Seal

REGISTERED PROFESSIONAL LAND SURVEYOR

[Signature: Randall W. Smith]

OREGON JULY 25, 1990 RANDALL W. SMITH 2469