

FILED

GOVERNMENT CORNER RESTORATION FORM

Township 23S Range 5W Sec. 11 County DOUGLAS

DEC 12 1990

State OR Date 12/6/90

No. _____ COUNTY SURVEYOR
DOUGLAS COUNTY, ORE.

Corner Designation

S11/S12
S14/S13

- Condition Report Only
- Not Found
- Renewed
- Unrecorded
- Surveyed In
- Referenced Out

Previous Renewals #8

MONUMENT DETAIL

Monument(s) Found: (Condition and Source)

1/2" I.R. PROTRUDING 18" ABOVE
A 3 FT X 2 FT HIGH MOUND
OF STONE (REN#8)

N/A

Accessories Found:

16" NOW 14" DIA 1/2 FT HIGH ROTTED D. FIR STUMP
NO BLAZE'S OR SCRIBING VISIBLE IS FOUND NEAR
REC. POSITION (S 49°W, 81.8 FT) POSSIBLE ORIG. BT.
(BT IS APPROX 45 FT BELOW COR. NEAR TOE OF BLUFF)

NO OTHER ORIG BT'S FOUND

16" NOW 26" DIA D. FIR WITH A FULLY HEALED DOUBLE BLAZE,
BEARS N 19°W, 46.9 FT (AGREE'S WITH REC.) REN#8

6" NOW 10" DIA. DOUBLE TRUNKED MADRONE WITH A BRASS
WASHER MARKED "RE 2741", AND POSSIBLE BARK SCRIBING
FOUND ON SOUTHWEST TRUNK, BEARS N 47 1/4° E, 49.5
(REC N 47 1/4° E, 47.8 FT DIST TO WASHER) REN#8

16" NOW 26" DIA D. FIR WITH A FULLY HEALED DOUBLE
BLAZE, BEARS S 60 1/2° E, 30.6 FT (REC S 60 1/2° E, 28.6 FT,
DIST A POSSIBLE PALE MEASUREMENT)

SW MADRONE FROM REN#8 IS GONE

#132 ✓

RENEWAL

Monument Set (Procedure and Description)

A BC/IP WAS NOT SET, GROUND IS TOO ROCKY TO GET A SOLIDLY SET BC/IP

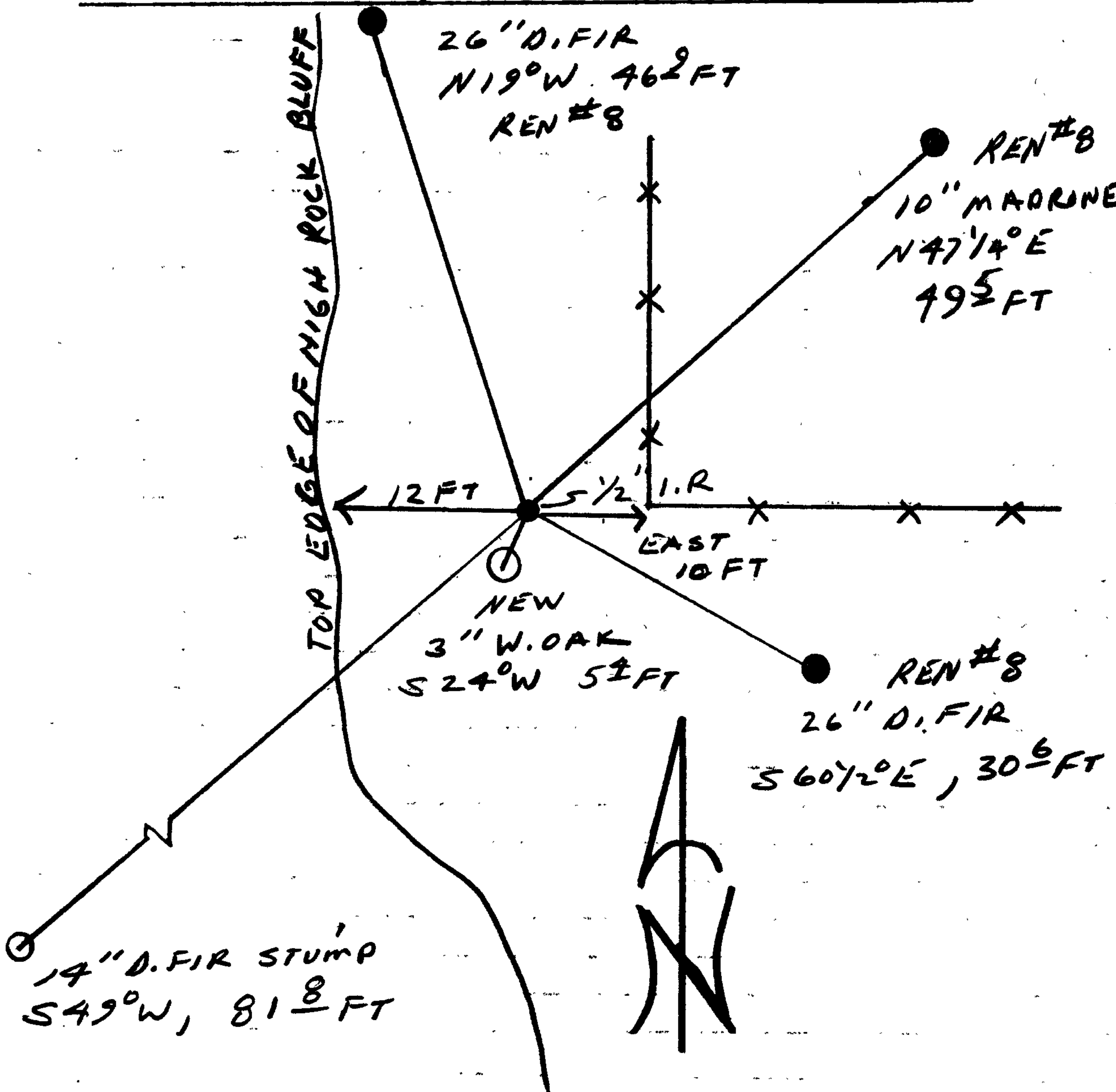
Monument Detail

N/A

New Accessories

3" W. OAK DOUBLE BLAZE AND SCRIBED "X BT" BEARS S24°W, 5.4 FT.

Sketch of Monument, Accessories, and General Area



Location & Comments

CORNER LIES AT TOP OF ROCK BLUFF 12 FT EAST OF DROP OFF AND 10 FT WEST OF A NORTHERLY AND EASTERLY RUNNING FENCE CORNER.

Comp. Declin. 18° E
Agency DCSO
Party Chief RANDALL W SMITH
Notekeeper Randall W Smith
Witnesses STEPHEN J FUAUSE
TERRIE FRANSEN

Address

Surveyor's Seal

REGISTERED PROFESSIONAL LAND SURVEYOR

Randall W Smith

OREGON
JULY 25, 1990
RANDALL W. SMITH
2469