

GOVERNMENT CORNER RESTORATION FORM

FILED

Township T24S Range 1W Sec. 7 County DOUGLAS

State OREGON Date 11/08/90 No. \_\_\_\_\_

DEC 7 1990

Corner Designation

R		R
2	S12   S7	1
W	S13   S18	W

COUNTY SURVEYOR  
DOUGLAS COUNTY, ORE.

- \_\_\_\_\_ Condition Report Only
- \_\_\_\_\_ Not Found
- Renewed
- \_\_\_\_\_ Unrecorded
- \_\_\_\_\_ Surveyed In
- \_\_\_\_\_ Referenced Out

Previous Renewals 70 T24-2 (#81 T24-1)

MONUMENT DETAIL

Monument(s) Found: (Condition and Source)

FROM RENEWAL #70 A 2 1/2" BRASS CAP (MARKED AS AT RIGHT) ON AN IRON PIPE IS SET APPROXIMATELY FLUSH WITH GROUND.

COUNTY SURVEYORS OFFICE

T24S

R	S12   S7	R
2	S13   S18	1
W		W

1969

Accessories Found:

EVIDENCE OF FOUR ORIGINAL BEARING TREES IS FOUND.

A FIR 24 INS. DIAM. NOW A 30 INCH DIAMETER 1 1/2 FOOT TALL FIR STUMP WITH NO BARK SCRIBING VISIBLE BEARS N 75° E, 17 3/4 FEET DISTANT (RECORD N 75° E, 17 3/4 FT. PROBABLE FACE MEASUREMENT).

A FIR 30 INS. DIAM. NOW A 36 INCH DIAMETER 3 1/2 FOOT TALL FIR STUMP WITH NO BARK SCRIBING VISIBLE BEARS S 81° E, 20 2 FEET DISTANT (RECORD S 81° E 19 8 FT PROBABLE FACE MEASUREMENT).

A 32 INS. DIAM. HEMLOCK NOW A 38 INCH D.B.H. HEMLOCK WITH ILLEGIBLE SCRIBING VISIBLE IN A PARTIALLY HEALED SINGLE BLAZE BEARS S 79° W, 30 4 FEET DISTANT (RECORD S 75° W, 30 4 FT.).

A FIR 20 INS. DIAM. NOW A 20 INCH DIAMETER 1 1/2 FOOT TALL ROTTED FIR STUMP WITH NO BARK SCRIBING VISIBLE BEARS N 59° W, 35 3 FEET DISTANT (RECORD N 61° W, 33 00 FT.).

TWO BEARING TREES FROM RENEWAL #70 ARE FOUND NE BEARING TREE GONE DUE TO ROAD WORK.

A 10" HEMLOCK NOW AN 11 INCH D.B.H. 6 FOOT TALL METAL CAPPED HEMLOCK STUMP WITH THE SCRIBING T24S R2W S12 CS BT VISIBLE IN A PARTIALLY HEALED SINGLE BLAZE BEAR N 6° W 22.3 FEET DISTANT (AS PER RECORD)

A 22" HEMLOCK NOW A 22 INCH, 4 1/2 FOOT TALL METAL CAPPED HEMLOCK STUMP WITH THE SCRIBING T24S K1W S18 CS BT VISIBLE IN A PARTIALLY HEALED SINGLE BLAZE BEARS S 43° E, 59 3 FEET DISTANT (AS PER RECORD).

#154 T24-1 X  
#117 T24-2 X

U.S. File No. 64/11-4

RENEWAL

Monument Set (Procedure and Description)

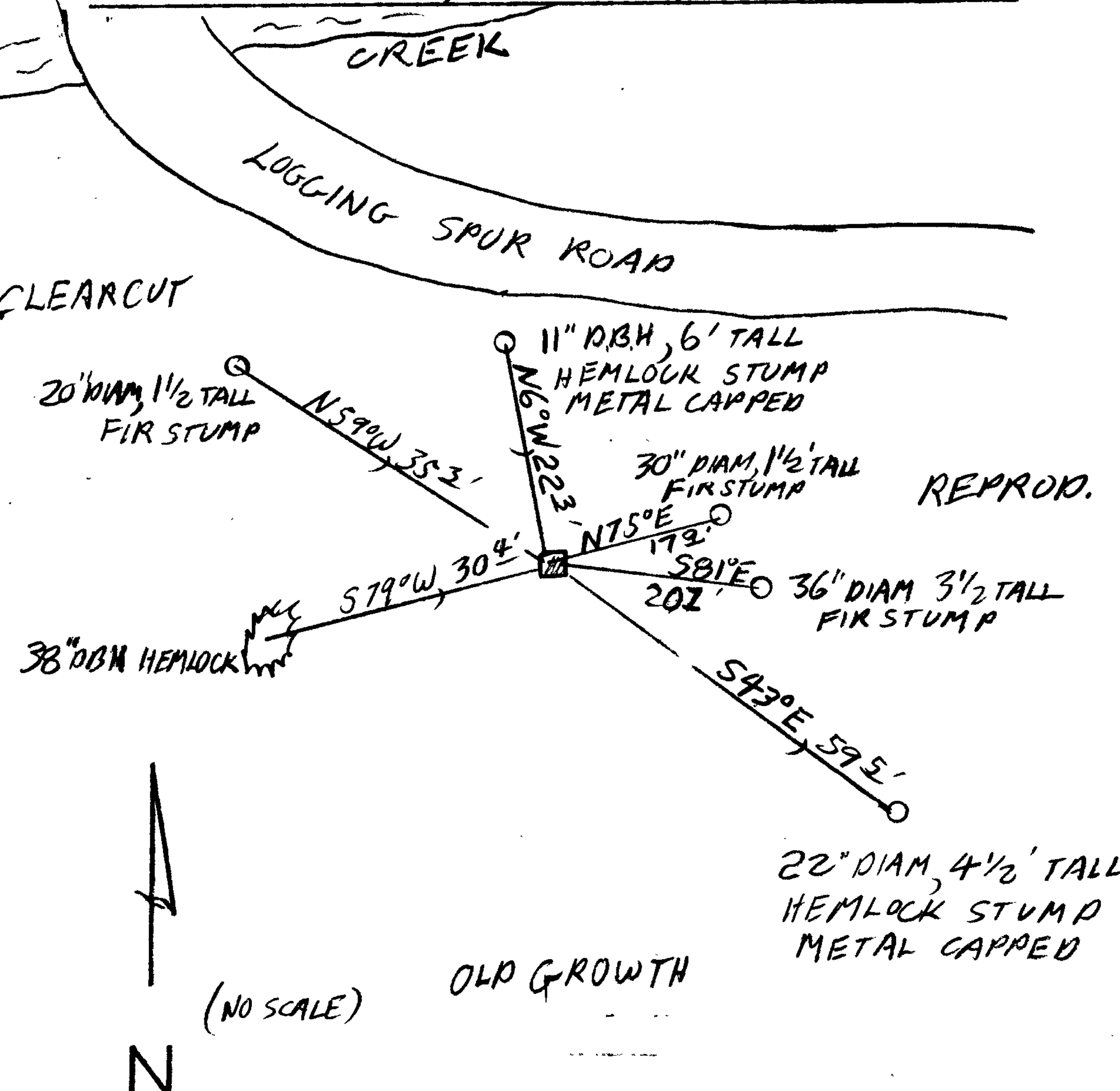
(NA)

Monument Detail

New Accessories

NO SUITABLE LIVE TREES NEARBY ALL FOUND STUMPS ARE IN GOOD CONDITION EXCEPT ONE ROTTED STUMP NOTED.

Sketch of Monument, Accessories, and General Area



Location & Comments

CAP LIES ON STEEP NORTHERLY SLOPE ABOVE CUT BANK FOR LOGGING SPUR ROAD.

Comp. Declin. 18°E  
Agency DCSO  
Party Chief Stephen John Hauer  
Notekeeper S.O. FLAUSE  
Witnesses TERRIE FRANNSEN

Address

Surveyor's Seal

REGISTERED PROFESSIONAL LAND SURVEYOR

Signature of Larry E. Monrean

OREGON JULY 13, 1979 LARRY E. MONREAN #1830

