

GOVERNMENT CORNER RESTORATION FORM

FILED

Township 22 S Range 5 W Sec. 2 County DOUGLAS

State OR Date 10-20-90 No. _____

DEC 7 1990

Corner Designation

COUNTY SURVEYOR

DOUGLAS COUNTY, ORE.
Condition Report Only

Not Found

Renewed

Unrecorded

Surveyed In

Referenced Out

MONUMENT DETAIL

3 | 2
10 | 11

Previous Renewals 41 & 86

Monument(s) Found: (Condition and Source)

FOUND CO. SURVEYOR'S OFFICE BRASS CAP & IRON

RPE MONUMENT PER RENEWAL # 41.

2 3/8" DIAM. CAP IS ON A 1 3/8" DIAM GALV. I. PIPE

COUNTY SURVEYOR'S OFFICE

T 22 S R 5 W

3 | 2

10 | 11

1958

Accessories Found:

ORIGINAL - FD 60" CEDAR STUMP WITH FRAG. SCISSORING BEARS N 78 E 17.2' TO FACE

FD 40" FIR STUMP NO SCISSORING VISIBLE BEARS S 8° W 68.0 FT.

REN. # 41 - FD 20" NOW 26" ^{STUMP 4 1/2' HIGH} FIR V WITH WELL HEALED DOUBLE GLAZE BEARS N 24° E 39.5 FT.

- FD 16" NOW 28" FIR WITH WELL HEALED DOUBLE GLAZE BEARS N 13 W 21.2 FT.

- FD 18" NOW 24" FIR WITH HEALED GLAZE BEARS S 3° W (REL. S 8° W) 53.4 FT.

- FD 18" NOW 30" FIR STUMP 1 1/2' HIGH BEARS S 65 1/4° E (REL. S 60 1/2° E) 120.8 FT.

#189X

C.S. File No. 64/11-2
C

RENEWAL

Monument Set (Procedure and Description)

Monument Detail

NONE

N/A

New Accessories

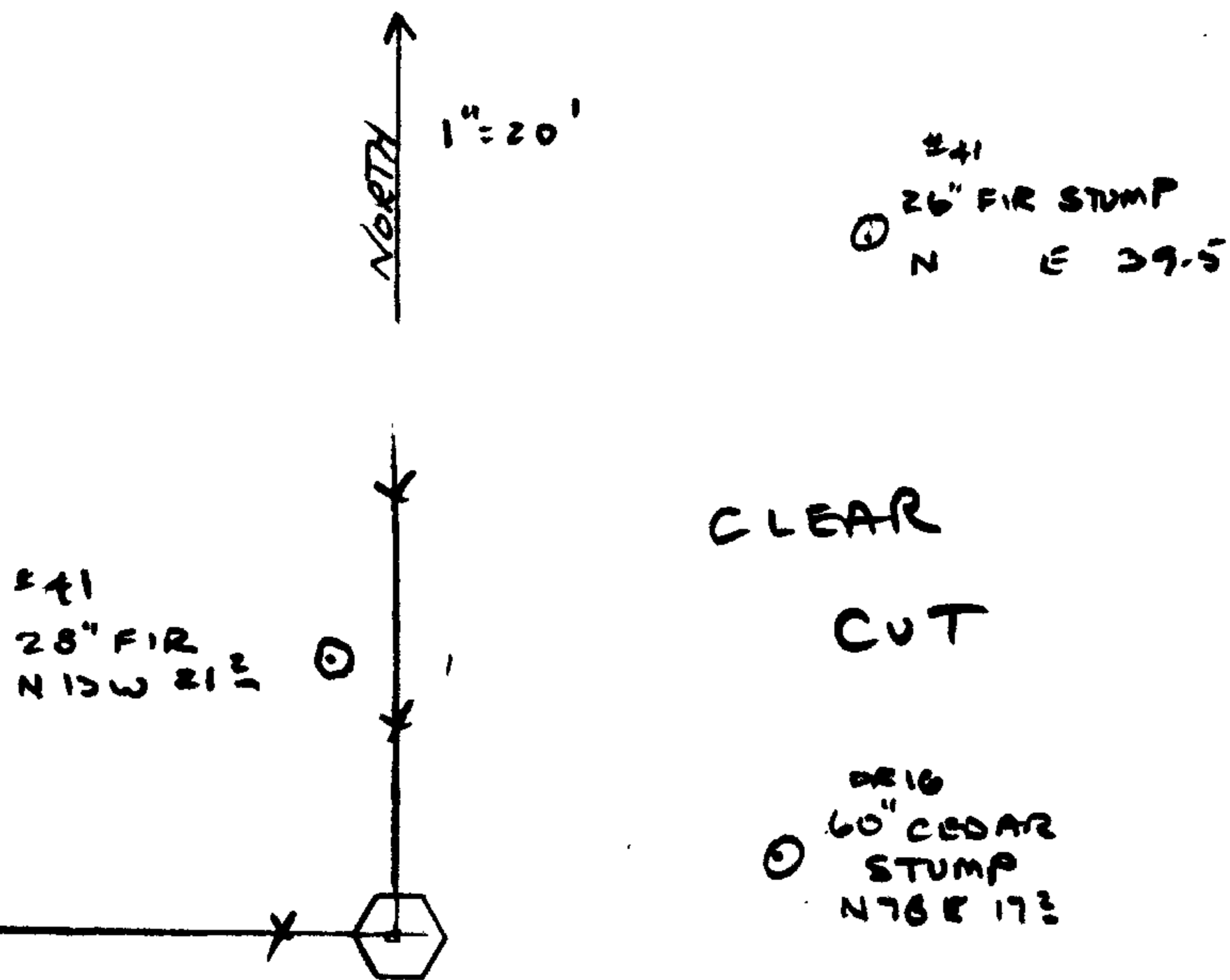
"SILCS AT"

9" D. FIR DOUBLE DIAZED AND SCRIBED DEARS S 53 1/2° E 61.5 FT.

Sketch of Monument, Accessories, and General Area

Location & Comments

FENCES RUNNING NORTH AND WEST INTERSECT AT CORNER. CLEAR CUT TO EAST



Comp. Declin. 18° E
Agency, D.C.S.O.
Party Chief LARRY E. MONREAN
Notekeeper " " "
Witnesses S.J.F.

Address

Surveyor's Seal

REGISTERED
PROFESSIONAL
LAND SURVEYOR

Larry E. Monrean

OREGON
JULY 13, 1979
LARRY E. MONREAN
#1830