

GOVERNMENT CORNER RESTORATION FORM

FILED

JS

Township 26S Range 4W Sec. 10 County DOUGLAS

State OR Date 8/28/90 No. _____

AUG 30 1990

Corner Designation

COUNTY SURVEYOR
DOUGLAS COUNTY, ORE.

1/4 S10 | S11

- Condition Report Only
- Not Found
- Renewed
- Unrecorded
- Surveyed In
- Referenced Out

Previous Renewals M4-71, #103

MONUMENT DETAIL

Monument(s) Found: (Condition and Source)

A DCSD 2 1/2" DIA BRASS CAP ON A
1/4" O.D. IRON PIPE, PROTRUDING 12"
ABOVE GROUND. (REN #103)

COUNTY SURVEYORS OFFICE

T26S R4W

S10 | S11

1971

Accessories Found:

7" NOW 38" DIA. W. OAK WITH A PREVIOUSLY OPENED, NO
SCRIBING VISIBLE, BEARS N52°W, 904.6 FT (RECORD N54°W,
904.6 FT) ORIG. BT

13" NOW 15" DIA. W. OAK WITH A FULLY HEALED DOUBLE BLAZE,
BEARS N8 1/2°E, 117.0 FT (AGREE'S WITH RECORD) REN #103

8" NOW 11" DIA. W. OAK WITH A FULLY HEALED SINGLE BLAZE,
BEARS N19 3/4°W, 135.5 FT (RECORD N11 1/2°W, 135.5 FT)
REN #103

#1264

C.S. Form No. 6410-10

RENEWAL

Monument Set (Procedure and Description)

NONE

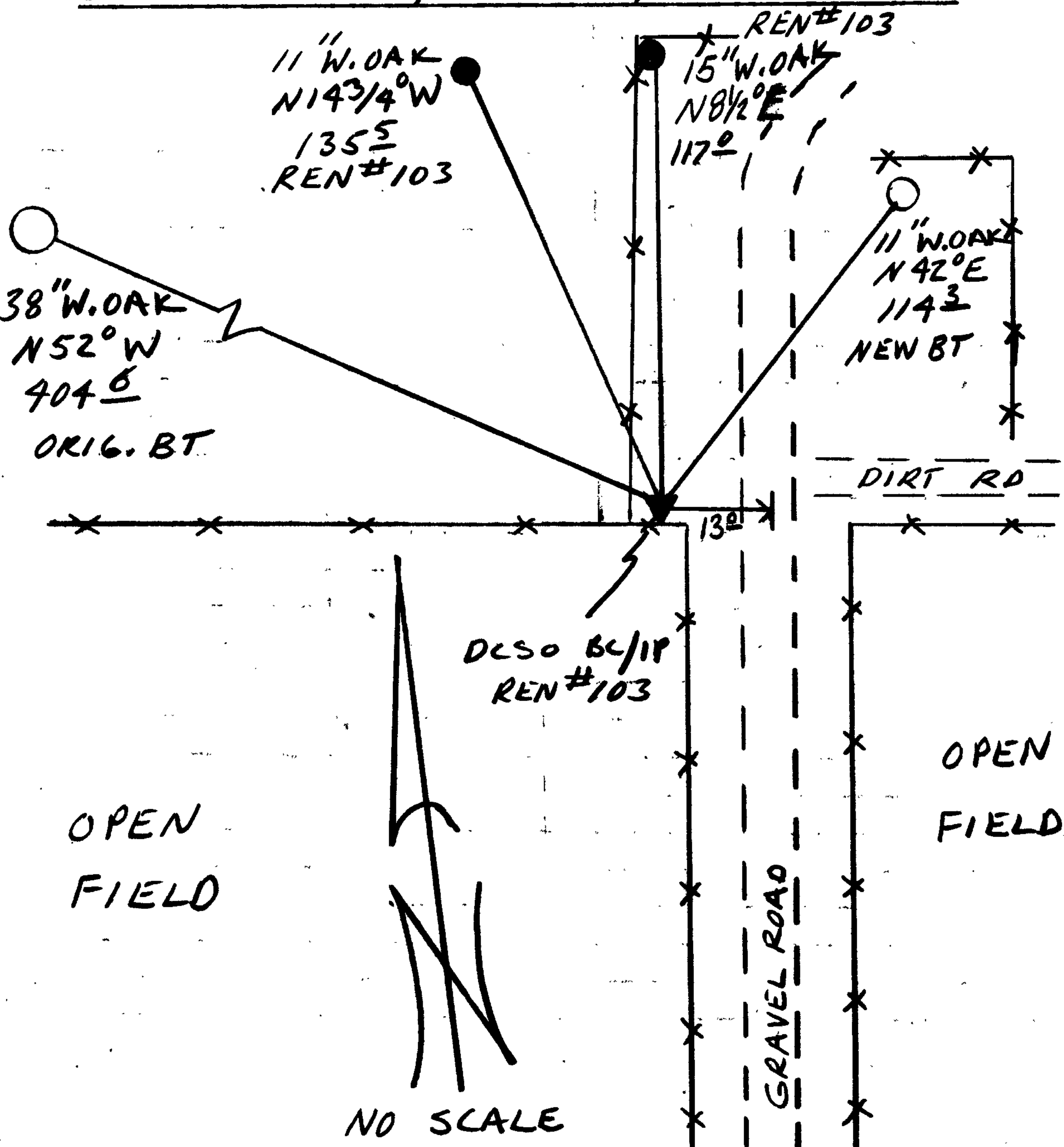
Monument Detail

N/A

New Accessories

A MULTI TRUNK W. OAK DOUBLE BLAZED AND SCRIBED "Y4S 11 CS BT"
ON 11" DIA. WEST TRUNK, BEARS N42°E, 114.3 FT TO CENTER OF
WEST TRUNK AT BASE.

Sketch of Monument, Accessories, and General Area



Location & Comments

SEE CONDITION REPORT (CS 61/6)
FOR ADDITIONAL INFORMATION,

Comp. Declin. 18° E
Agency DCSO
Party Chief RANDALL W. SMITH
Notekeeper Randall W. Smith
Witnesses STEPHEN J. FLAUSE

Address

Surveyor's Seal

REGISTERED
PROFESSIONAL
LAND SURVEYOR

Randall W. Smith

OREGON
JULY 25, 1930
RANDALL W. SMITH
2469