

GOVERNMENT CORNER RESTORATION FORM

FILED

Township 26S Range 5W Sec. 20 County DOUGLAS

AUG 13 1990

State OR Date 7/24/90 No. \_\_\_\_\_

COUNTY SURVEYOR  
DOUGLAS COUNTY, ORE.

Corner Designation

$\frac{1}{4}$   $\frac{S 20}{S 29}$

- Condition Report Only
- Not Found
- Renewed
- Unrecorded
- Surveyed In
- Referenced Out

MONUMENT DETAIL

Previous Renewals #14, #73, #79

Monument(s) Found: (Condition and Source)

A 1/4" I.D. IRON PIPE FIRMLY SET  
PROTRUDES 3 IN. ABOVE GROUND.  
REN #73

N/A

Accessories Found:

NO ORIG. BT'S FOUND

8" NOW 12" DIA. MADRONE WITH A HEALED BLAZE, BEARS N60 1/2° W,  
18.4 FT, (REC. N60 1/2° W, 19.2 FT DIST IS TO CENTER OF TRUNK BLAZE  
HEIGHT) REN #14

20" NOW 30" DIA 2Y2 FT HIGH ROTTED D. FIR STUMP WITH PARTIAL  
ILLEGIBLE SCRIBING VISIBLE ON AN OPEN BLAZE, BEARS N86° E,  
19.1 FT (REC N 83° E, 18.3 FT DISTANCE IS TO BLAZE) REN #14

10" NOW 11" DIA. 14 FT TALL D. FIR SNAG WITH A PARTIALLY HEALED,  
ROTTED, DOUBLE BLAZE) ILLEGIBLE SCRIBING IS VISIBLE; BEARS  
S42 1/2° W, 23.4 FT (AGREES WITH RECORD) REN #73

14" NOW 21" DIA. D. FIR WITH A FULLY HEALED DOUBLE BLAZE,  
BEARS N62° W, 17.4 FT (REC N64 1/2° W, 17.4 FT) REN #79

9" NOW 18" DIA. D. FIR WITH A FULLY HEALED DOUBLE BLAZE  
BEARS S41 1/2° E, 21.8 FT (AGREES WITH RECORD) REN #79

#1614

RENEWAL

Monument Set (Procedure and Description)

NONE

Monument Detail

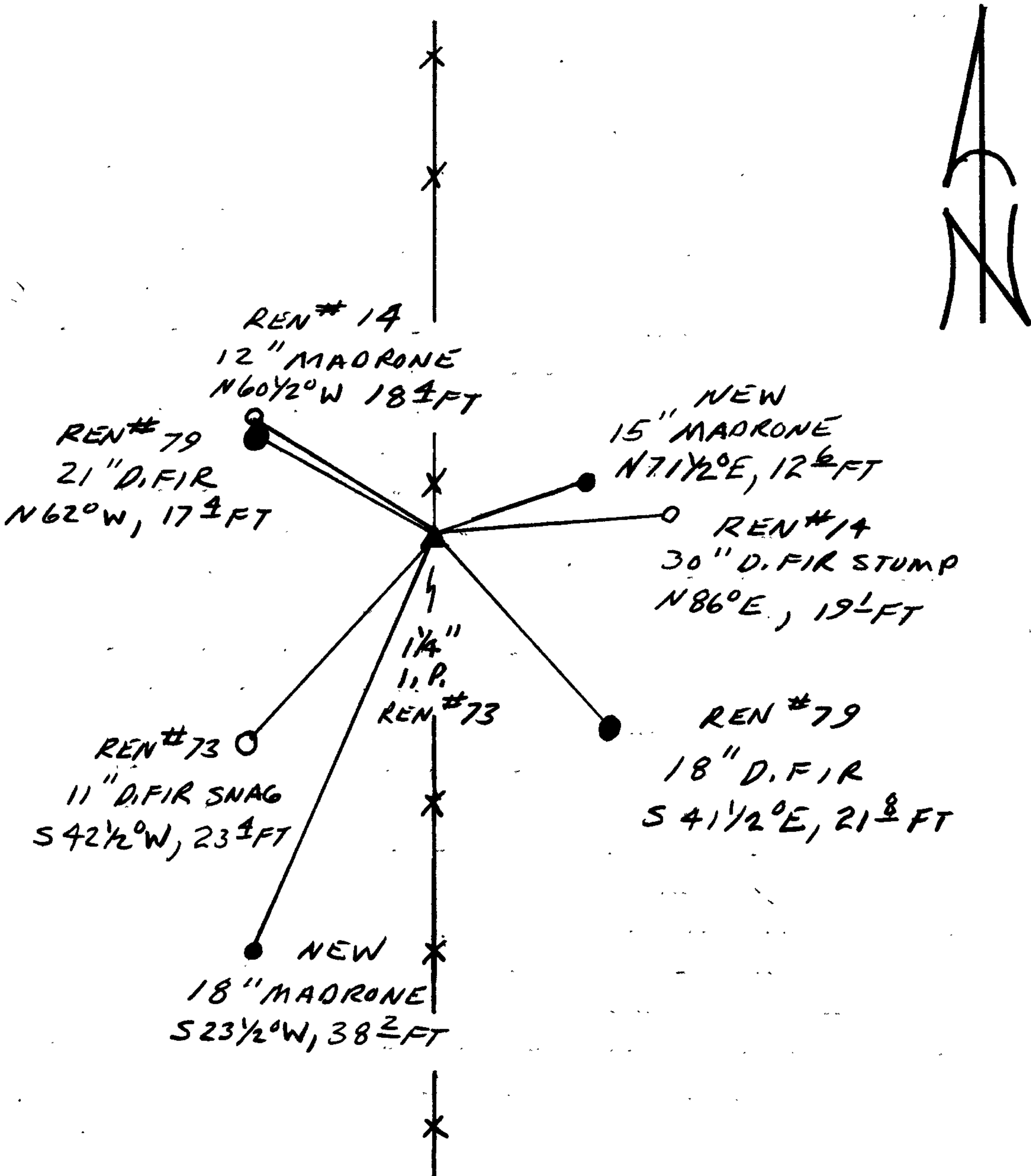
N/A

New Accessories

15" DIA. MADRONE DOUBLE BLAZED AND SCRIBED "1/4 S 20 CS BT"  
BEARS N 7 1/2° E, 12.6 FT.

18" DIA. MADRONE, DOUBLE BLAZED AND SCRIBED "1/4 S 29 CS BT"  
BEARS S 23 1/2° W, 38.2 FT

Sketch of Monument, Accessories, and General Area



Location & Comments

CORNER LIES IN A NORTH - SOUTH  
FENCE LINE.

Comp. Declin. 18° E  
Agency DCSO  
Party Chief RANDALL W. SMITH  
Notekeeper *Randall W. Smith*  
Witnesses STEPHEN J. FLAUSE  
TERRIE FRANSSON

Address

Surveyor's Seal

REGISTERED  
PROFESSIONAL  
LAND SURVEYOR

*Larry E. Monrean*

OREGON  
JULY 13, 1979  
LARRY E. MONREAN  
#1830