

GOVERNMENT CORNER RESTORATION FORM

FILED

SR

Township 285 Range 4W Sec. 31 County DOUGLAS

MAY 22 1990

State OR Date 5/17/90 No. _____

COUNTY SURVEYOR
DOUGLAS COUNTY, ORE.

Corner Designation

$\frac{1}{4}$ S 31 | S 32

- Condition Report Only
- Not Found
- Renewed
- Unrecorded
- Surveyed In
- Referenced Out

MONUMENT DETAIL

Previous Renewals M53-61

Monument(s) Found: (Condition and Source)

A 2" I.D. IRON PIPE FLUSH WITH GROUND. (FROM M53-61)

1" DIA. IRON ROD PROTRUDES 6" ABOVE GROUND (REC 3/4" IN M53-61) BEARS S 58 1/4° E, 9.55 FT (AGREES WITH RECORD) SOURCE UNKNOWN

N/A

Accessories Found:

BEARING + DIST. FROM 2" I.P.

A DOUBLE TRUNKED B. OAK WITH A FULLY HEALED SINGLE BLAZE FOUND ON 19" DIA. SOUTHWEST TRUNK, WE OPEN BLAZE AND FIND SCRIBE MARKS "BT". CENTER OF ROOT CROWN BEARS N 48° E, 88.4 FT (SOURCE UNKNOWN RING COUNT DATES BACK APPROX. TO M53-61)

16" DIA. T. CEDAR WITH A FULLY HEALED SINGLE BLAZE, WE OPEN ILLEGIBLE SCRIBE MARKS VISIBLE, BEARS N 10° W, 15.1 FT (SOURCE UNKNOWN RING COUNT DATES BACK APPROX TO M53-61)

#136 +

RENEWAL

Monument Set (Procedure and Description)

NONE

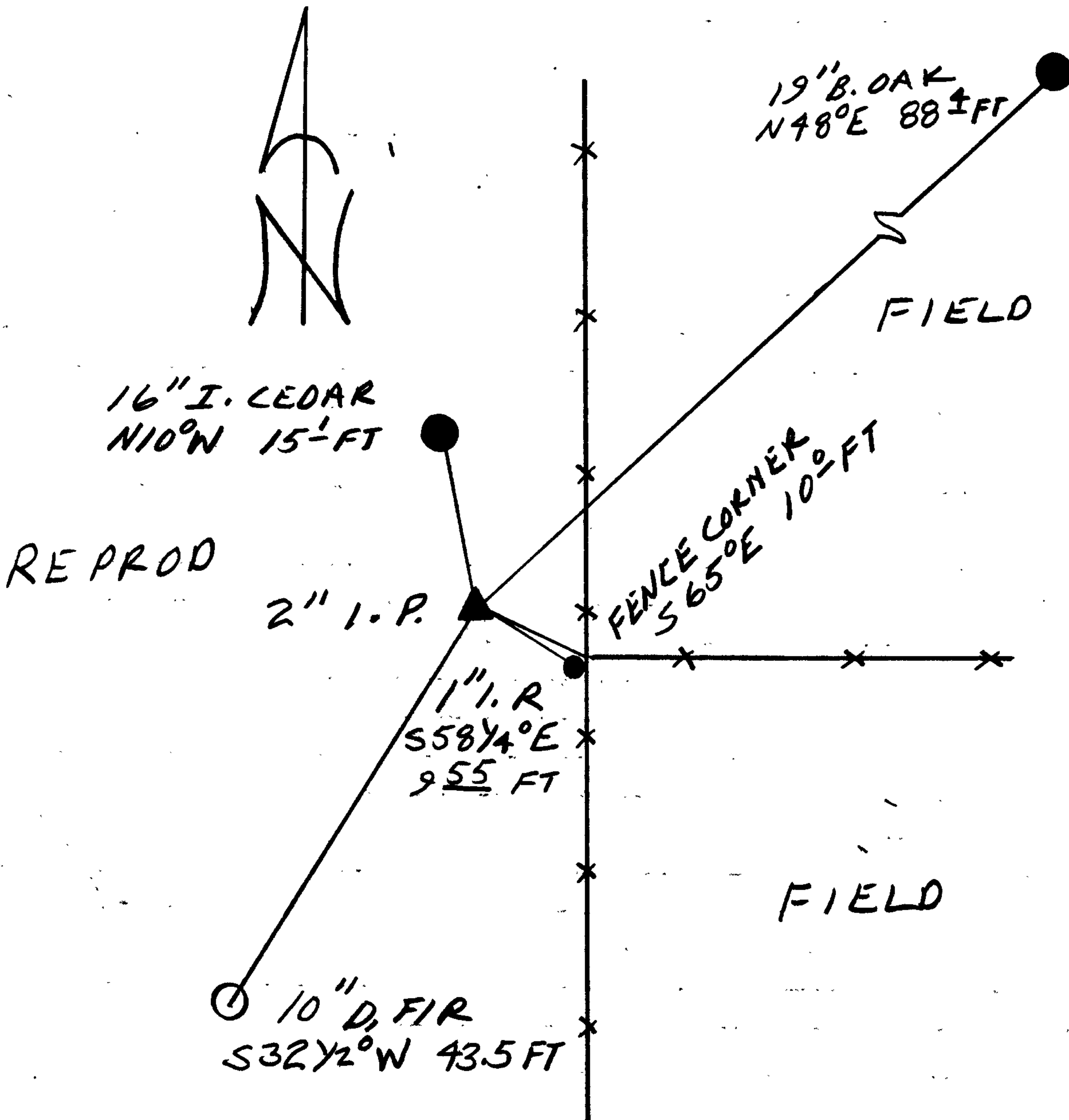
Monument Detail

N/A

New Accessories

10" DIA. D. FIR DOUBLE BLAZED AND SCRIBED "1/4 S 31 CS BT"
BEARS S 32 1/2° W, 43.5 FT

Sketch of Monument, Accessories, and General Area



Location & Comments

2" DIA IRON PIPE BEARS
N 65° W, 10.0 FT FROM A
NORTH - SOUTH AND EAST
RUNNING FENCE CORNER.

Comp. Declin. 18° E
Agency DCSO
Party Chief RANDALL W SMITH
Notekeeper [Signature]
Witnesses STEPHEN J FLAISE

Address

Surveyor's Seal

REGISTERED
PROFESSIONAL
LAND SURVEYOR

[Signature]

OREGON
JULY 13, 1979
LARRY E. MONREAN
#1830