

GOVERNMENT CORNER RESTORATION FORM

FILED

Township 23S Range 5W Sec. 7 County DOUGLAS

State OR Date 4/24/90 No. \_\_\_\_\_

MAY 22 1990

Corner Designation

R 6 R 5  
1/4 S12/S7

COUNTY SURVEYOR  
DOUGLAS COUNTY, ORE

- Condition Report Only
- Not Found
- Renewed
- Unrecorded
- Surveyed In
- Referenced Out

MONUMENT DETAIL

Previous Renewals 1943 GLO D. RESURVEY

Monument(s) Found: (Condition and Source)

2 1/2" DIA. GLO BRASS CAP ON A 1"  
O.D. BY 36" LONG IRON PIPE FOUND  
LOOSE AT BOTTOM OF CREEK. 1943  
D. RESURVEY

U.S. GENERAL LAND OFFICE

1/4

S12/S7

1943

Accessories Found:

FROM FD GLO BC/JP  
8" NOW 1 1/2" DIA. CEDAR WITH ILLEGIBLE SCRIBE MARKS VISIBLE ON  
A PARTIALLY HEALED ROTTED BLAZE, WE OPEN FURTHER NO OTHER  
MARKS FOUND, RING COUNT INDICATES BLAZE DATES BACK TO ABOUT 1943  
GLO D. RESURVEY BT BEARS N43°E, 21.2 FT (REC N44°E 21.7 FT)  
1943 D. RESURVEY  
14" FIR BEARING S33°W, 34.3 FT NOT FOUND

#129 T23-5X

#79 T23-6X

C.S. File No. 64/9-5

RENEWAL

Monument Set (Procedure and Description)

GLO BC/IP RESET AT RECORD BEARING  
 AND DISTANCE FROM 14" DIA. CEDAR  
 (S 44° W, 21.7 FT), BC/IP NOW PROTRUDES  
 7" ABOVE CREEK BOTTOM. THE MARKS  
 "RESET 1990" ARE ADDED TO BRASS CAP.

Monument Detail

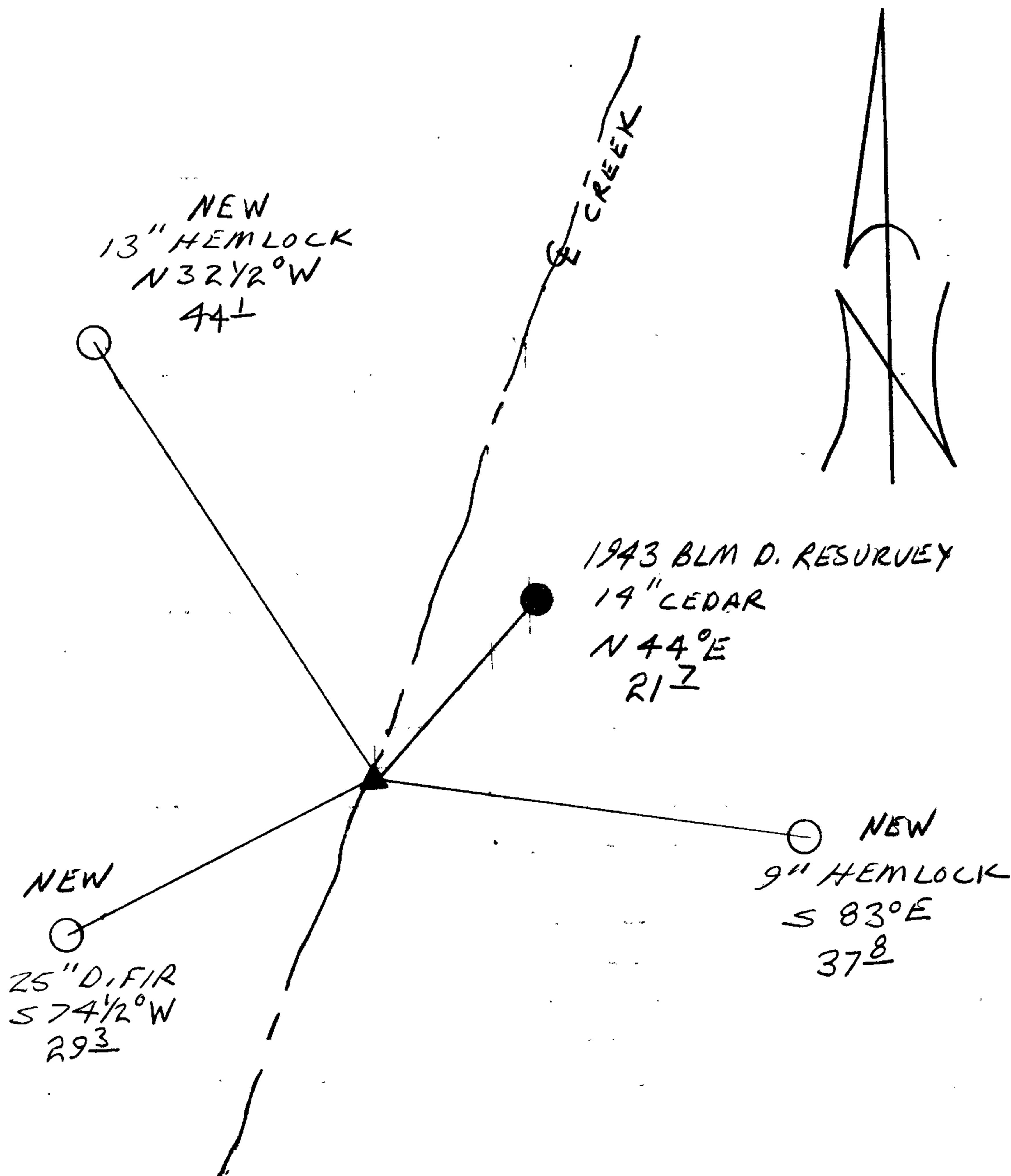
U.S. GENERAL LAND OFFICE

1/4  
 RESET  
 S12 | S7  
 1990  
 1943

New Accessories

25" DIA. D. FIR DOUBLE BLAZED AND SCRIBED "1/4 S12 CS BT"  
 BEARS S 74 1/2° W, 29.3 FT  
 13" DIA. HEMLOCK DOUBLE BLAZED AND SCRIBED "1/4 S12 CS BT"  
 BEARS N 32 1/2° W, 44.1 FT  
 9" DIA. HEMLOCK DOUBLE BLAZED AND SCRIBED "1/4 S7 CS BT"  
 BEARS S 83° E, 37.8 FT. TREE HAS A PISTOL BUTT; BEARING  
 AND DISTANCE GO TO CENTER OF TREE AT BOTTOM BLAZE.

Sketch of Monument, Accessories, and General Area



Location & Comments

\_\_\_\_\_  
 \_\_\_\_\_  
 \_\_\_\_\_  
 \_\_\_\_\_  
 \_\_\_\_\_  
 \_\_\_\_\_  
 \_\_\_\_\_

Comp. Declin. 18° E  
 Agency DLSO  
 Party Chief RANDALL W SMITH  
 Notekeeper Randall W Smith  
 Witnesses STEPHEN J FLAISE

Address \_\_\_\_\_

Surveyor's Seal

REGISTERED  
 PROFESSIONAL  
 LAND SURVEYOR

*Larry E. Monrean*

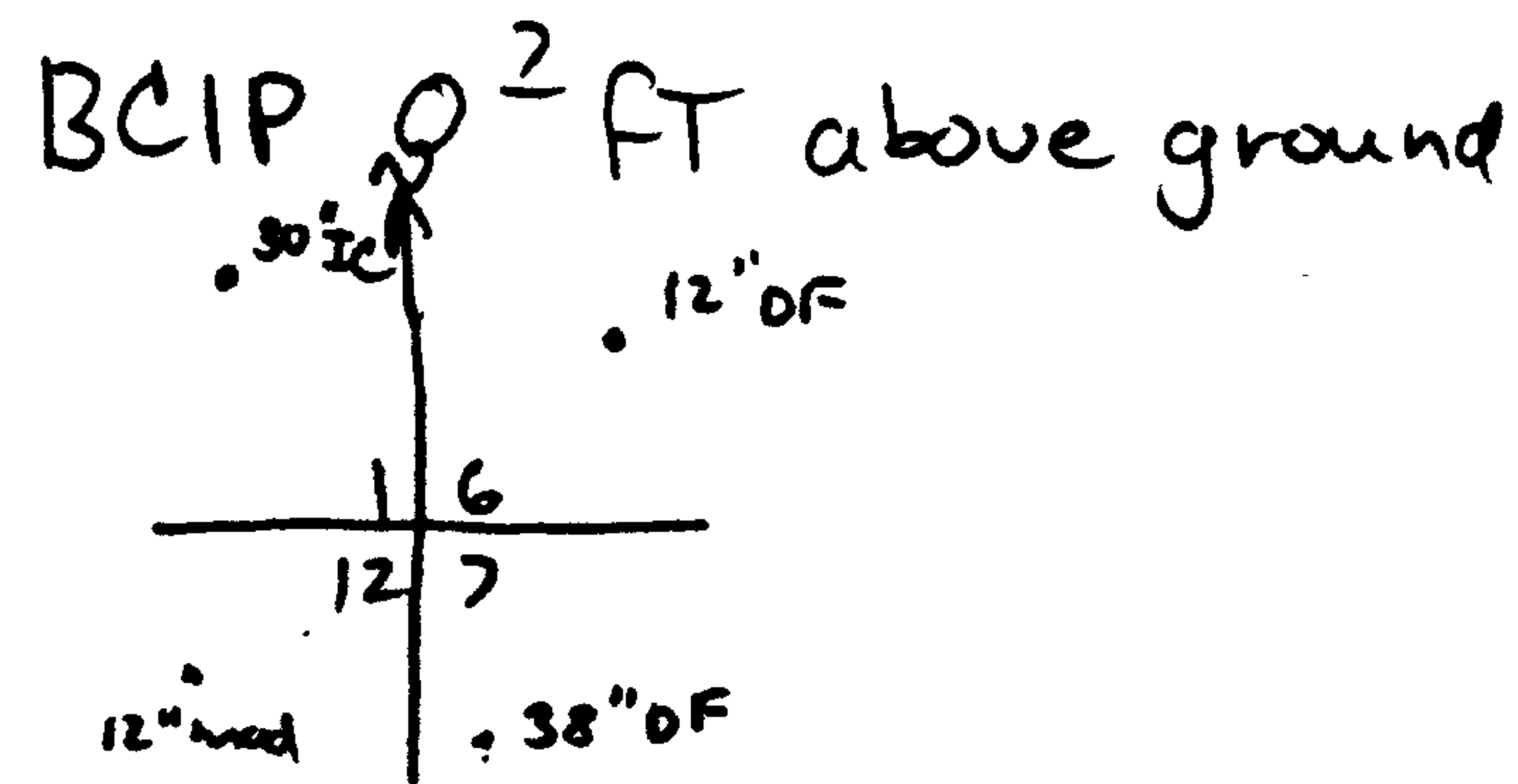
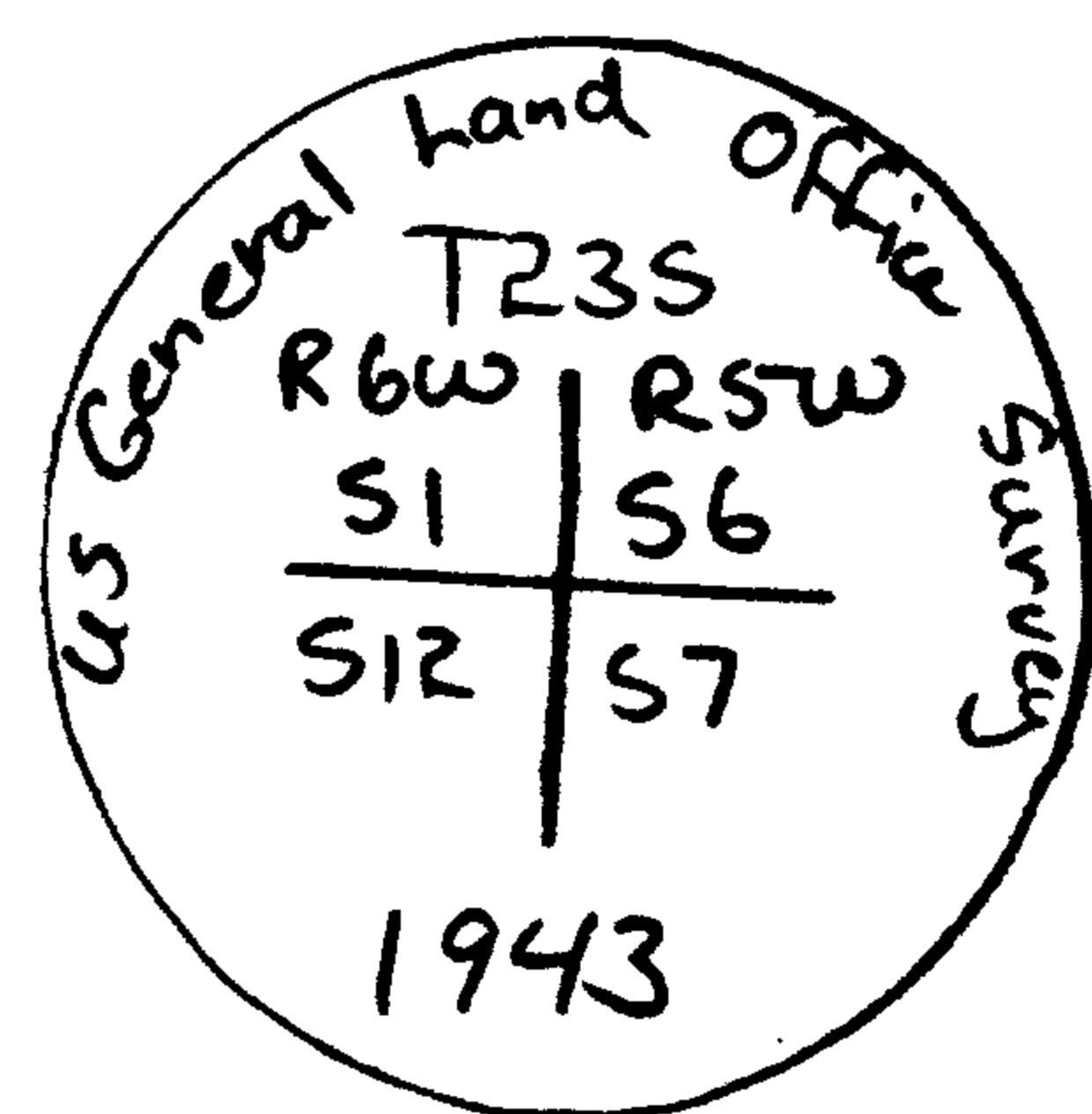
OREGON  
 JULY 13, 1979  
 LARRY E. MONREAN  
 #1830

J 23-6-12 Tract

No corners SET by Lone Rock Timber. Corner Renewal Only

Lone Rock Timber Co.  
Section 12, T23S, R6W, WM.

July 90



Corner lies on steep spur ridge bears SW

16" Original BT is decayed stamp, visible scribe bears S45°W 45 FT

12" Madrone bears S68°W 19.4 FT, scribe visible County Tag

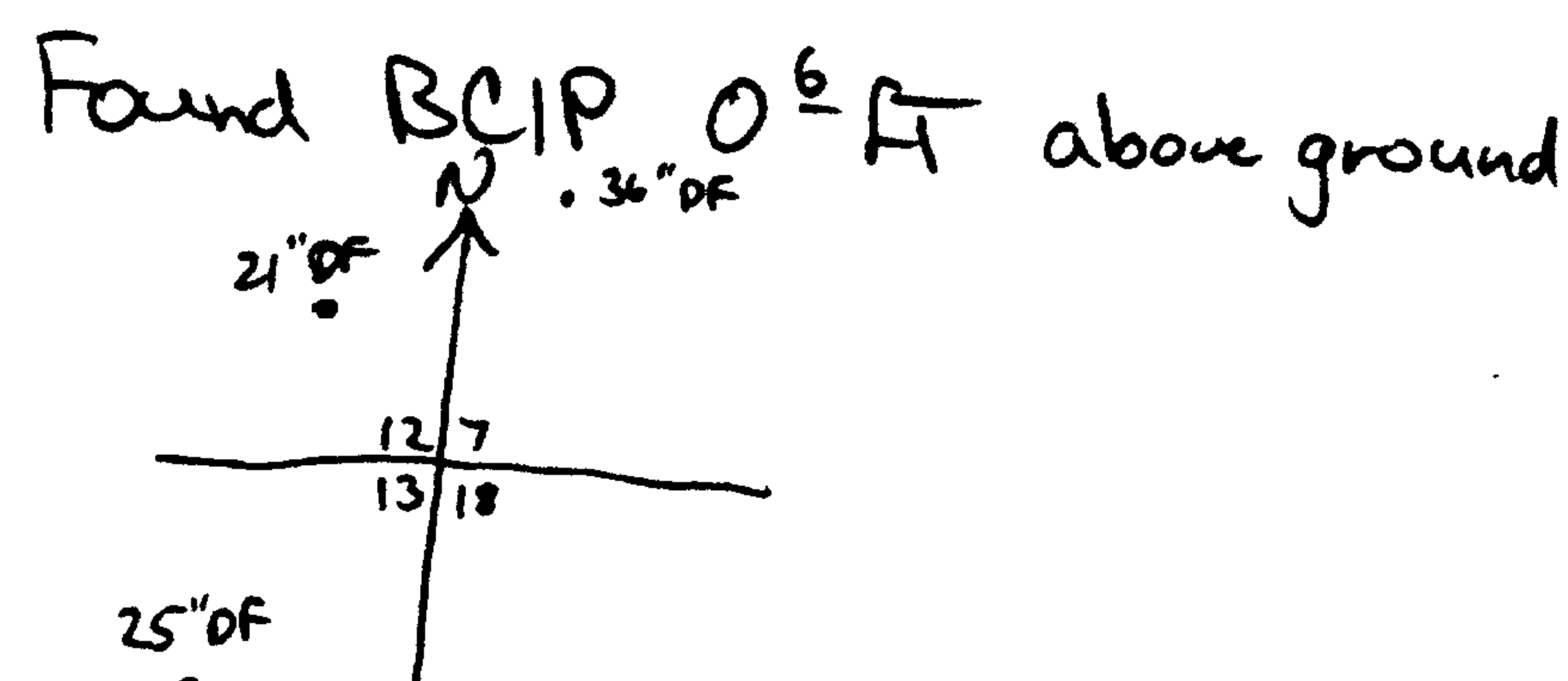
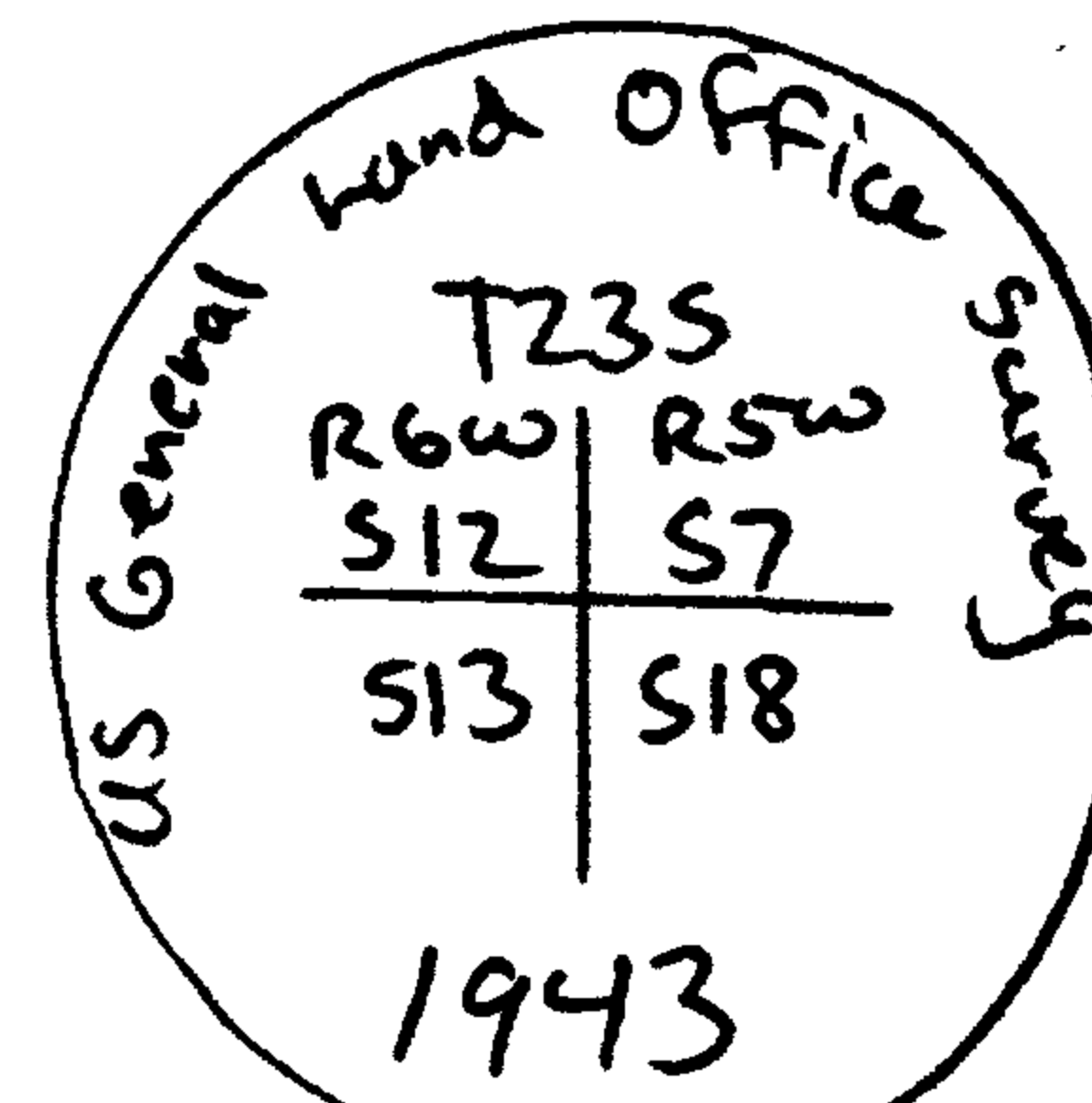
38" DF bears S21°E 31.7 FT, well healed County Tag

12" DF bears N56°E 51.0 FT, well healed County Tag

30" IE bears N53½°W 47.5 FT, well healed County Tag



Corner lies in creek out of ground, notes call Corner South of Creek 0.66 chs + 14.5 FT elevation.



Corner lies on steep east facing slope 1ch below small bench

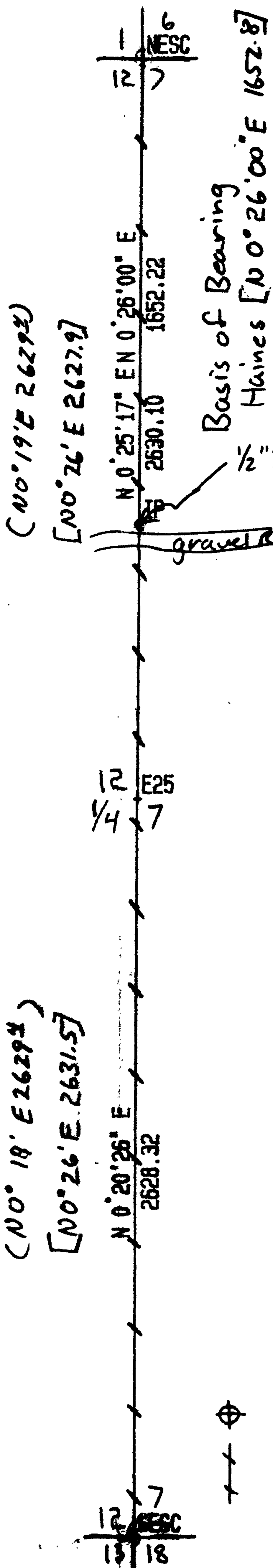
21" DF bears N50°W 33.1 FT barely visible healed scars, I Tag Tree

25" DF bears S42°W 70.2 FT, well healed scar, I Tag Tree

No Trace of 30" Tree S80°E 16.5 FT

36" DF burned blowdown bears N23°E 149 FT, burned out face

EAST LINE



	LRT	[Haines]	(BLM)
NESC - E25	2630.1	2627.9	2629.4
E25 - SESC	2628.3	2631.5	2629.4
NESC - SESC	5258.4	5259.4	5258.8
NESC - IP	1652.22	1652.8	

Narrative: Found corners as noted. E 1/4 of section 12 was found in creek out of place. Contacted County Surveyor's office and they replaced cap during process of our Traverse of line. We tied into cap after placement by county to confirm bearing and distance of this corner set by BLM by proportion 1943 and tied into by survey in 1967 by Wilford Haines. Map 35-11, Douglas County Surveyors Office.

- Legend
- ⊕ Corners found
  - + Line flagged, blazed + painted

REGISTERED  
PROFESSIONAL  
LAND SURVEYOR

*Ken W. Hoffine*

OREGON  
JULY 16, 1987  
KEN W. HOFFINE  
2291

SCALE: 600 ft/in 8.80in/mi