

GOVERNMENT CORNER RESTORATION FORM

FILED

SL

Township 26S Range 6W Sec. 20 County DOUGLAS

State OR Date 4/9/90 No. _____

MAY 15 1990

Corner Designation

$\frac{1}{4}$ S20 | S21

COUNTY SURVEYOR
DOUGLAS COUNTY, ORE.

- Condition Report Only
- Not Found
- Renewed
- Unrecorded
- Surveyed In
- Referenced Out

MONUMENT DETAIL

Previous Renewals #6 (M1-69) #128

Monument(s) Found: (Condition and Source)

3/4" I.D. IRON PIPE FOUND 1" BELOW GROUND (M1-69)

N/A

Accessories Found:

27" NOW 35" DIA. W. OAK WITH A FULLY HEALED SINGLE BLAZE BEARS N 70° W, 289.2 FT. (AGREES WITH RECORD) FROM REN #128

NO OTHER BT'S FOUND.

#1964

C.S. File No. 64/9-4C

RENEWAL

Monument Set (Procedure and Description)

FOUND 3/4" IRON PIPE IS REFERENCED, I.P. MEASURES 25" LONG WHEN REMOVED. A 2 3/8" DIA. BRASS CAP ON A 1/4" O.D. BY 31" LONG IRON PIPE IS SET AT REFERENCED POSITION. BC/IP PROTRUS 4 IN. ABOVE GROUND WITH FOUND 3/4" I.P. SET 2 IN BELOW GROUND ALONG NORTH SIDE OF BC/IP.

Monument Detail

DOUGLAS COUNTY SURVEYORS
T 26 S

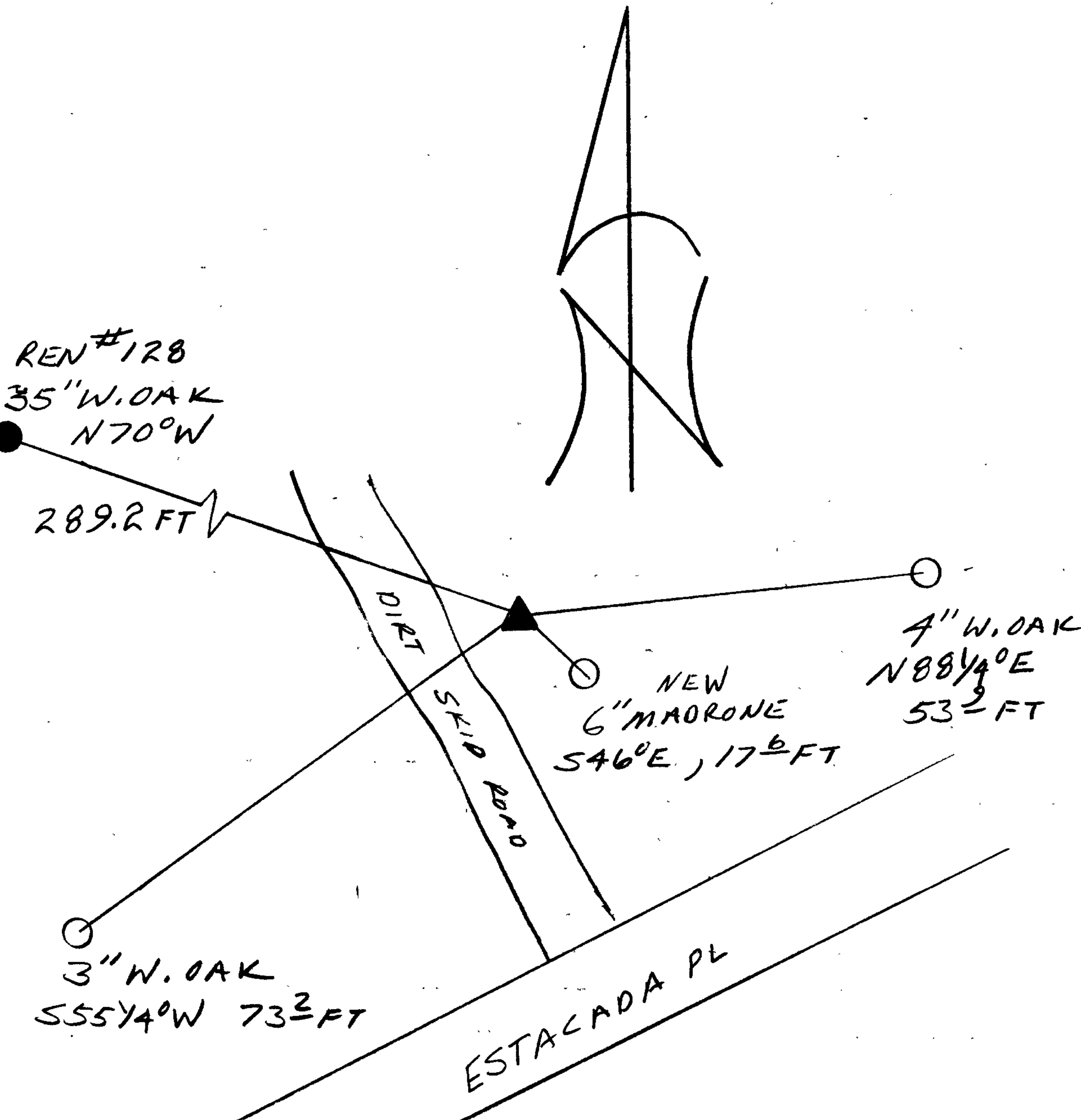
1/4 S 20 | S 21 R
6
W

1990
OFFICE

New Accessories

3" DIA W. OAK DOUBLE BLAZED AND SCRIBED "X BT"
BEARS S 55 1/4° W, 73.2 FT
4" DIA. W. OAK DOUBLE BLAZED AND SCRIBED "X BT"
BEARS N 88 1/4° E, 53.9 FT
6" DIA. MAORONE BARK SCRIBED "1/4 S 21 CS BT"
BEARS S 46° E, 17.6 FT

Sketch of Monument, Accessories, and General Area



Location & Comments

Comp. Declin. 18° E
Agency DCSO
Party Chief RANDALL W SMITH
Notekeeper Randall W Smith
Witnesses STEPHEN J FLAKE

Address

Surveyor's Seal

REGISTERED
PROFESSIONAL
LAND SURVEYOR

Larry E. Monrean

OREGON
JULY 13, 1979
LARRY E. MONREAN
#1830