

GOVERNMENT CORNER RESTORATION FORM

FILED

JR

Township 26S Range 6W Sec. 7 County DOUGLAS

MAY 15 1990

State OR Date 4/10/90 No. _____

Corner Designation

COUNTY SURVEYOR
DOUGLAS COUNTY, ORE.

S12/S7
S13/S18

- _____ Condition Report Only
- _____ Not Found
- Renewed
- _____ Unrecorded
- _____ Surveyed In
- _____ Referenced Out

Previous Renewals (#31 #152 T26-6) (#57 T26-7)

MONUMENT DETAIL

Monument(s) Found: (Condition and Source)

A 2 1/2" BRASS CAP ON A 1 1/2" OR IRON PIPE PROTRUSING 4 IN ABOVE GROUND. BRIP LEANS 0.4 FT NORTH OF PLUMB. (REN #152)

COUNTY SURVEYORS OFFICE

T 26 S

R	S12/S7	R
7	S13/S18	6
W	1964	W

Accessories Found:

14" NOW 31" DIA. B. OAK WITH A FULLY HEALED BLAZE BEARS N 18 1/2° E, 39.4 FT (AGREES WITH REC) ORIG. BT

NO OTHER ORIG. BT'S FOUND

8" NOW 23" DIA 1 1/2 FT TALL D. FIR STUMP WITH A FULLY HEALED LOWER BLAZE, BEARS S 41° W, 52.6 FT (REC S 41° W, 52.0 FT) (REN #31)

14" NOW 25" DIA. B. OAK WITH A FULLY HEALED DOUBLE BLAZE BEARS S 80 1/2° E, 59.0 FT (AGREES WITH REN #31) (REN #31)

24" NOW 35" DIA. 2 1/2 FT TALL OAK STUMP WITH A FULLY HEALED LOWER BLAZE BEARS N 23 1/4° W, 210.0 FT (AGREES WITH REC) (REN #31).

6" NOW 7" DIA 1 1/2 FT TALL D. FIR STUMP WITH A FULLY HEALED LOWER BLAZE, BEARS N 13 1/4° W, 17.0 FT (REC N 15° W, 17.0 FT) REN #152

#119 T26-7 x
#198 T26-6 x

RENEWAL

Monument Set (Procedure and Description)

Monument Detail

NONE

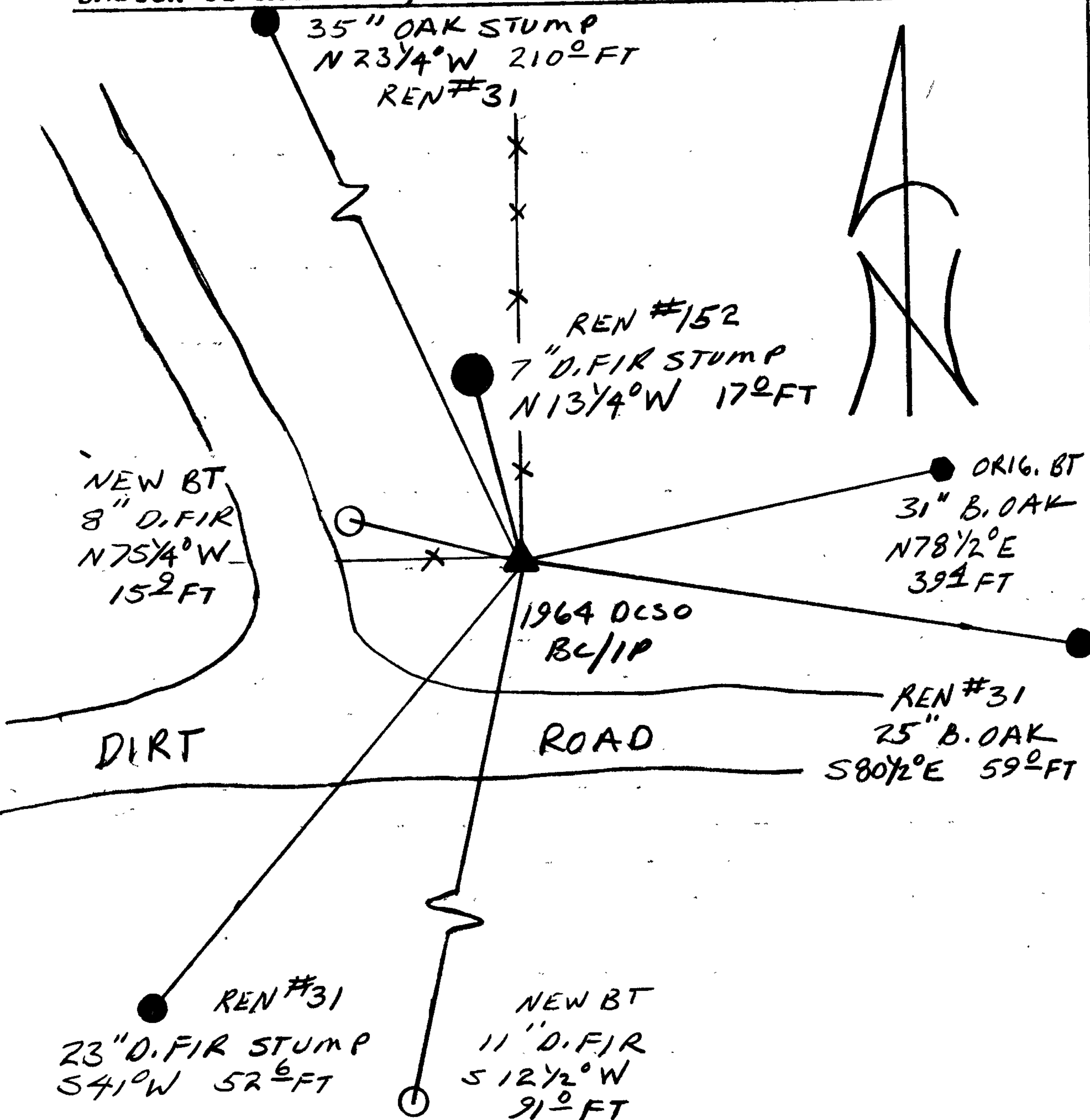
N/A

New Accessories

8" DIA D.FIR DOUBLE BLAZED AND SCRIBED "T26SR7WS12CS BT"
BEARS N 75 1/4° W, 15.9 FT

11" DIA D.FIR DOUBLE BLAZED AND SCRIBED "T26SR7WS13CS BT"
BEARS S 12 1/2° W, 91.0 FT

Sketch of Monument, Accessories, and General Area



Location & Comments

CORNER LIES AT THE INTERSECTION
OF A NORTH AND WEST RUNNING
FENCE LINES

Comp. Declin. 18° E
Agency DCSO
Party Chief RANDALL W SMITH
Notekeeper [Signature]
Witnesses STEPHEN J FLAUS

Address

Surveyor's Seal

REGISTERED
PROFESSIONAL
LAND SURVEYOR

[Signature]

OREGON
JULY 13, 1979
LARRY E. MONREAN
#1830