

GOVERNMENT CORNER RESTORATION FORM

FILED

[Signature]

Township 27S Range 5W Sec. 7 County DOUGLAS

MAY 9 1990

State OR Date 4/30/90 No. _____

COUNTY SURVEYOR
DOUGLAS COUNTY, ORE.

Corner Designation

1/4 S7 | S8

- Condition Report Only
- Not Found
- Renewed
- Unrecorded
- Surveyed In
- Referenced Out

Previous Renewals #66

MONUMENT DETAIL

Monument(s) Found: (Condition and Source)

A 1" DIA. STEEL AXLE PROTRUDING
2 IN. ABOVE GROUND FROM REN #66

N/A

Accessories Found:

16" NOW 35" DIA. B. OAK WITH A PREVIOUSLY OPENED AND REHEALED
BLAZE, BEARS S30 3/4° E, 328.0 FT (AGREES WITH RECORD) ORIG. BT

8" NOW 18" DIA 2 FT HIGH ROTTED OAK STUMP NO BLAZES OR
SCRIBING VISIBLE BEARS N16 1/2° W, 127.4 FT (REC. N16 1/2° W, 126.7 FT)
ORIG. BT

22" NOW 26" DIA. 2 1/2 FT HIGH OAK STUMP WITH A FULLY HEALED
DOUBLE BLAZE, BEARS N81 1/2° W, 34.3 (REC. N81 1/2° W, 33.5 FT)
PER REN #66

WEST POWER POLE NOW SAWED OFF 1 1/2' ABOVE GROUND, (ROTTED)
BEARS N19 1/2° E 8.0 FT (REC. N19 1/2° E, 7.5 FT. DIST IS TO NEAR
SIDE OF POLE). PER REN #66

#174 ✓

C.S. File No. _____

646-18
C

RENEWAL

Monument Set (Procedure and Description)

Monument Detail

N/A

N/A

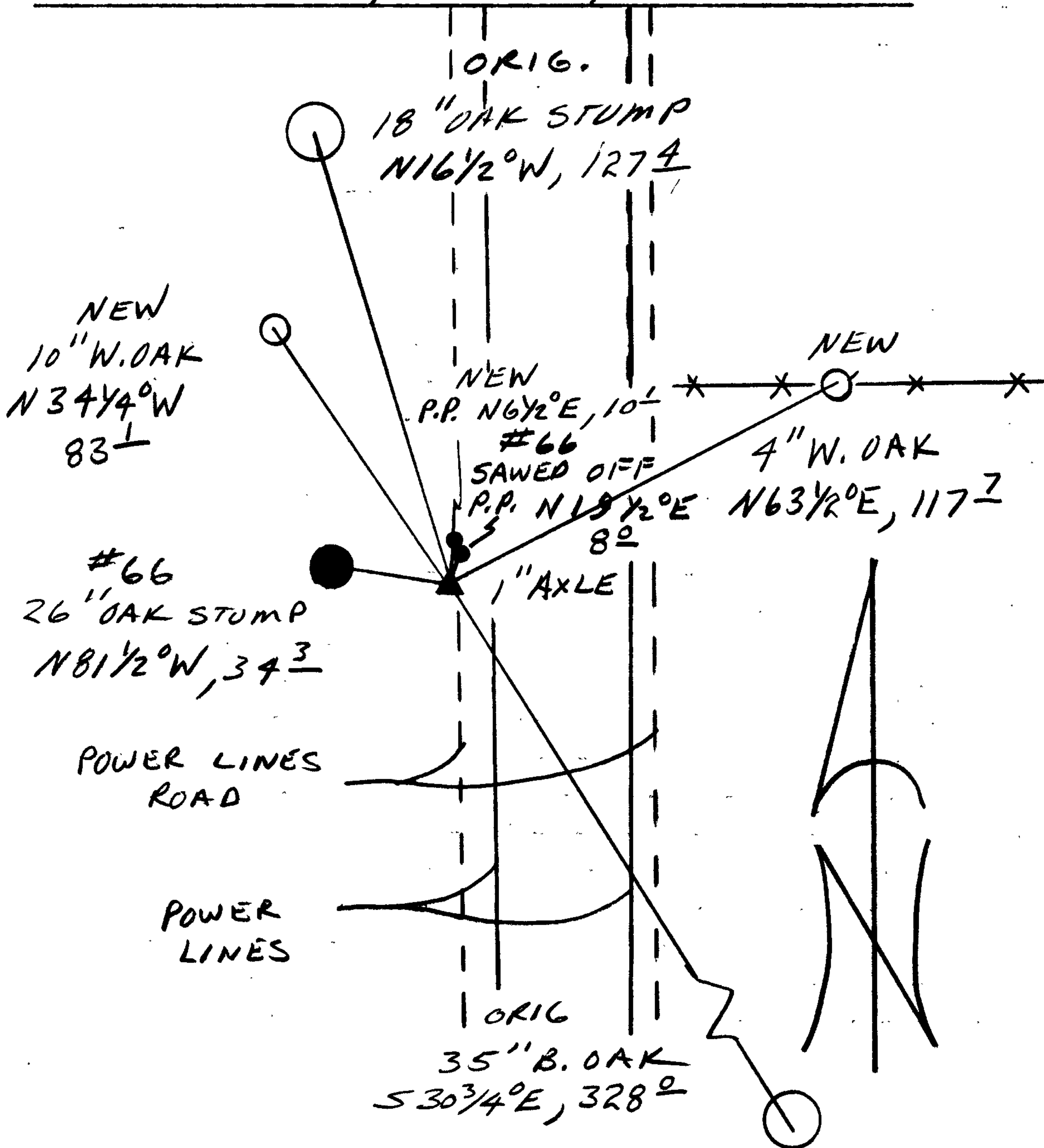
New Accessories

4" DIA W. OAK DOUBLE BLAZED AND SCRIBED "1/4 S 8 CS BT" BEARS N 63 1/2° E, 117.7 FT

10" DIA. W. OAK DOUBLE BLAZED AND SCRIBED "1/4 S 7 CS BT" BEARS N 34 1/4° W, 83.1 FT

WEST POWER POLE TAGGED "PP&L CO 15206" BEARS N 6 1/2° E, 10.1 FT TO CENTER OF POLE

Sketch of Monument, Accessories, and General Area



Location & Comments

CORNER LIES ON A WEST SLOPE ON WEST EDGE OF POWER LINES ROAD. BEARING'S MATCH RECORD AT MONUMENT, A BEARING VARIANCE OF UP TO 4 1/2° IS NOTED WHEN TAKEN FROM BT'S SEE ATTACHED PAPER

Comp. Declin. 18° E
Agency DLSD
Party Chief RANDALL W SMITH
Notekeeper Randall W Smith
Witnesses STEPHEN J FLAUSE

Address

Surveyor's Seal

REGISTERED PROFESSIONAL LAND SURVEYOR

Larry E. Monrean

OREGON JULY 13, 1979 LARRY E. MONREAN #1830

C.S. File No. 6416

BT'S+BO'S	BEARING TAKEN AT I.R.	BEARING TAKEN AT BT'S OR BO'S	RECORD BEARING
35" B.OAK ORIG BT	BT AND I.R. NOT INTERVISIBLE BT LIES OVER CREST OF HILL BEARING IS TAKEN ON LINE. S 32°E		S 30 3/4° E
18" OAK STUMP ORIG BT	N 16 1/2° W	S 20 1/4° E	N 16 1/2° W
26" OAK STUMP REN#66	N 8 1/2° W	S 86° E	N 8 1/2° W
POWER POLE REN#66	N 19 1/2° E	S 17° W	N 19 1/2° E
4" W.OAK NEW	N 63 1/2° W	S 63 1/2° W	
10" W.OAK NEW	N 34 1/4° W	S 37 1/4° E	

FILED *JH*
 MAY 9 1990
 COUNTY SURVEYOR
 DOUGLAS COUNTY, ORE.

C.S. File No. 646