

GOVERNMENT CORNER RESTORATION FORM

Township 27S Range 6W Sec. 10 County DOUGLAS

MAY 2 1990

State OR Date 7/25/90 No. _____

COUNTY SURVEYOR
DOUGLAS COUNTY, ORE.

Corner Designation

1/4
S10/S11

- _____ Condition Report Only
- _____ Not Found
- Renewed
- _____ Unrecorded
- _____ Surveyed In
- _____ Referenced Out

Previous Renewals #139 AND M 37-14

MONUMENT DETAIL

Monument(s) Found: (Condition and Source)

A 2 1/2" DIA. BRASS CAP ON A 1 1/2" O.D. IRON
PIPE PROTRUDING 23" ABOVE GROUND.
IP IS BENT, TOP IS APPROX. 9"
EAST OF PLUMB.

T27S R6W W.M.
1/4 COR.
10 | 11
1969
L.S. 544

Accessories Found:

13" NOW 16" DIA. B. OAK WITH A FULLY HEALED DOUBLE
BLAZE BEARS N27°W, 19.3 FT (REC, N25°03'W 19.3 FT)
REN # 139

13" NOW 14" DIA. W. OAK WITH A FULLY HEALED DOUBLE
BLAZE BEARS N16°E, 80.3 FT (REC N17°05'E, 80.3 FT) REN #139

5/8" I.R. PROTRUDING 7 IN ABOVE GROUND 5" SOUTH OF FENCE LINE
BEARS S 1 1/2° E 79.43 FT (REC S0°4'W 79.29 FT) PER M37-14

#193 ✓

RENEWAL

Monument Set (Procedure and Description)

BC/IP IS REFERENCED AT PLUMB POSITION, BC/IP MEASURES 36 IN. LONG. BC/IP IS STRAIGHTENED AND RETURNED TO REFERENCE POSITION. BC/IP NOW PROTRUDES 7 IN ABOVE GROUND.

Monument Detail

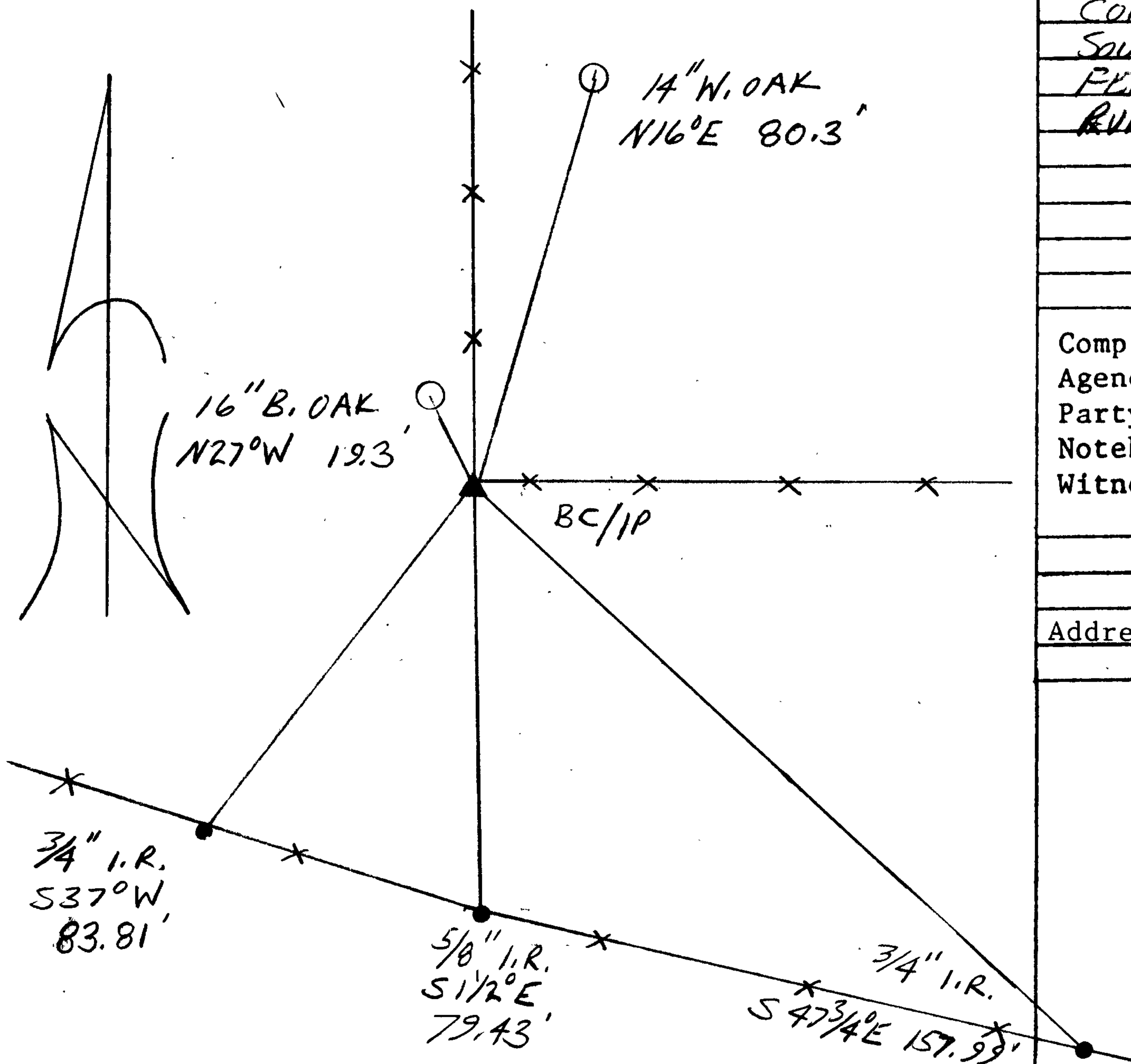
N/A

New Accessories

3/4" I.R. PROTRUDING 4 IN ABOVE GROUND (R/W PIN 8" SOUTH OF FENCE LINE) BEARS S 37° W, 83.81 FT

3/4" I.R. PROTRUDING 3 IN ABOVE GROUND (R/W PIN IN FENCE LINE) BEARS S 47 3/4° E, 157.99 FT

Sketch of Monument, Accessories, and General Area



Location & Comments

CORNER IS 18 IN SOUTH OF A 2WAY FENCE CORNER, FENCES RUN NORTH AND EAST

Comp. Declin. 18° E
Agency DCSO
Party Chief RANDALL W SMITH
Notekeeper Randall W Smith
Witnesses STEPHEN J FLAUSE

Address

Surveyor's Seal

REGISTERED PROFESSIONAL LAND SURVEYOR

Larry E. Monrean

OREGON
JULY 13, 1979
LARRY E. MONREAN
#1830