

GOVERNMENT CORNER RESTORATION FORM

FILED

JK

Township 27 S Range R7W Sec. 4 County DOUGLAS

APR 18 1990

State OREGON Date 4/6/90 No. _____

COUNTY SURVEYOR
DOUGLAS COUNTY, ORE.

Corner Designation

1/4
SS / S4

- Condition Report Only
- Not Found
- Renewed
- Unrecorded
- Surveyed In
- Referenced Out

Previous Renewals #40, #50, #165

Monument(s) Found: (Condition and Source)

A 2 1/2 INCH DIAM. BRASS CAP (STAMPED AS AT RIGHT) ON A 1 3/8 INCH O.D. IRON PIPE FIRMLY SET AND PROTRUDING 7 INCHES ABOVE GROUND. MONUMENT FROM RENEWAL #165

NO EVIDENCE OF ORIGINAL CORNER MONUMENT OR MONUMENTS CALLED FOR IN RENEWALS #40 AND #50 IS FOUND.

COUNTY SURVEYORS OFFICE

T27S R7W

1/4 SS / S4

1970

Accessories Found:

NO EVIDENCE OF REFERENCES TO ORIGINAL CORNER OR REFERENCES FROM RENEWALS #40 AND #50 IS FOUND.

FROM RENEWAL #165 THREE REFERENCES ARE FOUND. A 6" D. FIR NOW A DEAD 14" DBH DOUGLAS FIR WITH A FULLY HEALED DOUBLE BLAZE BEARS S 01° W, 99± FEET DISTANT (AS PER RECORD) THIS TREE WAS CUT DOWN IMMEDIATELY AFTER MEASUREMENT OF G. AND D. WAS MADE, STUMP WILL BE REMOVED IN NEAR FUTURE.

A 4" T, WITH A DEEPLY DEPRESSED CENTER POINT, MARKED HIGH ON NORTH FACE OF AN 8 FT. TALL X 20 X 7 FOOT SOLITARY SANDSTONE ROCK WHICH BEARS S 1/2° E, 179± FEET DISTANT (RECORD SOUTH 179.1 FT).

A 1/2" 5/8" IRON ROD NOW A 5/8 INCH DIAM. IRON ROD FIRMLY SET AND PROTRUDING 6 INCHES ABOVE GROUND BEARS N 50 1/2° E, 35± FEET DISTANT (AS PER RECORD)

NO EVIDENCE OF GARRETS IRON ROD (C.S. 55/138) IS FOUND; THIS AREA HAS BEEN DISTURBED BY GRADING WORK.

#2064

RENEWAL

Monument Set (Procedure and Description)

Monument Detail

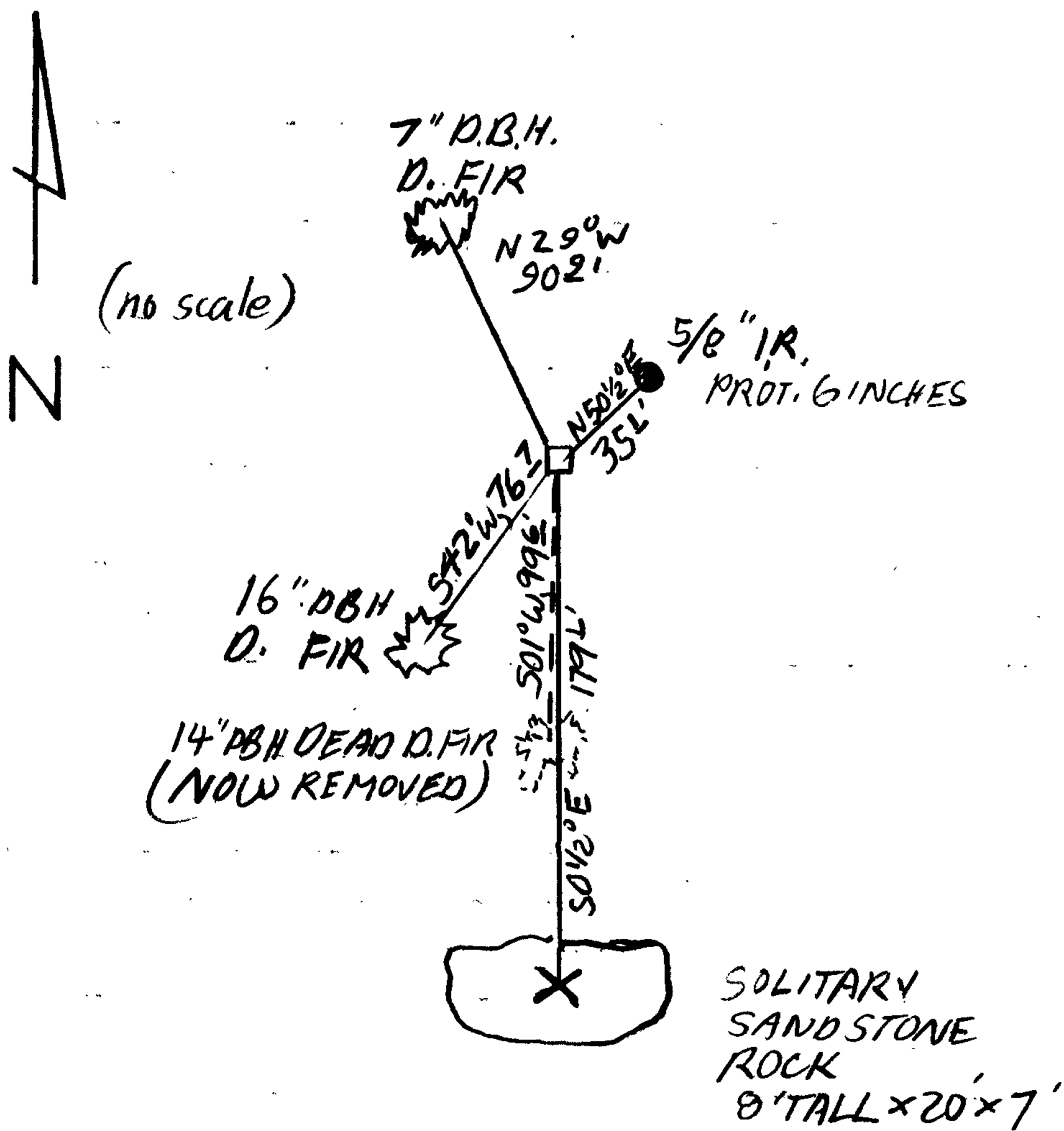
N/A

New Accessories

A 16" D.B.H. DOUGLAS FIR, SCRIBED 1/4 SS CS BT ON A DOUBLE BLAZE, BEARS S42°W, 76' FEET DISTANT.
A 7" D.B.H. DOUGLAS FIR, SCRIBED 1/4 SS CS BT ON A DOUBLE BLAZE, BEARS N29°W, 90' FEET DISTANT.

Sketch of Monument, Accessories, and General Area

Location & Comments



ON SMALL BENCH ON LOWER SLOPE OF THE EAST FACE OF THE CALLAHAN RIDGE.

Comp. Declin. 18° EAST
Agency DCSO
Party Chief S. J. FLAISE
Notekeeper T. FRANSSSEN
Witnesses Stephen John Flaise

Address

Surveyor's Seal
REGISTERED
PROFESSIONAL
LAND SURVEYOR

Signature of Larry E. Monrean

OREGON
JULY 13, 1979
LARRY E. MONREAN
#1830